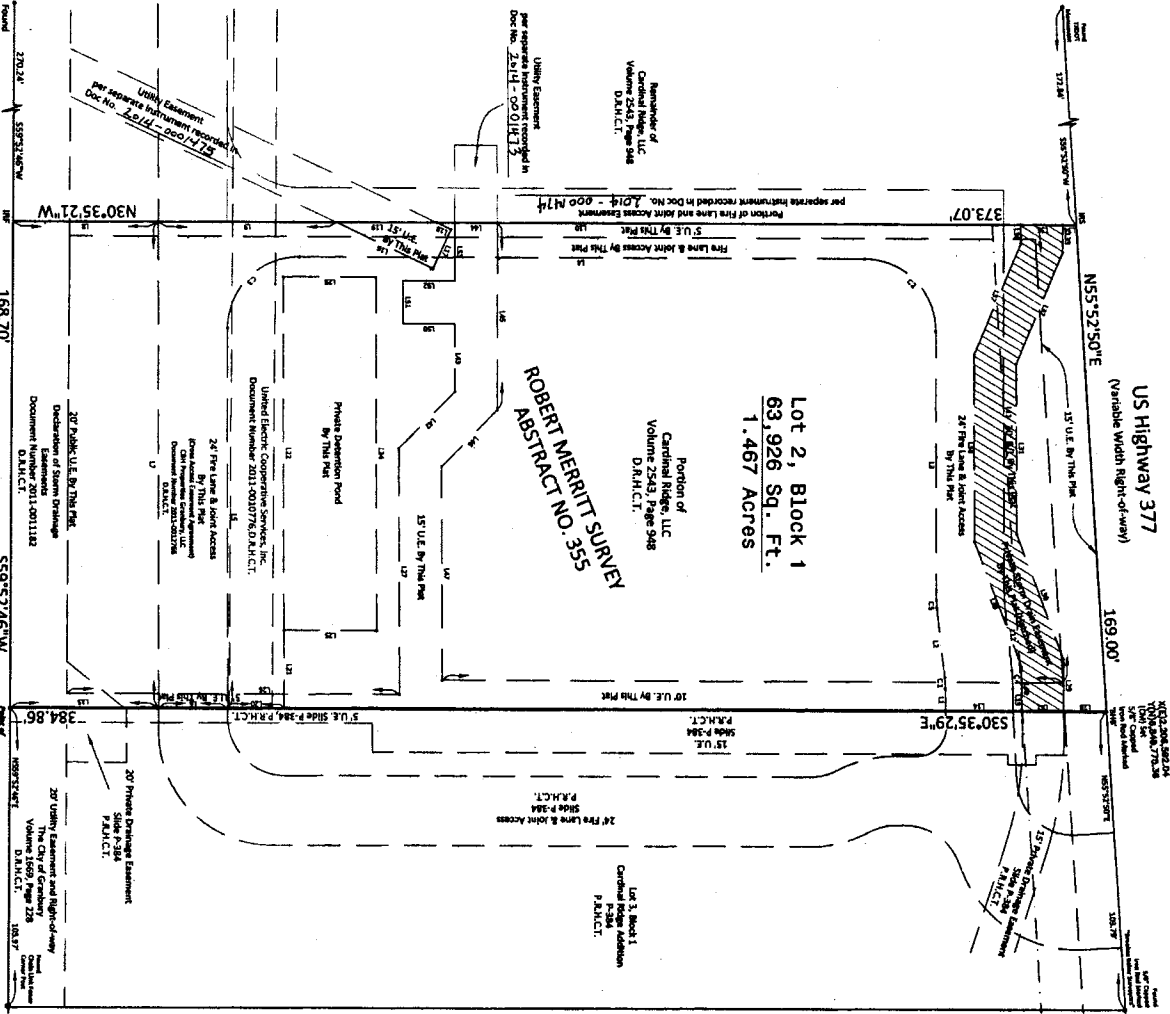


**LEGEND**  
 (C.M.)...Controlling Monument  
 D.M.H.C.T....Deed Record Hood County, Texas  
 P.M.H.C.T....Plat Record Hood County, Texas  
 U.E.....Utility Easement



20' Public U.E. By This Plat  
 Declaration of Steam Drainage  
 Easements  
 Document No. 2011-0011182  
 D.A.H.C.T.

20' Private Drainage Easement  
 Slide P-384  
 P.M.H.C.T.

20' Utility Easement and Right-of-Way  
 The City of Garbary  
 Volume 1669, Page 226  
 D.M.H.C.T.

Number	Order	Bearing	Dist.	Point	Order	Bearing	Dist.	Point
1	1	S 89° 52' 29" E	169.00'	1	1	S 89° 52' 29" E	169.00'	1
2	2	N 55° 52' 50" E	169.00'	2	2	N 55° 52' 50" E	169.00'	2
3	3	S 30° 35' 22" W	384.86'	3	3	S 30° 35' 22" W	384.86'	3
4	4	N 30° 35' 22" W	168.70'	4	4	N 30° 35' 22" W	168.70'	4
5	5	S 59° 52' 46" W	168.70'	5	5	S 59° 52' 46" W	168.70'	5
6	6	S 59° 52' 46" W	168.70'	6	6	S 59° 52' 46" W	168.70'	6
7	7	S 59° 52' 46" W	168.70'	7	7	S 59° 52' 46" W	168.70'	7
8	8	S 59° 52' 46" W	168.70'	8	8	S 59° 52' 46" W	168.70'	8
9	9	S 59° 52' 46" W	168.70'	9	9	S 59° 52' 46" W	168.70'	9
10	10	S 59° 52' 46" W	168.70'	10	10	S 59° 52' 46" W	168.70'	10
11	11	S 59° 52' 46" W	168.70'	11	11	S 59° 52' 46" W	168.70'	11
12	12	S 59° 52' 46" W	168.70'	12	12	S 59° 52' 46" W	168.70'	12
13	13	S 59° 52' 46" W	168.70'	13	13	S 59° 52' 46" W	168.70'	13
14	14	S 59° 52' 46" W	168.70'	14	14	S 59° 52' 46" W	168.70'	14
15	15	S 59° 52' 46" W	168.70'	15	15	S 59° 52' 46" W	168.70'	15
16	16	S 59° 52' 46" W	168.70'	16	16	S 59° 52' 46" W	168.70'	16
17	17	S 59° 52' 46" W	168.70'	17	17	S 59° 52' 46" W	168.70'	17
18	18	S 59° 52' 46" W	168.70'	18	18	S 59° 52' 46" W	168.70'	18
19	19	S 59° 52' 46" W	168.70'	19	19	S 59° 52' 46" W	168.70'	19
20	20	S 59° 52' 46" W	168.70'	20	20	S 59° 52' 46" W	168.70'	20
21	21	S 59° 52' 46" W	168.70'	21	21	S 59° 52' 46" W	168.70'	21
22	22	S 59° 52' 46" W	168.70'	22	22	S 59° 52' 46" W	168.70'	22
23	23	S 59° 52' 46" W	168.70'	23	23	S 59° 52' 46" W	168.70'	23
24	24	S 59° 52' 46" W	168.70'	24	24	S 59° 52' 46" W	168.70'	24
25	25	S 59° 52' 46" W	168.70'	25	25	S 59° 52' 46" W	168.70'	25
26	26	S 59° 52' 46" W	168.70'	26	26	S 59° 52' 46" W	168.70'	26
27	27	S 59° 52' 46" W	168.70'	27	27	S 59° 52' 46" W	168.70'	27
28	28	S 59° 52' 46" W	168.70'	28	28	S 59° 52' 46" W	168.70'	28
29	29	S 59° 52' 46" W	168.70'	29	29	S 59° 52' 46" W	168.70'	29
30	30	S 59° 52' 46" W	168.70'	30	30	S 59° 52' 46" W	168.70'	30

**FINAL PLAT**  
**LOT 2, BLOCK 1**  
**CARDINAL RIDGE ADDITION**  
 BEING A 1.467 ACRE TRACT OF LAND IN THE  
 ROBERT MERRITT SURVEY  
 ABSTRACT NO. 355  
 CITY OF GARBARY, HOOD COUNTY, TEXAS  
 FEBRUARY 2014  
 Sheet 2 of 2

**BBB** Baird, Hampton & Brown, Inc.  
 Engineering & Surveying  
 600 North Loop, S.W., 7th Floor, P.O. Box 117115, Houston, Texas 77211-1171  
 Phone: (713) 861-1171  
 Fax: (713) 861-1171  
 www.bhb.com

HOOD COUNTY FILING  
 Filed this 21st day of February 2014 in Slide P-471  
 of the Plat Records of Hood County, Texas.