

LOT 4, BLOCK 1
 LOTS 4, ADDITION
 SLIDE C-1, PHASE 1

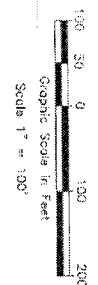
HILL BOULEVARD

LOT 4, BLOCK 1
 LOTS 4, ADDITION
 SLIDE C-1, PHASE 1

REMANUFR FRAC
 LOT 4, ADDITION
 SLIDE C-1, PHASE 1

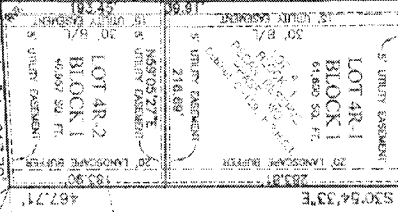
REMANUFR FRAC
 LOT 4, ADDITION
 SLIDE C-1, PHASE 1

REMANUFR FRAC
 LOT 4, ADDITION
 SLIDE C-1, PHASE 1



REMANUFR OF
 JOSEPH STEWES, LTD.
 VOLUME 209, PAGE 696,
 D.P.H.C.T.

NS901237E 217.94'



JOSEPH STEWES,
 PHASE ONE
 SLIDE C-128
 P.H.C.T.

SOLE PURPOSE OF THIS REPLAT IS TO SUBDIVIDE LOT 4, BLOCK 1 INTO LOTS 4R-1 AND 4R-2, IT DOES NOT ATTEMPT TO AMEND OR REMOVE ANY FILED COVENANTS OR RESTRICTIONS.

REPLAT
LOTS 4R-1 & 4R-2, BLOCK 1
PECAN RESERVE

PHASE TWO
 BEING A REPLAT OF LOT 4, BLOCK 1, PECAN RESERVE, PHASE TWO
 AS RECORDED IN SLIDE C-119
 CITY OF GRANBURY, HOOB COUNTY, TEXAS
 MAY 20, 2013
 SHEET 2 OF 2

OWNERS:
 Pecan Reserve Land Company, L.P.
 1315 Walnut Edge Drive, Suite 118
 Granbury, Texas 75048

ENGINEERS:
BBB Boird, Hampton & Brown, Inc.
 Engineering & Surveying
 502 Royal Oak, Ste. 101, P.O. Box 13, 810 West 23rd Street, Fort Worth, Texas 76102