

PC B614

FILED AND RECORDED
 OFFICIAL PUBLIC RECORDS
 On Jul 27, 2001 at 08:56A

Document Number: 00421860

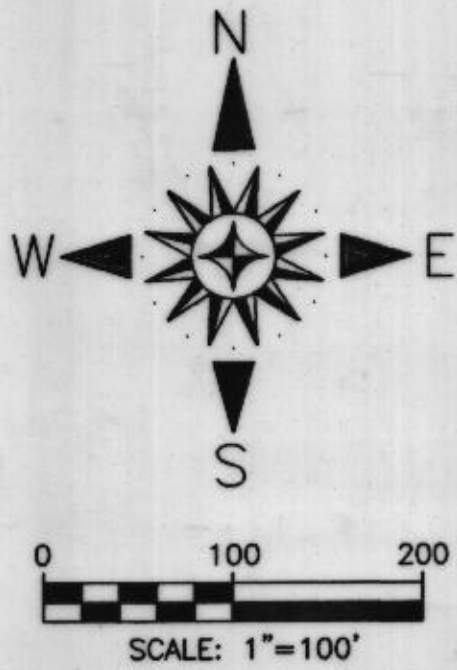
Amount: .00

By
 Melissa Rutledge

STATE OF TEXAS COUNTY OF PARKER
 I hereby certify that this instrument was
 filed on the date and time stamped hereon by me
 and was duly recorded in the volume and page
 of the named records of Parker County
 as stamped hereon by me.

Jul 27, 2001

Jeanne Brunson, County Clerk
 Parker County



J. B. L. HANCOCK
 VOL. 1789, PG. 328

A. HAWKINS SURVEY
 ABSTRACT NO. 665

N. L. F. McCOY
 VOL. 1141, PG. 471

JOHN GARY TEAGUE
 VOL. 1798, PG. 1336

P.B. PIPKIN SURVEY
 ABSTRACT NO. 1073

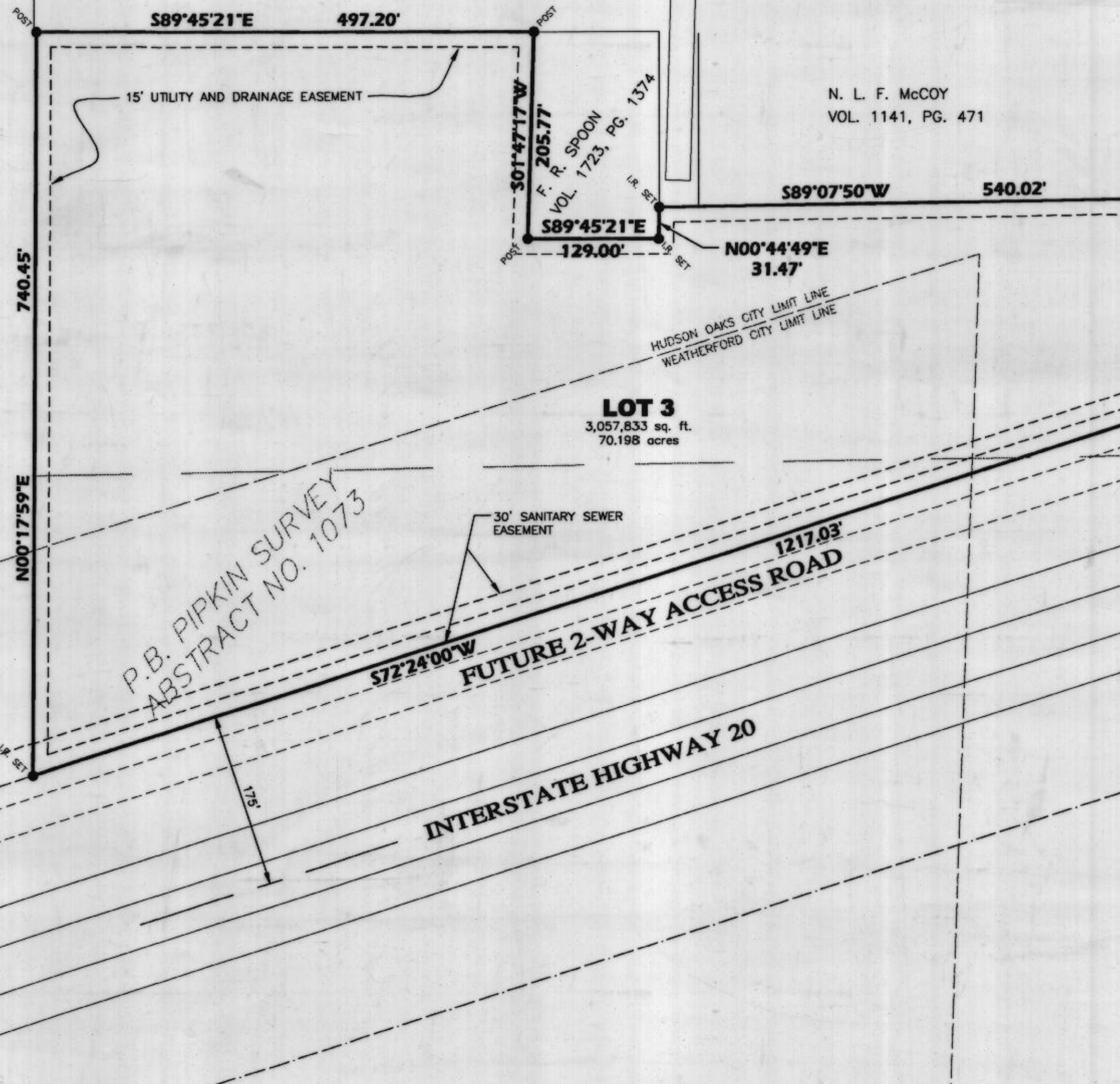
LOT 3
 3,057,833 sq. ft.
 70.198 acres

30' SANITARY SEWER
 EASEMENT

INTERSTATE HIGHWAY 20

FUTURE 2-WAY ACCESS ROAD

HUDSON OAKS CITY LIMIT LINE
 WEATHERFORD CITY LIMIT LINE



PC B614

FINAL PLAT
 OF
**A. B. CINEMA
 DEVELOPMENT**
 C. J. EDDLEMAN SURVEY - 439
 EMMETT ALEXANDER SURVEY - 1923
 B.L. BLEDSOE SURVEY - 2688
 ADDISON HAWKINS SURVEY - 665
 P.B. PIPKIN SURVEY - 1073
 CITY OF HUDSON OAKS, TEXAS
 PARKER COUNTY, TEXAS
 MARCH 16, 2001 SHEET 1 OF 4

OWNER:
 ROBERT BEALL
 BEALL INDUSTRIES, INC.
 2725 PREMIER STREET
 FORT WORTH, TX 76111
 (817) 831-3181

**BARNETT
 ENGINEERING INC.**
CONSULTING ENGINEERS • PLANNERS • SURVEYORS
 P.O. BOX 2230
 WEATHERFORD, TX 78086
 (817) 599-4276
 (817) 341-4242 METRO
 (817) 599-4279 FAX
 www.barnettengineering.com