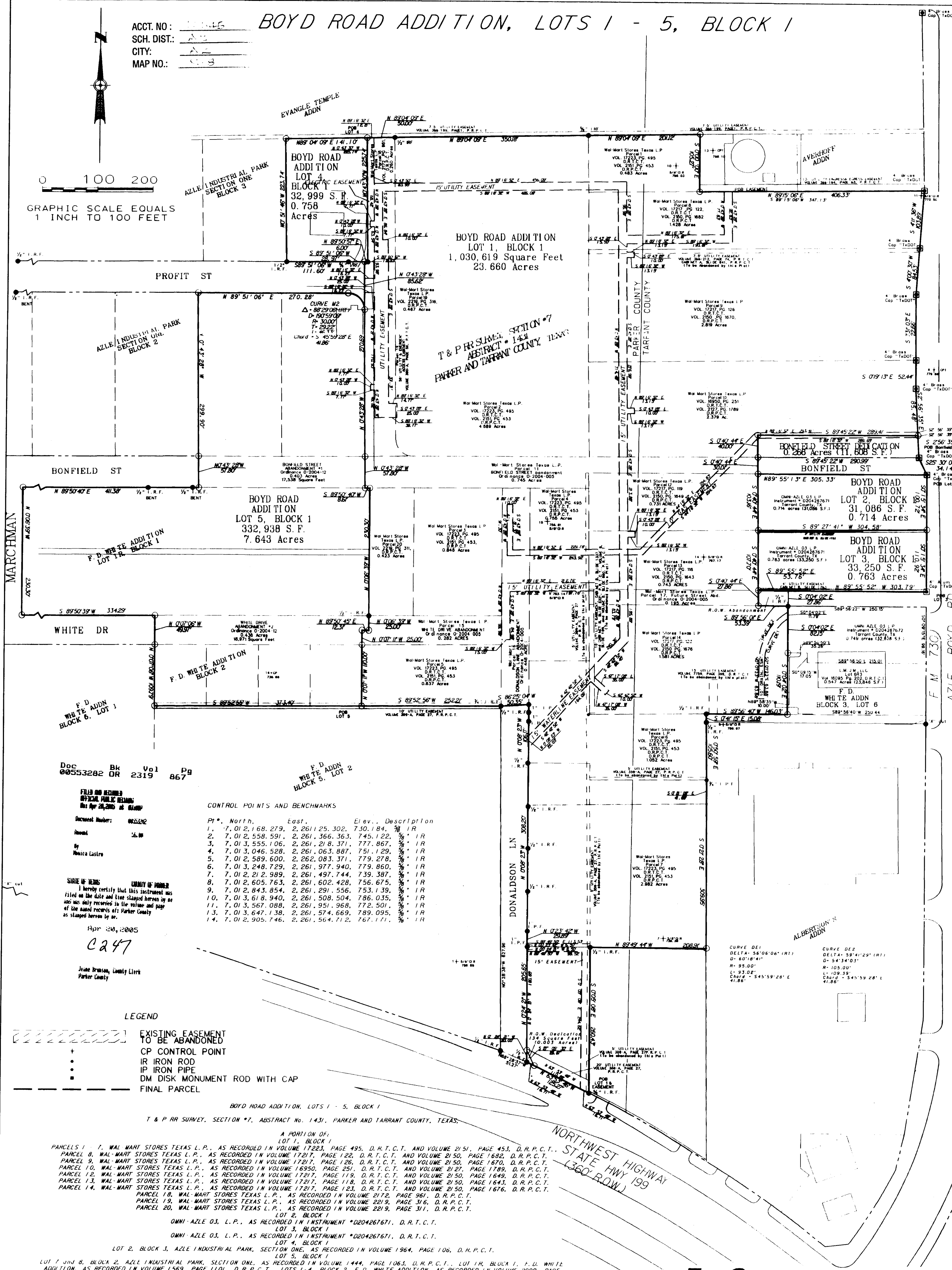


ACCT. NO.: 111111
 SCH. DIST.: A-2
 CITY: A-2
 MAP NO.: 1111

BOYD ROAD ADDITION, LOTS 1 - 5, BLOCK 1



0 100 200
 GRAPHIC SCALE EQUALS
 1 INCH TO 100 FEET



BOYD ROAD ADDITION
 LOT 1, BLOCK 1
 1,030,619 Square Feet
 23.660 Acres

BOYD ROAD ADDITION
 LOT 5, BLOCK 1
 332,938 S.F.
 7.643 Acres

BONFIELD STREET DEDICATION
 0.268 Acres (11,608 S.F.)
 BONFIELD ST

BOYD ROAD ADDITION
 LOT 2, BLOCK 1
 31,086 S.F.
 0.714 Acres

BOYD ROAD ADDITION
 LOT 3, BLOCK 1
 33,250 S.F.
 0.763 Acres

F.D. WHITE ADDN
 BLOCK 3, LOT 6
 589'56.40" W 230'44"

Doc 00553282 Bk OR Vol 2319 Pg 867

FILED AND RECORDED
 OFFICIAL PUBLIC RECORDS
 This Apr 24, 2005 at 8:00AM

Document Number: 00553282
 Amount: \$6.00
 By: Monica Lashro

SIGNATURE OF DRAWER
 I hereby certify that this instrument was
 filed on the date and time stamped herein by me
 and was duly recorded in the volume and page
 of the record books of Tarrant County
 as stamped herein by me.

Apr 24, 2005
 C247

Jeanne Brunson, County Clerk
 Tarrant County

CONTROL POINTS AND BENCHMARKS

Pt. #	North	East	Elev.	Description
1	7,012,168.279	2,261,253.302	730.184	3/8" IR
2	7,012,558.591	2,261,366.363	745.122	3/8" IR
3	7,013,555.106	2,261,218.371	777.867	3/8" IR
4	7,013,046.528	2,261,063.887	751.129	3/8" IR
5	7,012,589.600	2,262,083.371	779.278	3/8" IR
6	7,013,248.729	2,261,977.940	779.860	3/8" IR
7	7,012,212.989	2,261,497.744	739.387	3/8" IR
8	7,012,605.763	2,261,602.428	756.675	3/8" IR
9	7,012,843.854	2,261,291.556	753.139	3/8" IR
10	7,013,618.940	2,261,508.504	786.035	3/8" IR
11	7,013,567.088	2,261,951.968	772.501	3/8" IR
13	7,013,647.138	2,261,574.669	789.095	3/8" IR
14	7,012,905.746	2,261,564.712	767.111	3/8" IR

LEGEND

- EXISTING EASEMENT TO BE ABANDONED
- CP CONTROL POINT
- IR IRON ROD
- IP IRON PIPE
- DM DISK MONUMENT ROD WITH CAP
- FINAL PARCEL

BOYD ROAD ADDITION, LOTS 1 - 5, BLOCK 1

T & P RR SURVEY, SECTION #7, ABSTRACT No. 1431, PARKER AND TARRANT COUNTY, TEXAS.

A PORTION OF:
 LOT 1, BLOCK 1
 PARCEL 1, WAL-MART STORES TEXAS L.P., AS RECORDED IN VOLUME 17223, PAGE 495, D.R.T.C.T. AND VOLUME 2151, PAGE 453, D.R.P.C.T.
 PARCEL 8, WAL-MART STORES TEXAS L.P., AS RECORDED IN VOLUME 17217, PAGE 126, D.R.T.C.T. AND VOLUME 2150, PAGE 1682, D.R.P.C.T.
 PARCEL 9, WAL-MART STORES TEXAS L.P., AS RECORDED IN VOLUME 17217, PAGE 126, D.R.T.C.T. AND VOLUME 2150, PAGE 1670, D.R.P.C.T.
 PARCEL 10, WAL-MART STORES TEXAS L.P., AS RECORDED IN VOLUME 16950, PAGE 251, D.R.T.C.T. AND VOLUME 2127, PAGE 1789, D.R.P.C.T.
 PARCEL 12, WAL-MART STORES TEXAS L.P., AS RECORDED IN VOLUME 17217, PAGE 119, D.R.T.C.T. AND VOLUME 2150, PAGE 1649, D.R.P.C.T.
 PARCEL 13, WAL-MART STORES TEXAS L.P., AS RECORDED IN VOLUME 17217, PAGE 118, D.R.T.C.T. AND VOLUME 2150, PAGE 1643, D.R.P.C.T.
 PARCEL 14, WAL-MART STORES TEXAS L.P., AS RECORDED IN VOLUME 17217, PAGE 123, D.R.T.C.T. AND VOLUME 2150, PAGE 1676, D.R.P.C.T.
 PARCEL 18, WAL-MART STORES TEXAS L.P., AS RECORDED IN VOLUME 2172, PAGE 961, D.R.P.C.T.
 PARCEL 19, WAL-MART STORES TEXAS L.P., AS RECORDED IN VOLUME 2219, PAGE 316, D.R.P.C.T.
 PARCEL 20, WAL-MART STORES TEXAS L.P., AS RECORDED IN VOLUME 2219, PAGE 311, D.R.P.C.T.

LOT 2, BLOCK 1, OMNI-AZLE O3, L.P., AS RECORDED IN INSTRUMENT #D204267671, D.R.T.C.T.
 LOT 3, BLOCK 1, OMNI-AZLE O3, L.P., AS RECORDED IN INSTRUMENT #D204267671, D.R.T.C.T.
 LOT 4, BLOCK 1, AZLE INDUSTRIAL PARK, SECTION ONE, AS RECORDED IN VOLUME 1964, PAGE 106, D.H.P.C.T.
 LOT 5, BLOCK 1, AZLE INDUSTRIAL PARK, SECTION ONE, AS RECORDED IN VOLUME 1444, PAGE 1063, D.R.P.C.T.
 LOT 1R, BLOCK 1, F.D. WHITE ADDITION, AS RECORDED IN VOLUME 1569, PAGE 1101, D.R.P.C.T.
 LOTS 1-A, BLOCK 2, F.D. WHITE ADDITION, AS RECORDED IN VOLUME 2000, PAGE 704, D.R.P.C.T.

THIS PLAT FILED IN CABINET... SLIDE NO. 7111... P.H.T.C.T., DATED: 4/24/05