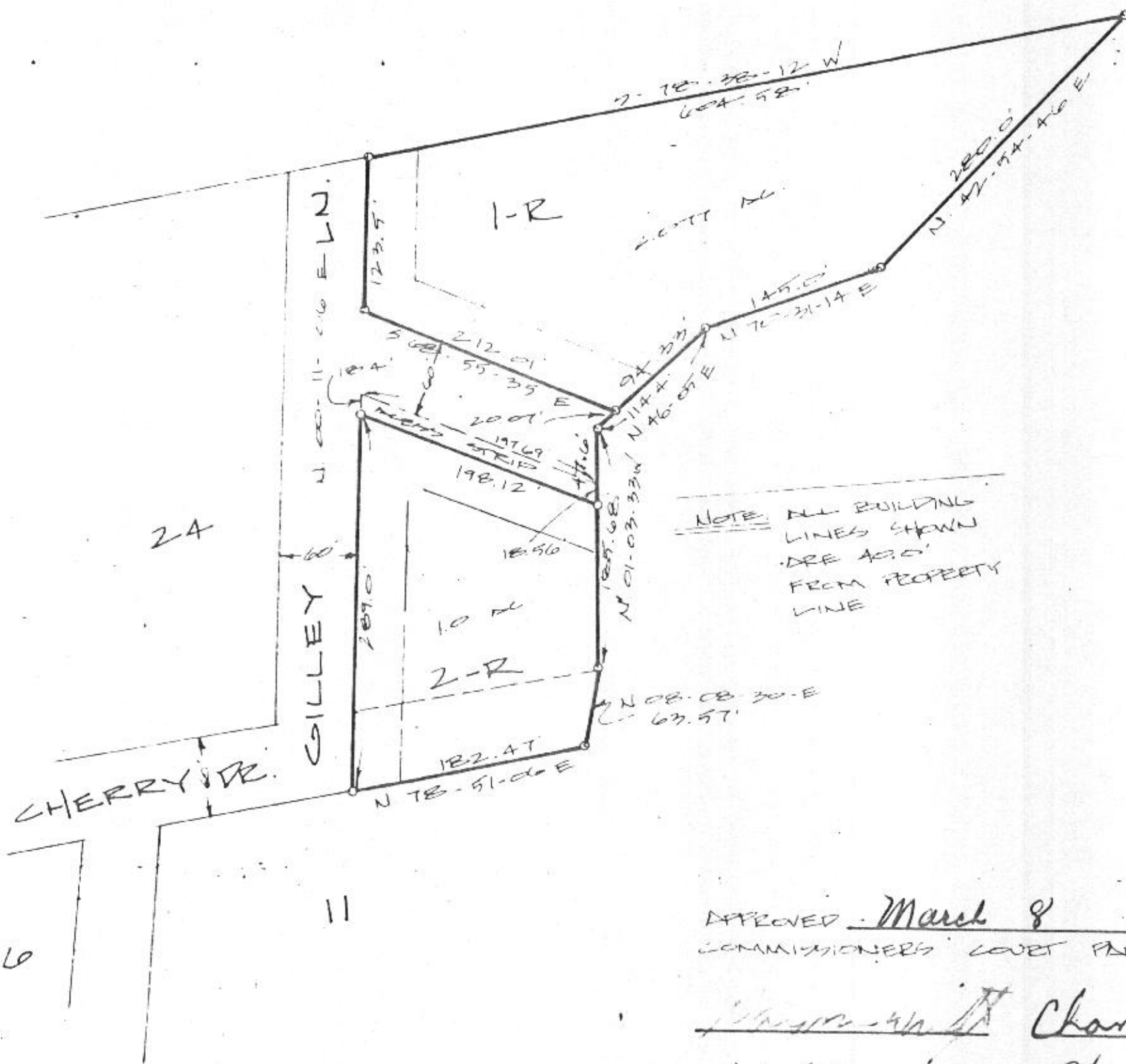


A 354



SCALE - 1" = 100'
DATE - 10-4-82

APPROVED March 8 1982
COMMISSIONERS' COURT PARKER CO TEXAS

Wendell Hancock Chandler Sanders
Joe Miller Harold Anderson

Frank W. Burdick
COUNTY CLERK

PLAT SHOWING

LOTS 1-R, 2-R, 2-A
CHERRY VALLEY FARMS AND AN ADDITION
TO THE S. WILCOX C. L.
E-1245, PARKER COUNTY TEXAS
BEING A REVISION OF LOTS 1-R,
2-R & CHERRY VALLEY FARMS

WENDELL HANCOCK
REGISTERED PUBLIC SURVEYOR #1326
107 HAZEN RD. "B" 111
FT. WORTH TEXAS 854-6247



50478

RECEIVED AND FILED
FOR RECORD
AT 3:30 O'Clock P.M.
JUN - 9 1982

CARRIE REED, CLK. Clerk
PARKER COUNTY, TEXAS
By [Signature] Deputy
10-82

Bk 362A Page 3

STATE OF TEXAS COUNTY OF PARKER
I hereby certify that this instrument was filed
on 6-9-82 at 3:30 P.M. Pursuant to the said
instrument, as in and to the contents of the
same recorded in the public records of this
county on 6-9-82.

RECORDED JUN 09 1982



Carrie Reed
County Clerk, Parker County, Tex.