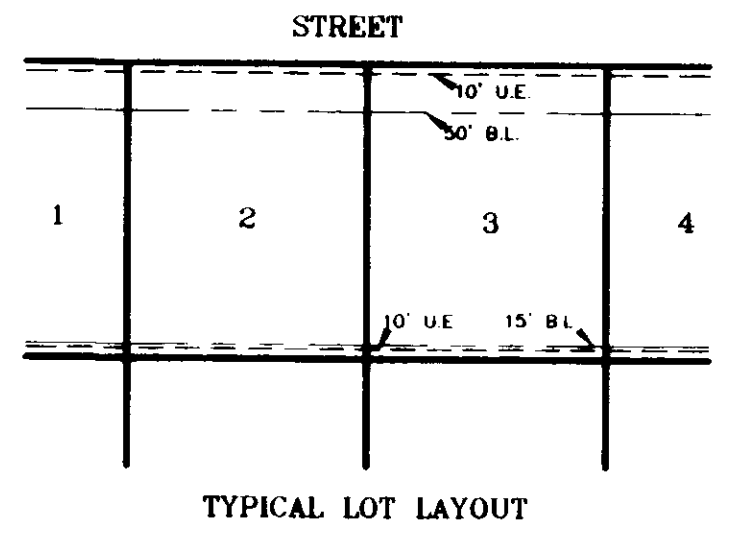
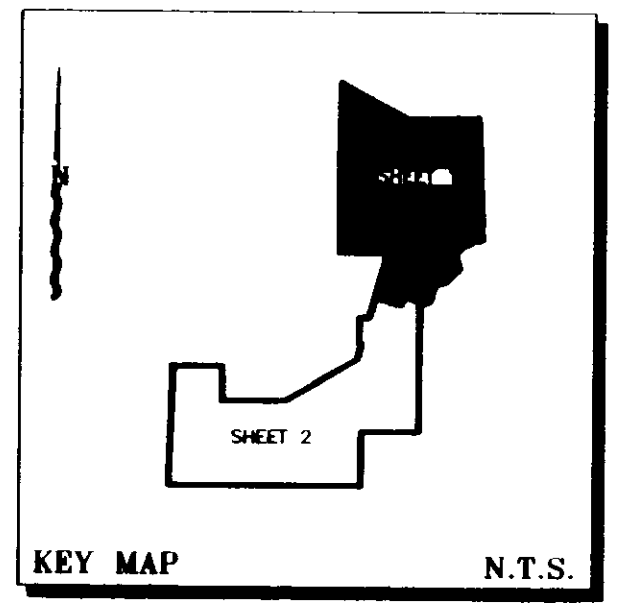
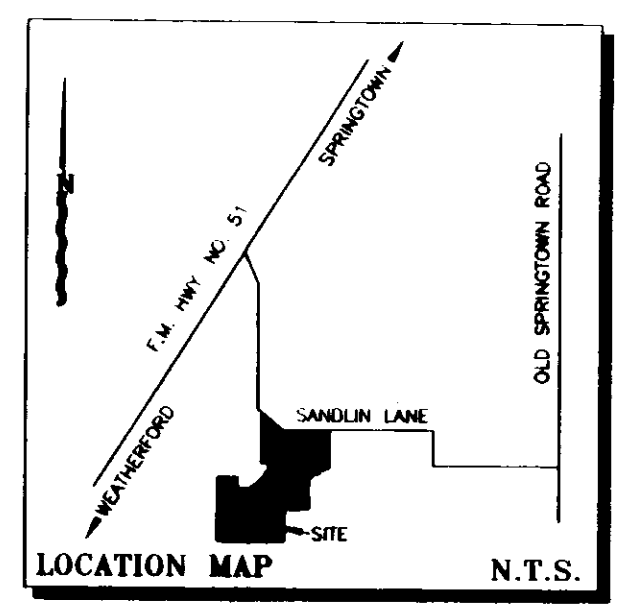


FILED AND RETURNED  
 OFFICIAL PUBLIC RECORDS  
 On Jan 26, 2005 at 10:29  
 Document Number: 0654145  
 Amount: \$6.00  
 By  
 Judy Green

STATE OF TEXAS COUNTY OF PARKER  
 I hereby certify that this instrument was  
 filed on the date and time stamped hereon by me  
 and was duly recorded in the volume and page  
 of the named records of Parker County  
 as stamped hereon by me.

Jan 26, 2005

JUDIE BRUNSON, COUNTY CLERK  
 PARKER COUNTY



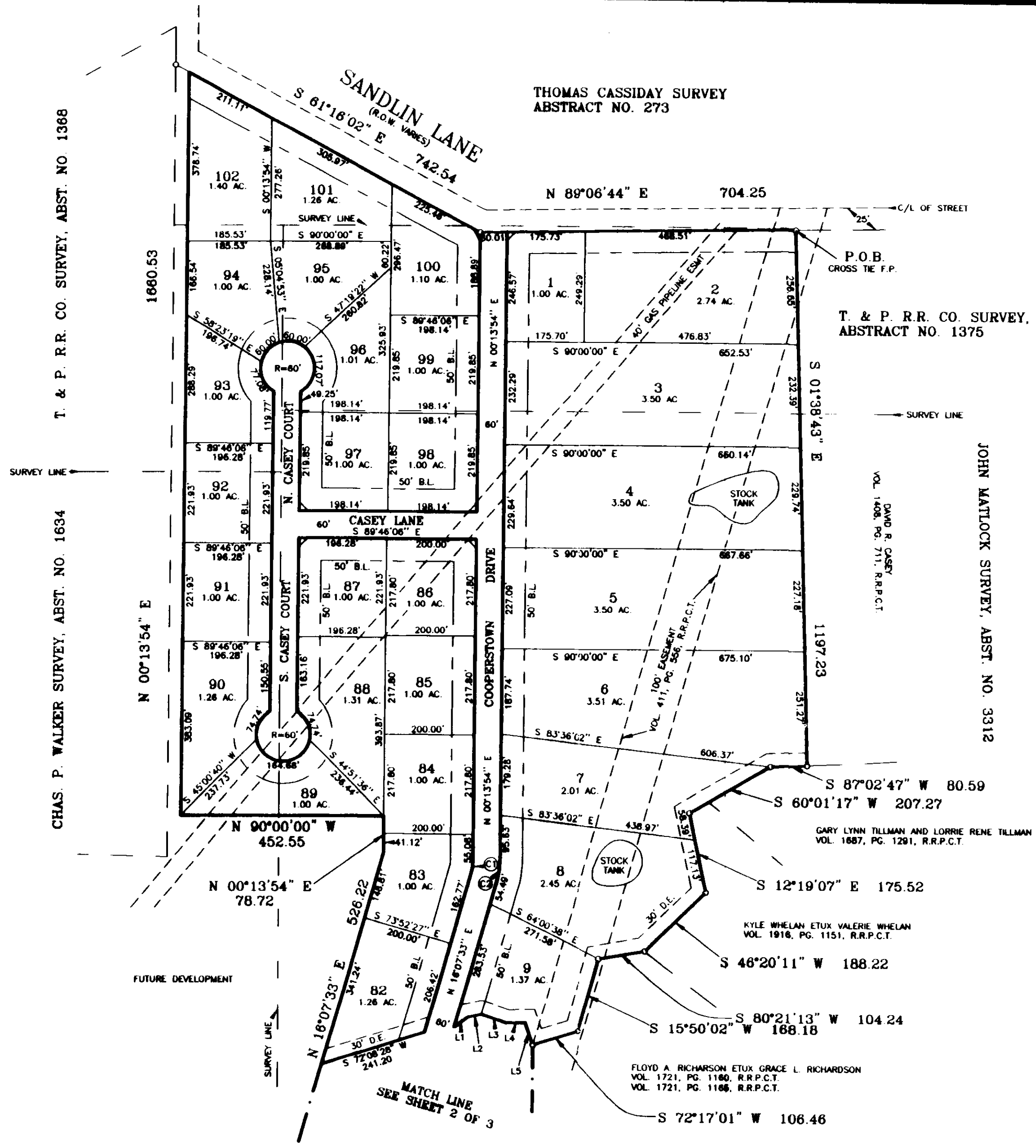
ACCT. NO: 11433  
 SCH. DIST: 3P  
 CITY: 20  
 MAP NO. 2-7

FINAL PLAT

SHOWING  
 LOTS 1 THRU 42  
 LOTS 80 THRU 102  
 COOPERSTOWN  
 PHASE ONE

BEING 110.85 ACRES OF LAND OUT OF  
 THE T&P R.R. CO. SURVEY, ABST. NO. 1375,  
 THE T&P R.R. CO. SURVEY, ABST. NO. 1385,  
 THE CHAS. P. WALKER SURVEY, ABST. NO.  
 1634, THE THOMAS CASSIDAY SURVEY,  
 ABST. NO. 273, AND THE JOHN MATLOCK SURVEY,  
 ABST. NO. 901, PARKER COUNTY, TEXAS.

THOMAS CASSIDAY SURVEY  
 ABSTRACT NO. 273



CURVE TABLE

CURVE	DELTA	CH. BEARING	CH. LENGTH	ARC LENGTH
1	15°53'39"	N 08°10'43" E	27.65	27.74
2	15°53'39"	N 08°10'43" E	44.24	44.38
3	43°09'04"	N 37°42'05" E	73.55	75.31
4	43°09'04"	N 37°42'05" E	117.67	120.50
5	30°43'07"	N 74°38'10" E	52.97	53.61
6	30°43'07"	N 74°38'10" E	84.76	85.78

LINE TABLE

LINE	BEARING	DISTANCE
1	N 54°43'52" E	39.01
2	N 78°18'13" E	29.38
3	S 70°53'41" E	59.31
4	N 88°58'41" E	41.85
5	S 18°37'25" E	53.46

APPROVED BY THE COMMISSIONERS COURT OF PARKER COUNTY, TEXAS

This the 26th day of January, 2005.

*absent*  
 Parker County Judge

*Shobe*  
 Commissioner

*Gene B... Jim Webster*  
 Commissioner

Clerk, County Court  
 Parker County, Texas

I, DOUG BURT REGISTERED PROFESSIONAL LAND SURVEYOR, DO HEREBY CERTIFY THAT THIS PLAT IS A TRUE AND ACCURATE REPRESENTATION OF THIS SURVEY AS MADE ON THE GROUND.

*Doug Burt*  
 21/JANUARY/2005



DKB &  
 ASSOCIATES, LLC  
 1250 E. HWY. NO. 199  
 SPRINGTOWN, TEXAS, 76082  
 220-5888 FAX: 220-2878