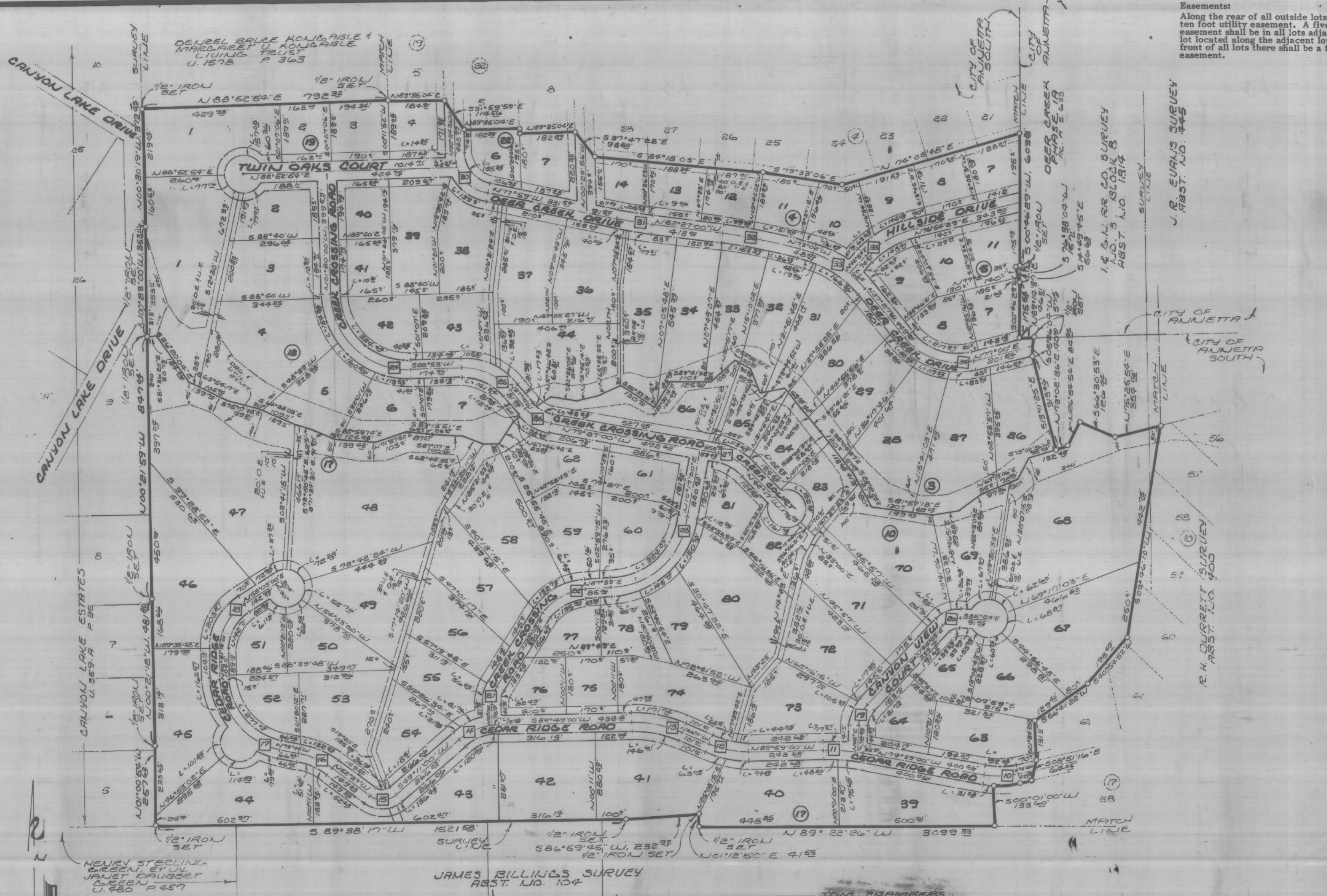
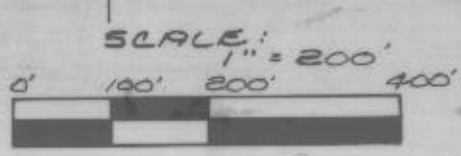


Easements:  
 Along the rear of all outside lots there shall be a ten foot utility easement. A five foot utility easement shall be in all lots adjacent to another lot located along the adjacent lot line. Along the front of all lots there shall be a five foot utility easement.



Final Plat  
 Blocks 2-6; 10; and 14-23  
**DEER CREEK PHASE VII**  
 City of Annetta South  
 Parker County, Texas

MAY 13 1986  
 Tom Chambers  
 County Clerk, Parker County, TX



**MIZELL LAND SURVEYING, INC.**  
 513 North Highway 1187  
 Aledo, Texas 76008  
 (817) 441-6199 (817) 598-1284