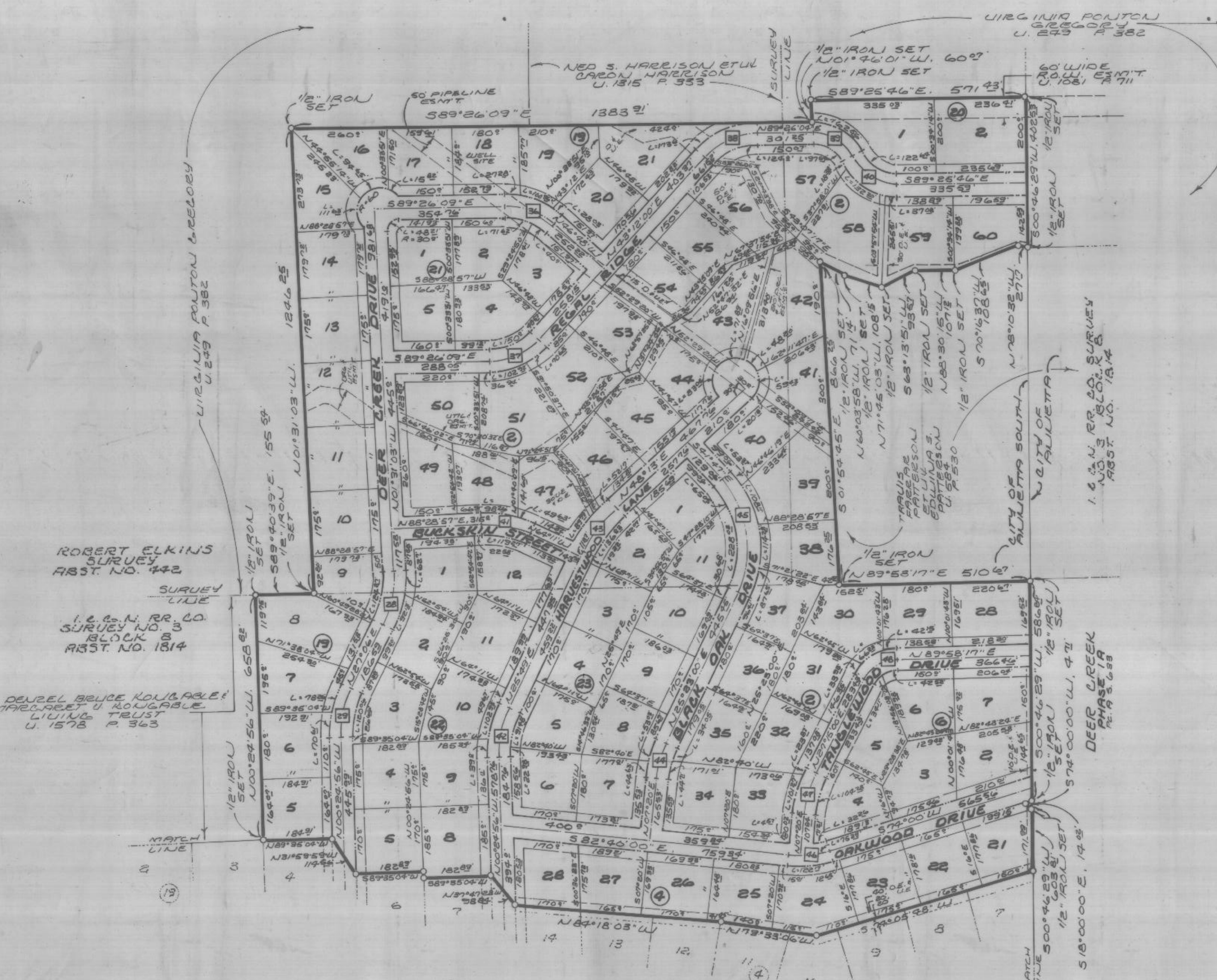


Notes:

1. All street frontage building lines are twenty-five (25) feet, unless otherwise shown.
2. There will exist along all side and interior rear lot lines seven and a half (7 1/2) foot wide utility easements; These utility easements will also exist along lot lines which have drainage easements.
3. There will exist along the rear of all exterior lot lines a ten (10) foot wide utility easement.
4. There will exist along the front of all of all lots a seven and a half (7 1/2) foot wide utility easement.
5. No buildings, fences or other improvements shall be constructed, placed upon, over or across the drainage easements, as shown.



ROBERT ELKINS SURVEY
ABST. NO. 442

I. C. O. N. RR. CO.
SURVEY NO. 3
BLOCK 8
ABST. NO. 1814

DEZEL BRUCE KOUZABAL
MARILYNE W. KOUZABAL
LIVING TRUST
U. 1578 P. 363

VIRGINIA PONTON
SURVEY
U. 249 P. 382

NED S. HARRISON ET AL
CARDN. HARRISON
U. 1515 P. 353

1/2" IRON SET
N01°46'01"W, 60°2'
1/2" IRON SET

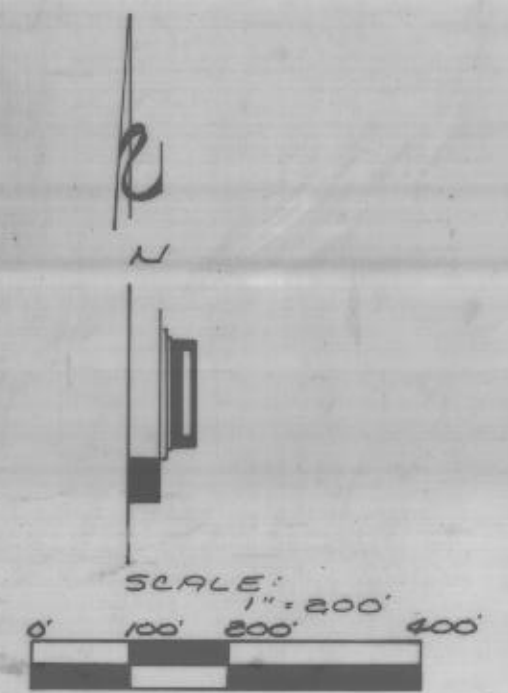
60' WIDE
R.O. U.I. E.S.M.T.
U. 1081 P. 711

CITY OF ANNETTA SOUTH
CITY OF ANNETTA

I. C. O. N. RR. CO. SURVEY
NO. 3 BLOCK 8
ABST. NO. 1814

DEER CREEK
PHASE I A
P. 2, 5, 6, 9

STATE OF TEXAS COUNTY OF PARKER
I hereby certify that this instrument was filed
on the date and time stamped hereon by me and
was duly recorded in the volume and page of the
indexed records of Parker County as stamped here-
on by me.
RECORDED DEC 06 1996
SEAL
Jeanne Spurgeon
County Clerk, Parker County, Tex.



MIZELL LAND SURVEYING, INC.
513 North Highway 1187
Aledo, Texas 76008
(817) 441-6199 (817) 598-1284

Final Plat
Blocks 2-6; 10; and 14-23
DEER CREEK PHASE VII
City of Annetta South
Parker County, Texas

PAB 180