

141901
PCA-617
RECEIVED AND FILED
FOR RECORD
At 8:45 O'Clock A.M.

APR 28 1987

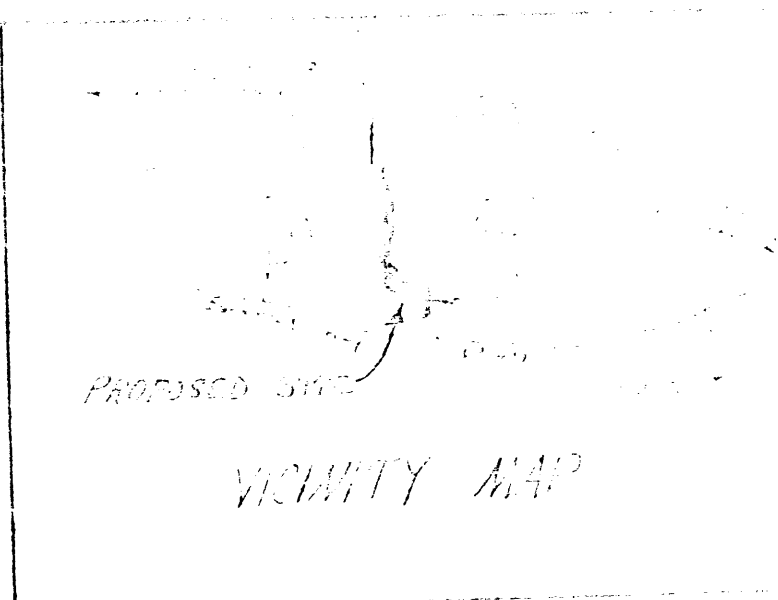
CARRIE REED, Co. Clerk
PARKER COUNTY, TEXAS
By *[Signature]* Deputy

STATE OF TEXAS COUNTY OF PARKER
I hereby certify that this instrument was filed
on the date and time stamped herein by me and
was duly recorded in the volume and page of the
named records of Parker County as stamped here-
on by me.

RECORDED APR 28 1987

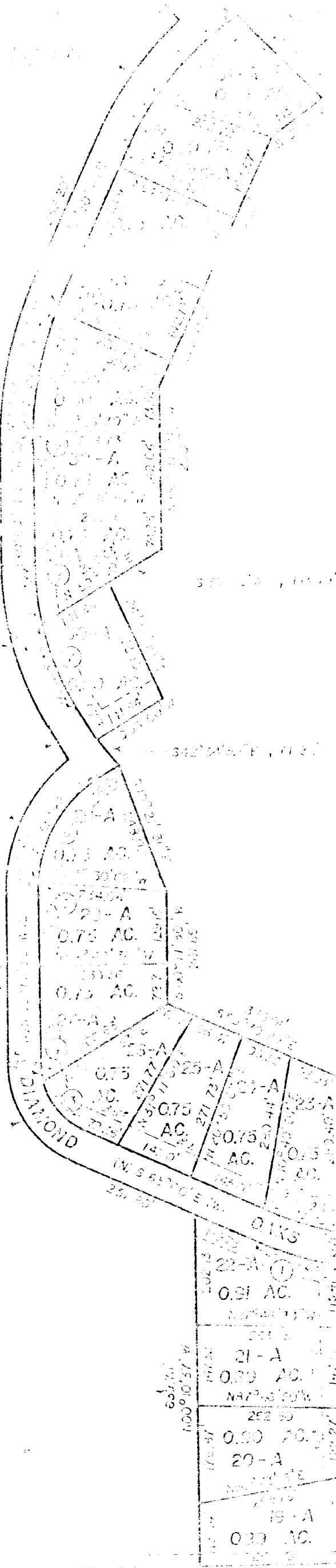


[Signature]
County Clerk, Parker County, Tex.
35.00pd



CURVE DATA

Station	PC	PT	Curve Data
1	120.00	120.00	120.00
2	120.00	120.00	120.00
3	120.00	120.00	120.00
4	120.00	120.00	120.00
5	120.00	120.00	120.00
6	120.00	120.00	120.00
7	120.00	120.00	120.00
8	120.00	120.00	120.00
9	120.00	120.00	120.00
10	120.00	120.00	120.00
11	120.00	120.00	120.00
12	120.00	120.00	120.00
13	120.00	120.00	120.00
14	120.00	120.00	120.00
15	120.00	120.00	120.00
16	120.00	120.00	120.00
17	120.00	120.00	120.00
18	120.00	120.00	120.00
19	120.00	120.00	120.00
20	120.00	120.00	120.00



DIAMOND OAKS SUBDIVISION PHASE V
BEING A PART OF THE T. & P.
R.R. CO. SUR. BLOCK - 3, AS -
1515.
PARKER COUNTY, TEXAS

RESIDENTIAL

HUGHES AND ASSOCIATES
CIVIL ENGINEERS
LAND PLANNING