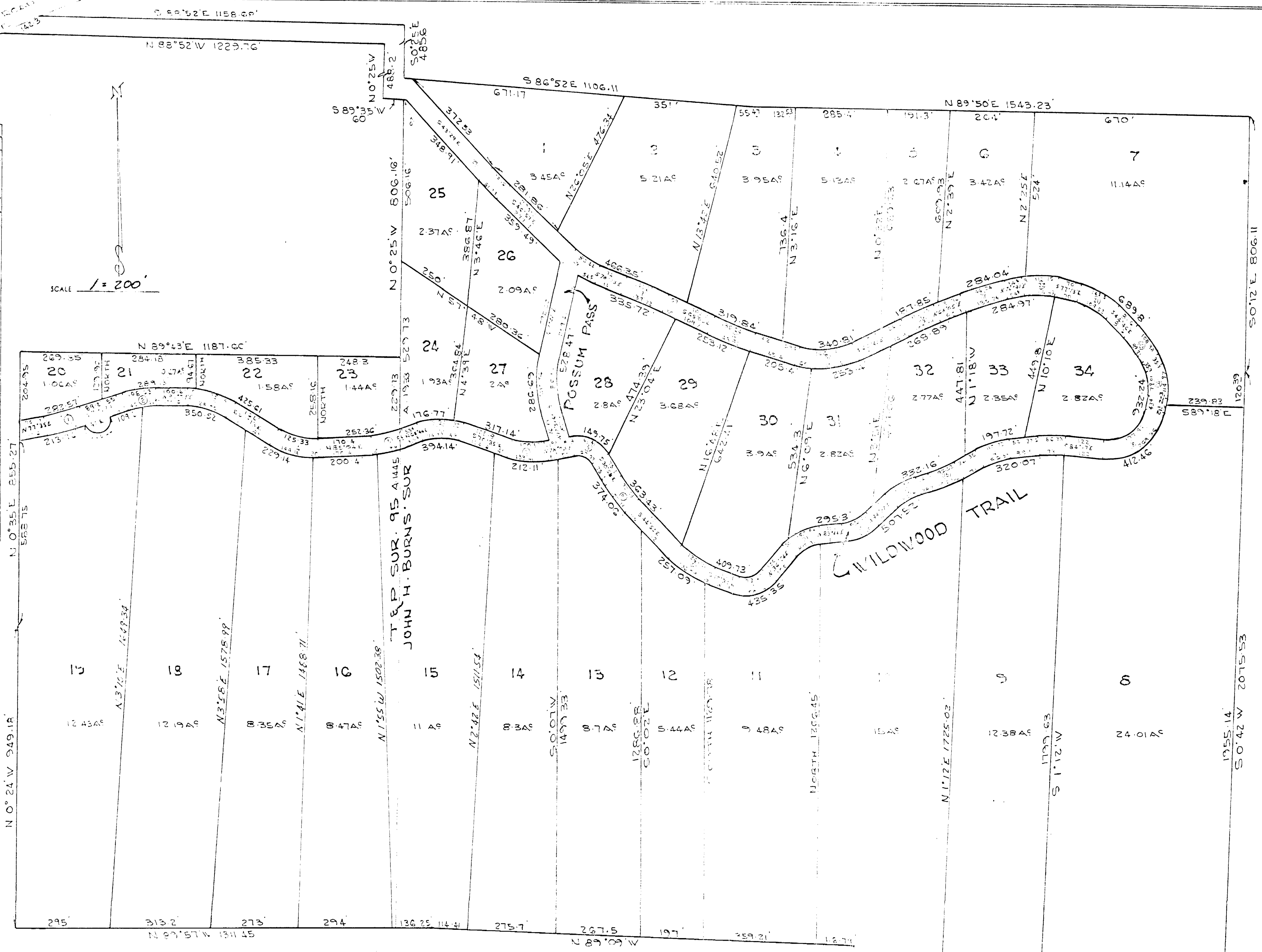


CURVE DATA			
NO	Δ	T	R
1	6°10'	60	1046.06
2	17°50'	50	316.64
3	33°38'	75	248.10
4	31°03'	75	223.83
5	17°00'	50	334.90
6	40°41'	70	188.82
7	31°22'	60	213.7
8	70°59'	60	84.14
9	13°54'	50	410.48
10	25°40'	70	307.28
11	73°04'	65	87.73
12	47°30'	60	130.4
13	39°07'	55	154.82
14	28°42'	50	195.45
15	13°24'	50	425.44
16	23°04'	50	245.03
17	12°44'	40	358.5
18	87°10'	140	146.85
19	34°20'	50	151.80
20	18°53'	50	300.67
21	32°21'	65	223.37
22	26°00'	55	237.29
23	8°30'	70	930.77
24	5°24'	55	1100.29
25	44°20'	100	245.40
26	7°54'	70	1013.76
27	5°08'	70	1501.6
28	23°10'	50	242.47
29	3°28'	40	1321.83
30	27°32'	100	408.10

SCALE 1" = 200'



Approved By Parker County Commissioners
This The 24 Day of April 1970
By _____

"ECHO VALLEY"
A SUBDIVISION OF A PART OF THE
T & P RR CO. SUR. SEC. 95, A-1444
THE JOHN H. BURNS SUR. A-1933 PARKER
COUNTY, TEXAS

HUGHES SURVEYING CO.
REGISTERED PUBLIC SURVEYORS
131 W. CHURCH ST.
WEATHERFORD, TEXAS

PARKER COUNTY SURVEYOR
LY 4-5374

I, *James Hughes Jr.* do hereby
certify that this map is true and correct as surveyed
on the ground.
Date April 1970 2949