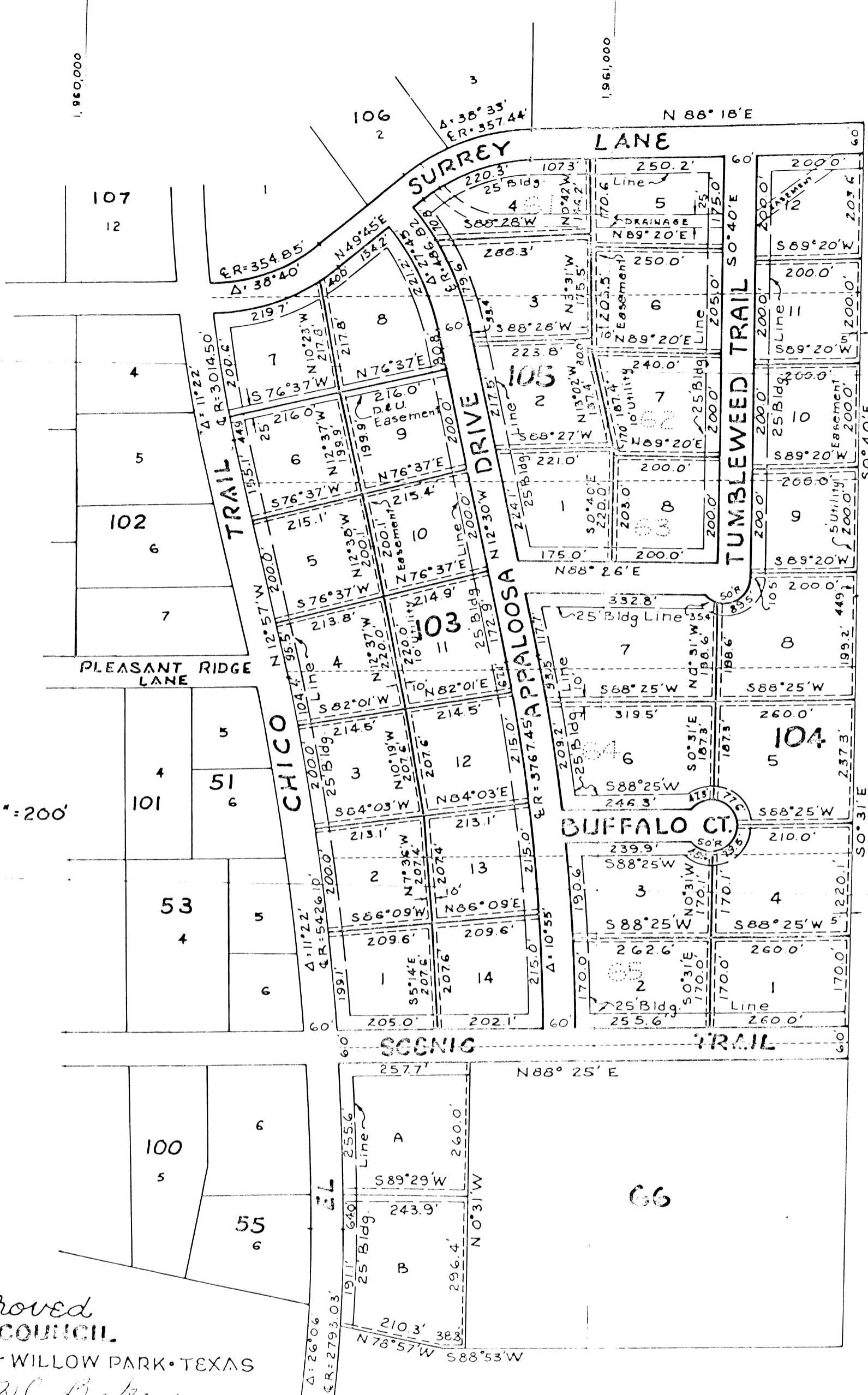




SCALE 1"=200'



Approved
CITY COUNCIL
CITY of WILLOW PARK • TEXAS
BY - J.C. Baker
MAYOR
DATE 6-19-72

3600 B 10

LOT A AND B, BLK. 66; BLK. 103; BLK. 104 AND BLK. 105.
A REVISION OF A PART OF BLK. 61 AND BLK. 62; BLK. 63;
BLK. 64; BLK. 65; AND A PART OF BLK. 66.

WILLOW PARK • PARKER COUNTY, TEXAS
SURVEYED MAY 1972 • BROWN and DAVIES ENGR'S • FORT WORTH

NOTE - Bearings shown are NOT Lambert Grid Bearings. To convert to Lambert Grid Bearings - add 0°04' to N.E. & S.W. bearings and subtract 0°04' from N.W. & S.E.