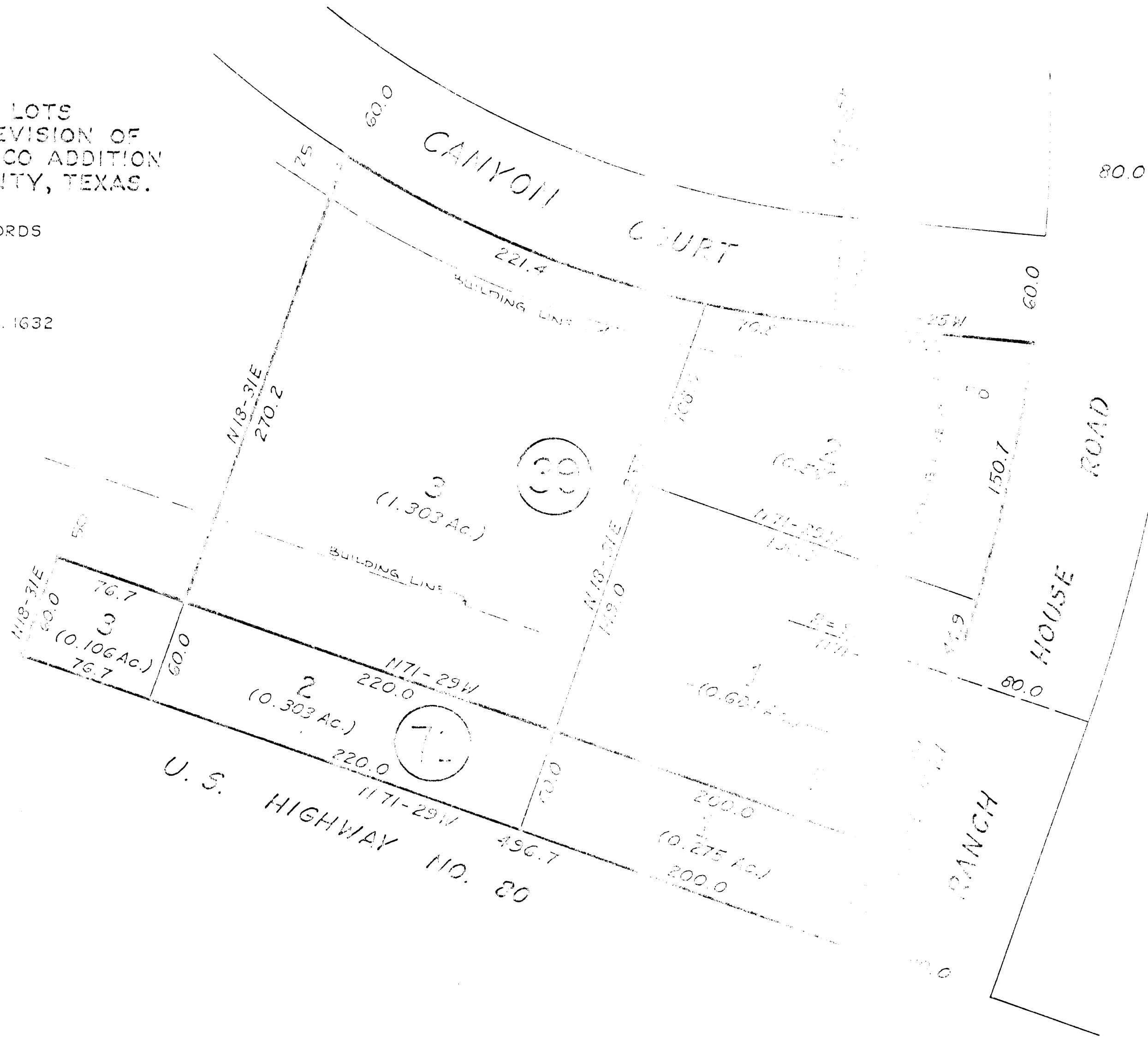


PLAT OF
 LOTS 1, 2, & 3 OF BLOCK 39 AND LOTS
 1, 2, & 3 OF BLOCK 71 BEING A REVISION OF
 BLOCK 39 & BLOCK 71 OF EL CHICO ADDITION
 TO WILLOW PARK IN PARKER COUNTY, TEXAS.

COMPILED FROM OFFICE RECORDS

KENNETH W. SMITH
 REGISTERED PUBLIC SURVEYOR NO. 1632



52424

RECEIVED AND FILED
 FOR RECORD
 AT 8:45 O'clock A.M.

JUL 27 1982

CARRIE REED, Co. Clerk
 PARKER COUNTY, TEXAS

By: *[Signature]* Deputy

STATE OF TEXAS COUNTY OF PARKER
 I hereby certify that this instrument was filed
 on the date and time stamped hereon by me and
 was duly recorded in the volume and page of the
 named records of Parker County as stamped here-
 on by me.

RECORDED JUL 27 1982



Carrie Reed
 County Clerk, Parker County, Tex.

Book 362 A
 Page 6