



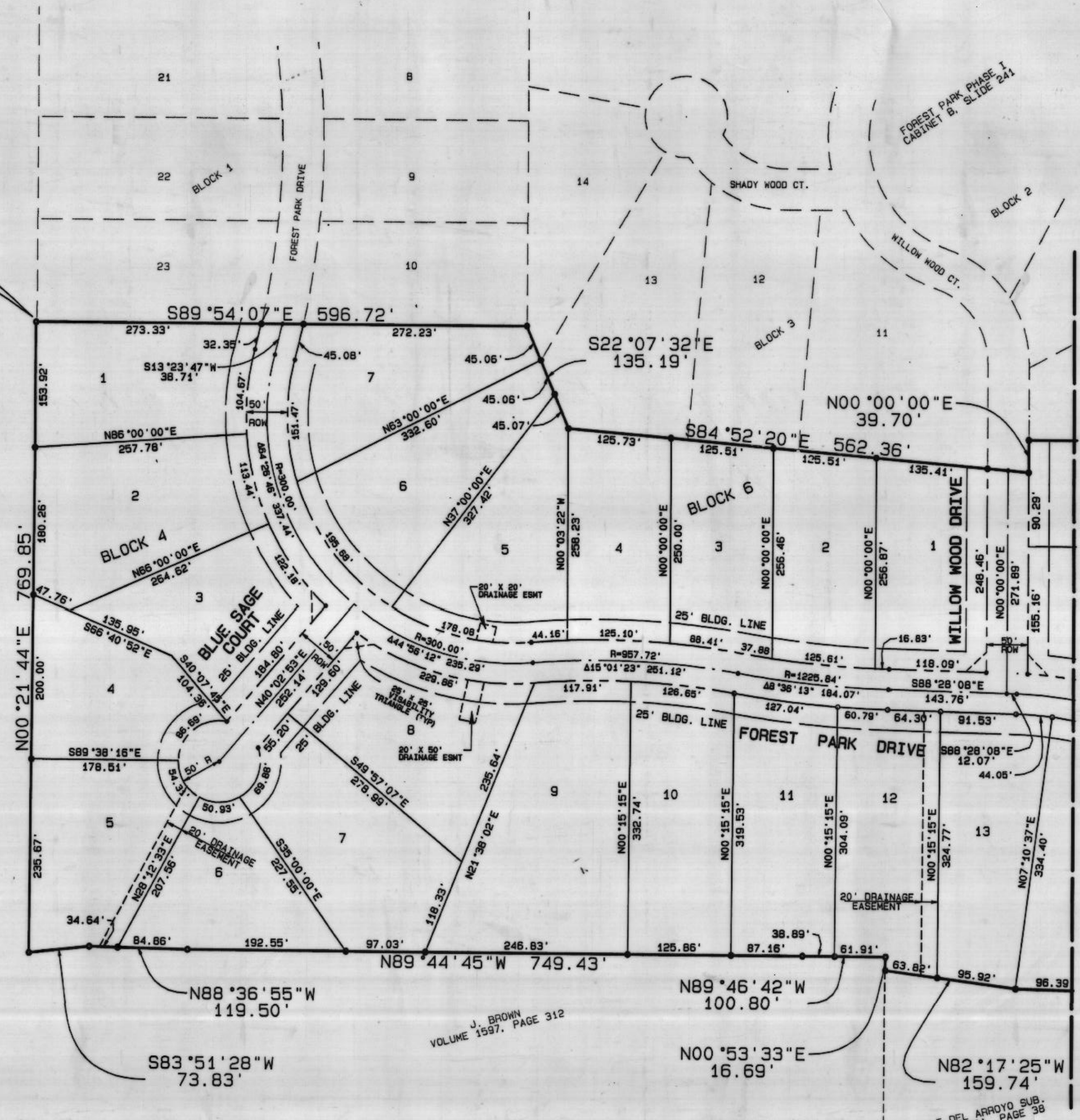
GRAPHIC SCALE 1"=100'



POINT OF BEGINNING

LOT TABULATION		
LOT	SQUARE FOOTAGE	ACREAGE
BLOCK 4		
1	37,760	0.87
2	44,290	1.02
3	33,684	0.77
4	31,416	0.72
5	37,344	0.86
6	30,044	0.69
7	41,829	0.96
8	41,405	0.95
9	40,425	0.93
10	41,252	0.95
11	39,167	0.90
12	38,998	0.90
13	38,145	0.88
14	42,572	0.98
15	43,507	1.00
16	46,710	1.07
17	49,992	1.15
18	50,157	1.15
19	50,250	1.16
20	50,550	1.16
21	50,841	1.17
22	51,404	1.18
23	51,351	1.18
24	51,275	1.18
25	51,797	1.19
26	52,040	1.20
BLOCK 5		
1	31,258	0.72
2	33,563	0.77
3	32,839	0.75
4	33,795	0.77
5	34,888	0.80
6	34,098	0.78
7	47,837	1.10
8	37,131	0.85
9	39,703	0.91
10	35,058	0.81
11	34,447	0.79
12	31,770	0.73
13	32,540	0.75
14	33,173	0.76
15	32,493	0.75
16	32,277	0.74
BLOCK 6		
1	34,083	0.78
2	33,222	0.76
3	31,551	0.72
4	33,778	0.77
5	39,850	0.92
6	34,040	0.78

VALLEY TRAILS ESTATES
VOLUME 360A, PAGE 3B



J. BROWN
VOLUME 1597, PAGE 312

VALLE DEL ARROYO SUB.
VOLUME 360A, PAGE 3B

LEGAL DESCRIPTION

BEING a 47.85 acre tract of land situated in the C.C. McCarver Survey, Abstract No. 908, Parker County, Texas, and being a part of that 50.00 acre tract conveyed by Smith Family Investments, L.L.C. to East Weatherford, Ltd. as evidenced by deed recorded in Book 1693, Page 872, Deed Records, Parker County, Texas; also being a part of that 44.109 acre tract conveyed by Fitzhugh to East Weatherford, Ltd., as evidenced by deed recorded in Book 1693, Page 876, P.R.P.C.T. and being more particularly described as follows:

BEGINNING at a found 3/8 inch steel pin for the southwest corner of Lot 23, Block 1, Forest Park Addition Phase I, an addition to the City of Weatherford as recorded in Plat Cabinet B, Slide 241, Plat Records, Parker County, Texas;

THENCE S 89°54'07" E a distance of 596.72 feet to a found 3/8 inch steel pin for the southeast corner of Lot 10, Block 3, Forest Park Phase I;

THENCE S 22°24'33" E a distance of 135.18 feet to a found 3/8 inch steel pin for the most southerly southwest corner of Lot 13, Block 3, Forest Park Phase I;

THENCE S 84°51'31" E a distance of 562.12 feet to a found 3/8 inch steel pin for the southeast terminus of Willow Wood Court as platted in Forest Park Phase I;

THENCE N 00°00'00" E, a distance of 39.70 feet to a found 3/8 inch steel pin for the southwest corner of Lot 9, Block 2, Forest Park Phase I;

THENCE N 90°00'00" E a distance of 244.14 feet to a found 3/8 inch steel pin for the southeast corner of Lot 9, Block 2, Forest Park Phase I;

THENCE N 00°00'00" E a distance of 302.36 feet to a found 3/8 inch steel pin for the southwest corner of Lot 3, Block 2, Forest Park Phase I;

THENCE N 68°08'31" E a distance of 481.80 feet to a found 3/8 inch steel pin in the west line of Mikus Road for the southeast corner of Lot 1, Block 2, Forest Park Phase I;

THENCE S 30°38'47" E a distance of 1185.71 feet with said west line to a set 3/8 inch steel pin for corner;

THENCE S 22°08'30" E a distance of 214.38 feet with said west line to a set 3/8 inch steel pin for corner;

THENCE S 11°43'20" E a distance of 168.97 feet with said west line to a set 3/8 inch steel pin for corner;

THENCE N 89°33'04" W a distance of 563.00 feet to a set 3/8 inch steel pin for corner;

THENCE N 00°39'31" E a distance of 99.20 feet to a set 3/8 inch steel pin for corner;

THENCE N 85°46'47" E a distance of 249.28 feet to a set 3/8 inch steel pin for corner;

THENCE N 86°02'09" E a distance of 260.08 feet to a set 3/8 inch steel pin for corner;

THENCE N 41°54'35" W a distance of 139.17 feet to a set 3/8 inch steel pin for corner;

THENCE N 32°44'41" W a distance of 86.06 feet to a set 3/8 inch steel pin for corner;

THENCE N 88°28'08" W a distance of 223.79 feet to a set 3/8 inch steel pin for corner;

THENCE N 82°17'25" W a distance of 159.74 feet to a set 3/8 inch steel pin for corner;

THENCE N 00°53'33" W a distance of 16.69 feet to a set 3/8 inch steel pin for corner;

THENCE N 89°46'42" W a distance of 100.80 feet to a set 3/8 inch steel pin for corner;

THENCE N 88°44'45" W a distance of 749.93 feet to a set 3/8 inch steel pin for corner;

THENCE N 88°36'55" W a distance of 119.50 feet to a set 3/8 inch steel pin for corner;

THENCE S 83°51'28" W a distance of 73.83 feet to a set 3/8 inch steel pin in the east line of Valley Trails Estates as recorded in Volume 360A, Page 3B, P.R.P.C.T.;

THENCE N 00°21'44" E a distance of 769.85 feet with the east line of Valley Trails Estates to the POINT OF BEGINNING and CONTINUING 2,084,463 square feet, 47.85 acres of land, more or less.

SURVEYOR'S CERTIFICATE

I, CHARLES F. STARK, a Registered Professional Land Surveyor in the State of Texas, hereby certify this drawing correctly reflects the facts found at the time of this survey and this drawing correctly shows all visible easements and rights-of-way, known to me at the time of this survey.

Charles F. Stark 7/6/00



FINAL PLAT
OF
FOREST PARK ADDITION
PHASE 2

CITY OF WEATHERFORD,
PARKER COUNTY, TEXAS,
AUGUST 1999