

85001

RECEIVED AND FILED  
FOR RECORD  
At 2:39 o'clock

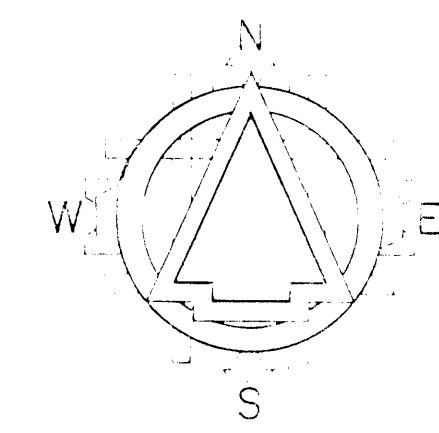
JUN 26 1984

CARRIE REED, Co. Clerk  
PARKER COUNTY, TEXAS  
By [Signature] Deputy

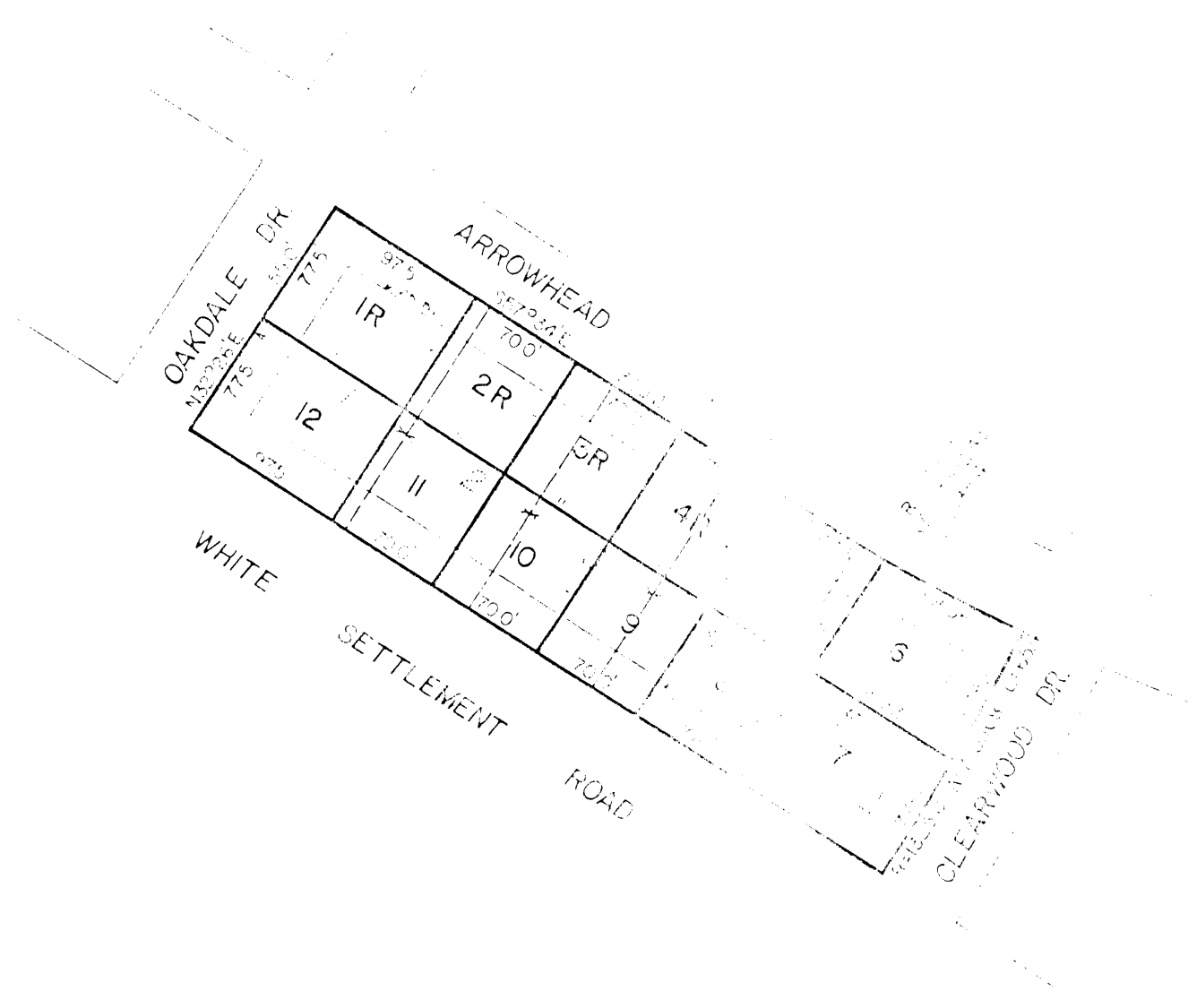
STATE OF TEXAS COUNTY OF PARKER  
I hereby certify that the instrument was filed  
in the date and time stamped herewith and  
that a record of its volume and page in the  
public records of Parker County as stated here  
on is.

RECORDED JUN 26 1984

SEAL [Signature]  
County Clerk, Parker County, Tex.



GRAPHIC SCALE IN FEET  
ORIGINAL SCALE: 1"=100'



REPLAT SHOWING LOTS 1R, 2R, 3R, 4R, 5R, 6, 7, 8, 9, 10, 11, and 12, BLOCK 4  
**HILLTOP PARK - SECTION ONE**  
AN ADDITION TO  
MESA GRANDE VILLAGE,  
PARKER COUNTY, TEXAS

- BEING A REVISION OF LOTS 1, 2, 3, 4, 5, BLOCK 4  
AS RECORDED IN VOLUME 355, PAGE 230, P.R.P.C.T.

APPROVED 25 June  
COMMISSIONERS COURT  
PARKER COUNTY, TEXAS

COUNTY  
[Signature]

R. A. Heffington  
**SURTEX INC.**  
REGISTERED PUBLIC SURVEYORS

JOB NO. 85001  
DATE June 21 84  
DRAWN BY [Signature]  
COMPUTED BY [Signature]

