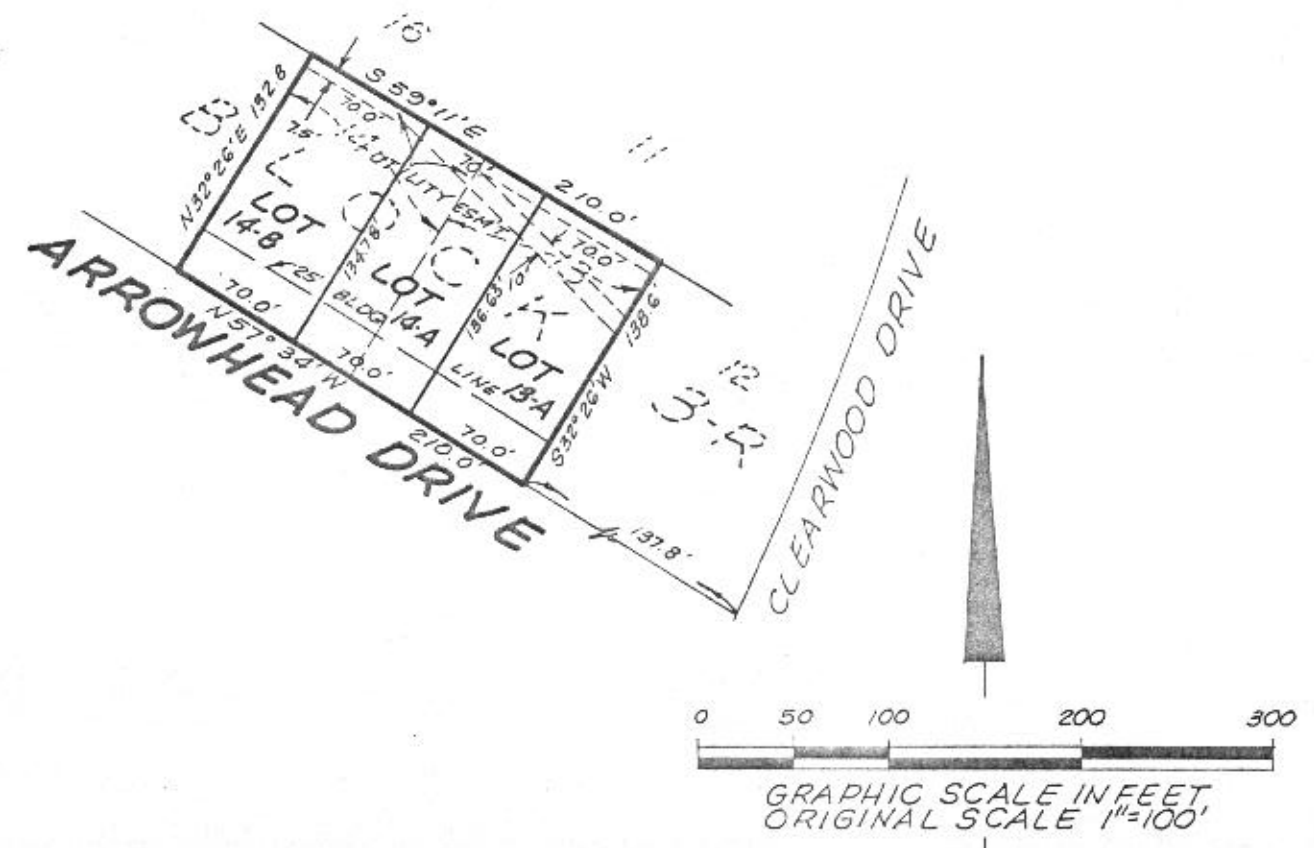


35413

RECEIVED AND FILED
FOR RECORD
At 2:15 O'Clock P.M.
MAY 05 1981
CARRIE REED, Co. Clerk
PARKER COUNTY, TEXAS
By J.C. Deputy
10.0000



STATE OF TEXAS COUNTY OF PARKER
I hereby certify that this instrument was filed
on the date and time stamped herein by me and
was duly recorded in the volume and page of the
named records of Parker County as stamped here-
on by me.
RECORDED MAY 05 1981
Carrie Reed
County Clerk, Parker County, Tex.

PLAT SHOWING
LOTS 13-A, 14-A, & 14-B, BLOCK 3-R,
HILLTOP PARK
SECTION ONE
AN ADDITION TO
MESA GRANDE VILLAGE
PARKER COUNTY, TEXAS
BEING A REVISION OF LOTS 13 & 14, BLOCK 3-R
AS RECORDED IN VOL. 355, PG. 230, D.R.P.C.T.

NOTE - IRON RODS SET
AT ALL CORNERS
SURVEYED ON THE GROUND
UNDER MY SUPERVISION
FEBRUARY 1981
R.A. Heffington



APPROVED FOR RECORDATION, this the 30 day of
April, 1981, by the Commissioners
Court of Parker County, Texas.
Gerald W. Ludwell COUNTY JUDGE
Waymon Whitt COMMISSIONER
Charles H. ... COMMISSIONER
Harold ... COMMISSIONER
... COMMISSIONER

SURTEx, INC.
REGISTERED PUBLIC SURVEYORS
R. A. HEFFINGTON
3001 RACE STREET
P. O. Box 7021
FORT WORTH, TEXAS 76111
817/834-7481