

DEDICATION

FIELD NOTES of a 28.12 Acre tract of land, being a part of the Maria Antonio Mesa Survey, Abstract 856 and the A. Moore Survey, Abstract 905, Parker County, Texas and being more fully described by metes and bounds as follows:

BEGINNING at a steel rod, said point being the NW corner of the A. Moore Survey, Abstract 905;

THENCE S 0 deg. 26 min. 13 sec. W, 946.86 ft. to a steel rod for a corner;

THENCE S 89 deg. 18 min. 16 sec. E, 276.02 ft. to a steel rod for a corner;

THENCE S 0 deg. 26 min. 13 sec. W, 65 ft. to a steel rod for a corner;

THENCE S 89 deg. 18 min. 16 sec. E, 672.05 ft. to a steel rod for a corner;

THENCE N 0 deg. 26 min. 13 sec. E, 100.91 ft. to a steel rod for a corner;

THENCE S 89 deg. 18 min. 16 sec. E, 239.1 ft. to a steel rod for a corner;

THENCE N 0 deg. 26 min. 13 sec. E, 911.55 ft. to a steel rod for a corner;

THENCE N 89 deg. 29 min. 47 sec. W, 179.1 ft. to a steel rod for a corner;

THENCE N 89 deg. 18 min. 16 sec. W, 60 ft. to a steel rod for a corner;

THENCE N 0 deg. 05 min. 10 sec. E, 526.68 ft. to a steel rod for a corner, in the SBL of Bankhead Drive;

THENCE N 63 deg. 36 min. W, with the SBL of the above mentioned Bankhead Drive, 64.40 ft. to a steel rod for a corner;

THENCE S 50 deg. 05 min. 10 sec. W, 494.45 ft. to a steel rod for a corner;

THENCE N 89 deg. 18 min. 16 sec. W, 611.71 ft. to a steel rod for a corner;

THENCE S 0 deg. 26 min. 13 sec. W, 55 ft. to a steel rod for a corner;

THENCE N 89 deg. 18 min. 16 sec. W, 276.02 ft. to the place of beginning and containing 28.12 Acres of land, more or less.

STATE OF TEXAS
 COUNTY OF PARKER
 THEREFORE KNOW ALL MEN BY THESE PRESENTS:
 THAT We, Raymond Blair and Keith Schrick, the owners of the above described tracts of land, do hereby adopt the foregoing plat to be known as I-20 Industrial Park, an addition to Parker County, Texas and do hereby dedicate to the public use forever the streets, and easements shown thereon.

IN WITNESS WHEREOF THIS DEDICATION IS EXECUTED
 this the 23 day of JAN., 1981

Raymond Blair
Keith Schrick

STATE OF TEXAS
 COUNTY OF PARKER
 BEFORE ME, the undersigned, a Notary Public, in and for said County and State, on this day personally appeared Raymond Blair and Keith Schrick, known to me to be the persons whose names are subscribed to the foregoing instrument and acknowledged to me that they executed the same for purpose and consideration therein expressed.

GIVEN UNDER MY HAND AND SEAL OF OFFICE THIS THE 23 DAY OF JAN., 1981.

Notary Public

STATE OF TEXAS
 COUNTY OF PARKER
 the undersigned, as lien holders on the acreage subdivided according to this plat, hereby consents to such subdivision, and joins in the dedication of the streets and easements.

John P. Hume, Jr.
John A. Hume

STATE OF TEXAS
 COUNTY OF PARKER
 BEFORE ME, the undersigned, a Notary Public, in and for said County and State, on this day personally appeared John P. Hume, Jr. and John A. Hume, known to me to be the person and officer whose name is subscribed to on the foregoing instrument and acknowledged to me that he executed the same for the purpose and consideration therein expressed.

GIVEN UNDER MY HAND AND SEAL OF OFFICE THIS THE 23 day of January 1981.

Notary Public

CITY OF WEATHERFORD, CHAIRMAN OF PLANNING AND ZONING BOARD, PARKER COUNTY, TEXAS
John P. Hume, Jr.

CITY COMMISSION OF WEATHERFORD, PARKER COUNTY, TEXAS
 Approved this the 23 day of January, 1981

ACCEPTED BY: _____

APPROVED BY THE PARKER COUNTY COMMISSIONERS this the 26 day of JAN, 1981

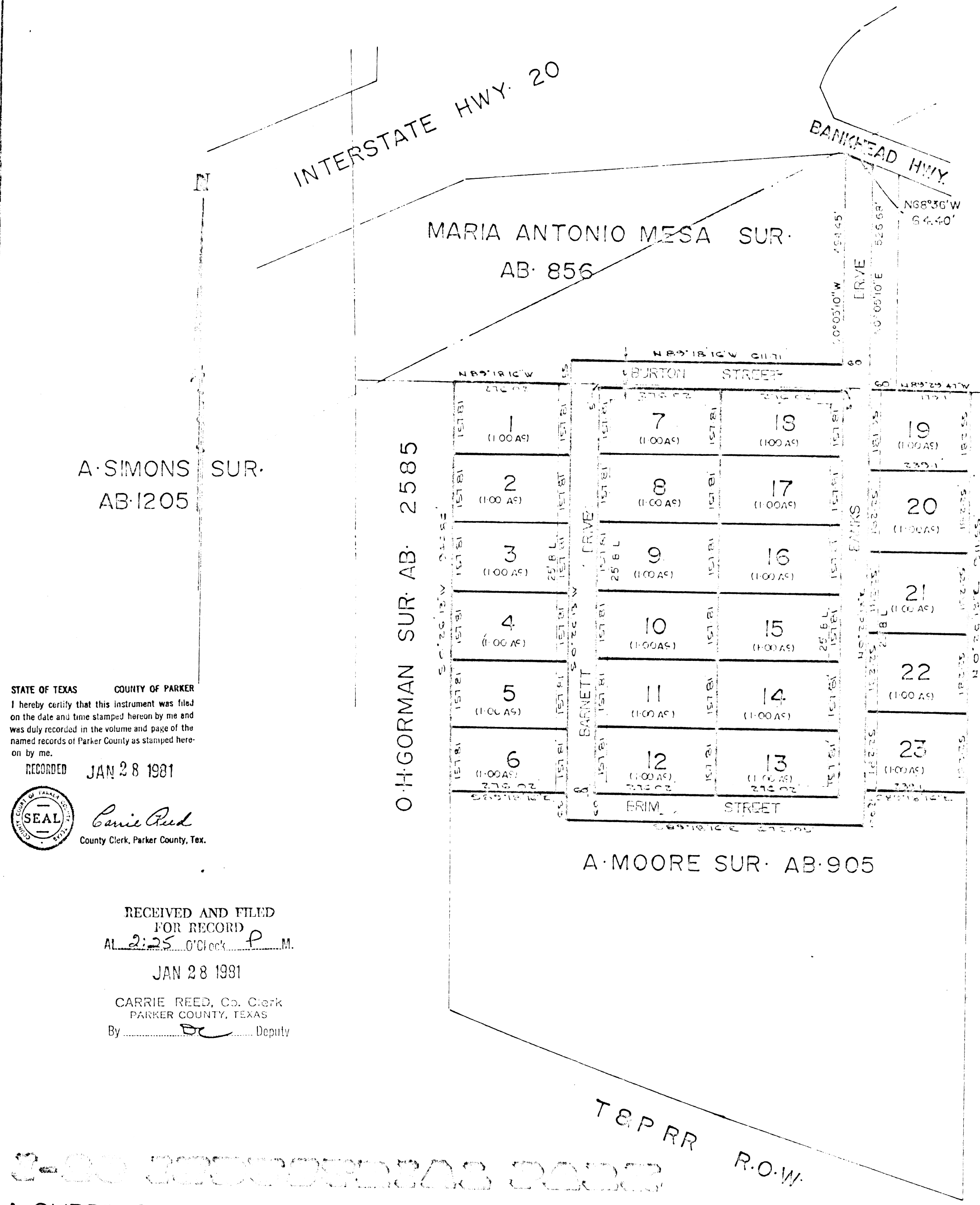
ACCEPTED BY: _____
 County Judge

Charles W. Sanderson

LEGEND
 O — IRON PIPE
 ⊙ — STEEL ROD
 ⊗ — FENCE CORNER
 -X- — FENCE

HUGHES AND ASSOCIATES
 LAND SURVEYING
 CIVIL ENGINEERING
 LAND PLANNING
 131 W. CHURCH STREET - WEATHERFORD, TEXAS
 OFFICE 594-5374 HOME 594-2163

I, Tommy Hughes, Jr. certify that this map was prepared from field notes of an actual survey made by me or under my supervision and to the best of my knowledge and belief represents said survey.



STATE OF TEXAS COUNTY OF PARKER
 I hereby certify that this instrument was filed on the date and time stamped hereon by me and was duly recorded in the volume and page of the named records of Parker County as stamped hereon by me.

RECORDED JAN 28 1981
 County Clerk, Parker County, Tex.
Carrie Reed

RECEIVED AND FILED FOR RECORD
 AL 2:25 P M
 JAN 28 1981
 CARRIE REED, Co. Clerk
 PARKER COUNTY, TEXAS
 By DC Deputy

A SUBDIVISION IN THE MARIA ANTONIO MESA SUR. ab. 856 AND THE A. MOORE SUR. ab. 905 PARKER COUNTY, TEXAS