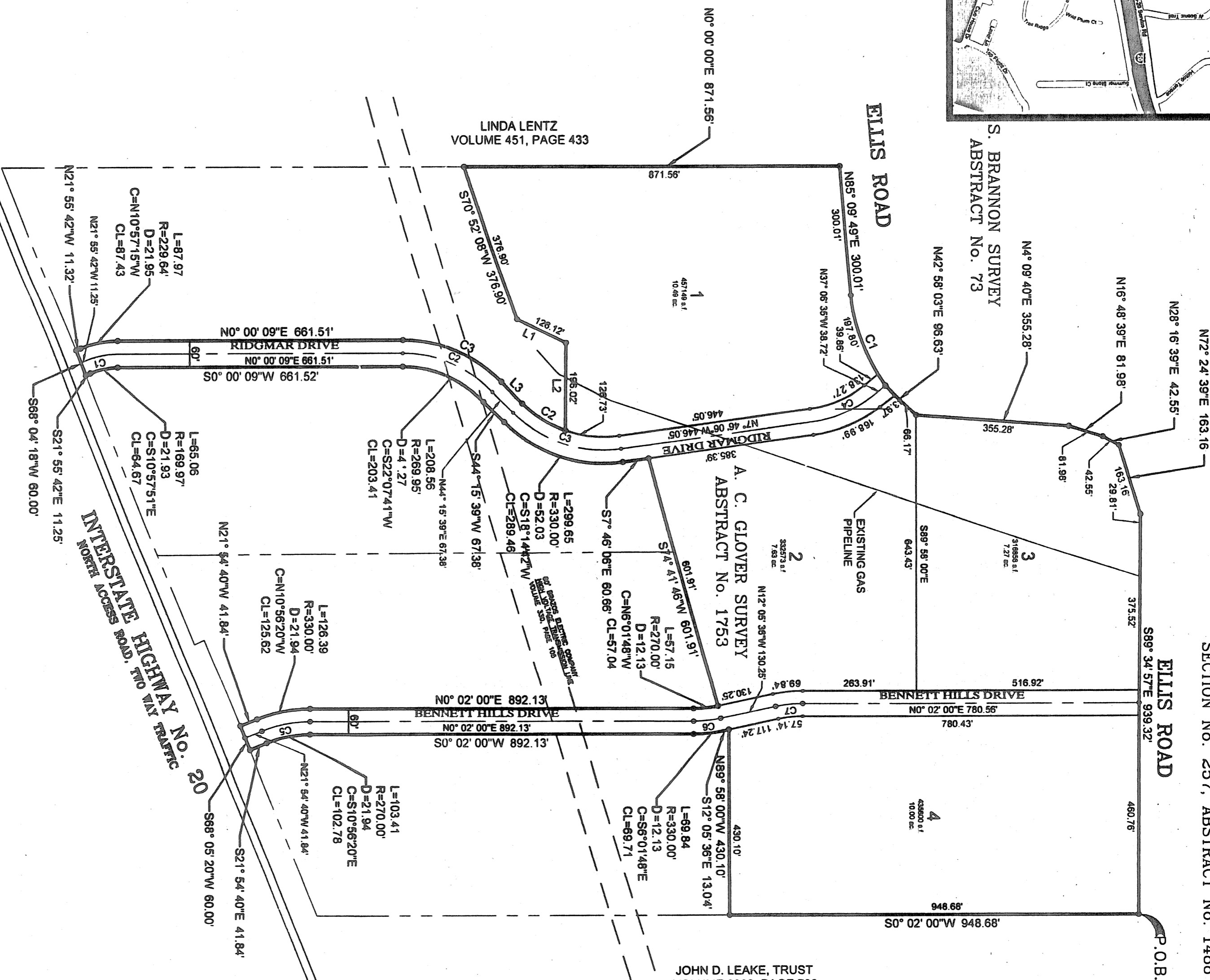
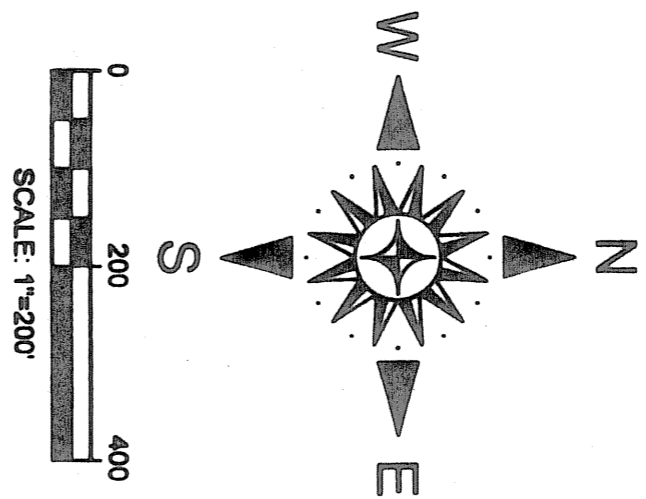
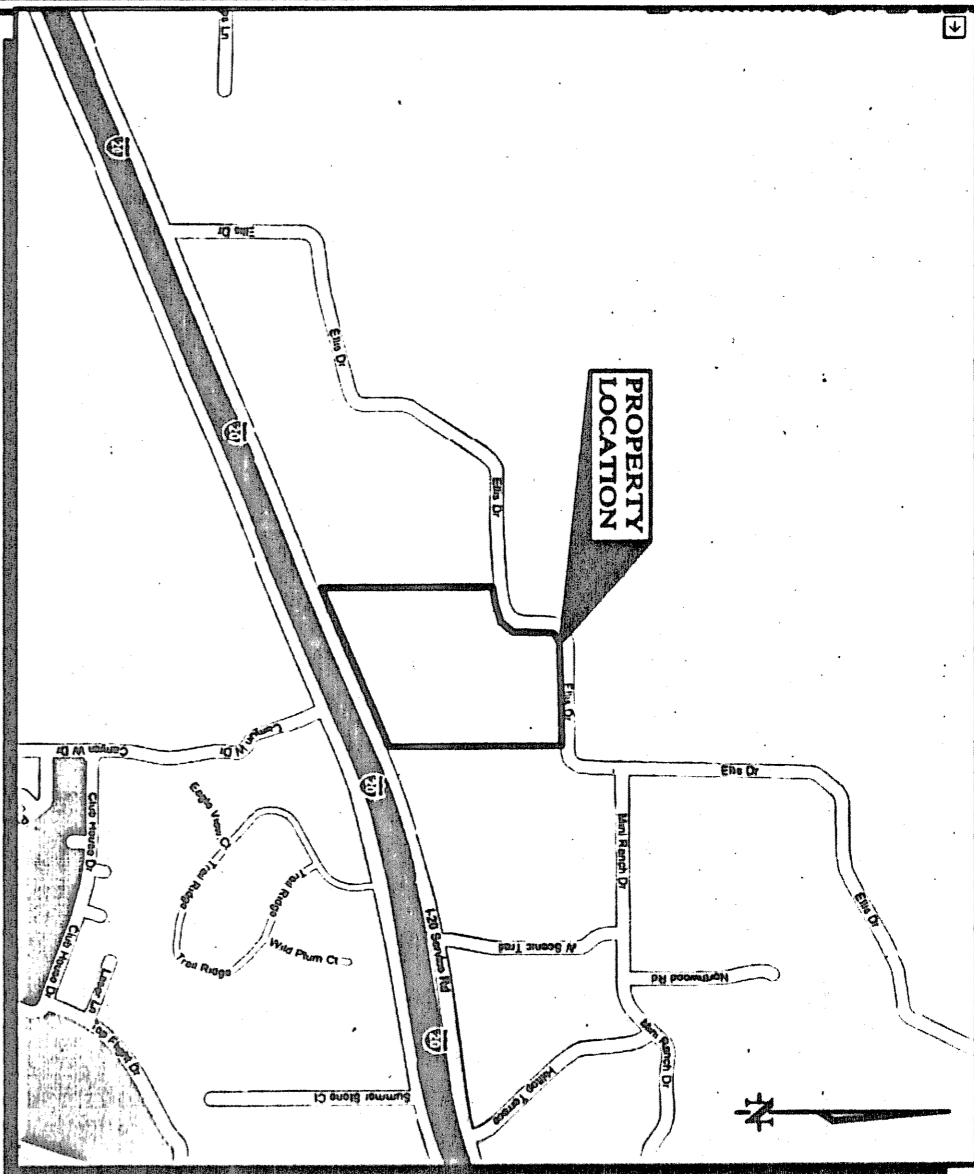


C-1050

Doc# 667163
Book 2605 Page 485

Doc# 667163 Fees: \$66.00
01/23/2008 10:37AM # Pages 1
Filed & Recorded at
TARRANT COUNTY, TEXAS
TARRANT COUNTY CLERK'S OFFICE

T & P RAILROAD COMPANY SURVEY
SECTION No. 257, ABSTRACT No. 1488



ALIGNMENT CURVE DATA			
CURVE #	RADIUS	LENGTH	DELTA
C1	200.00'	76.55'	21° 55' 51"
C2	300.00'	231.73'	44° 15' 24"
C3	300.00'	272.41'	52° 01' 36"
C4	300.00'	153.53'	29° 20' 29"
C5	300.00'	114.90'	21° 56' 40"
C6	300.00'	63.49'	12° 07' 36"
C7	300.00'	63.49'	12° 07' 36"

PARCEL CURVE DATA			
SEGMENT	LENGTH	RADIUS	CHORD
C1	227.83	405.00	N69°02'58"E
C2	118.44	270.00	N31°41'27"E
C3	254.90	328.94	S22°07'42"W

PARCEL LINE DATA			
SEGMENT	LENGTH	DIRECTION	
L1	128.12	S26° 31' 30"W	
L2	198.02	N89° 35' 07"W	
L3	67.39	N44° 15' 39"E	

FINAL PLAT
OF

1-20 WEST PARK ADDITION

40.98 ACRES, LOTS 1-4
A.C. GLOVER SURVEY, A-1753
PARKER COUNTY, TEXAS
JANUARY, 2008

ACCT. NO.: 13899
SCH. DIST.: B2
CITY: CO
MAP NO.: E-17

1062

THIS PROJECT IS NOT SUBJECT TO THE
EXTRA TERRITORIAL JURISDICTION (ETJ)
OF ANY CITY OR TOWN.

SURVEYOR:
DAVID HALE
HARLAND SURVEYING, INC.
106 EDENKA STREET
WEATHERFORD, TEXAS 76086
817-396-9700



P.O. BOX 2230
WEATHERFORD, TX 76086
(817) 341-4242 METRO
(817) 399-4278 FAX
www.barrettengineering.com

OWNER:
JIM MARTIN
119 RANCH HOUSE ROAD, SUITE 400
ALECO, TEXAS 76008