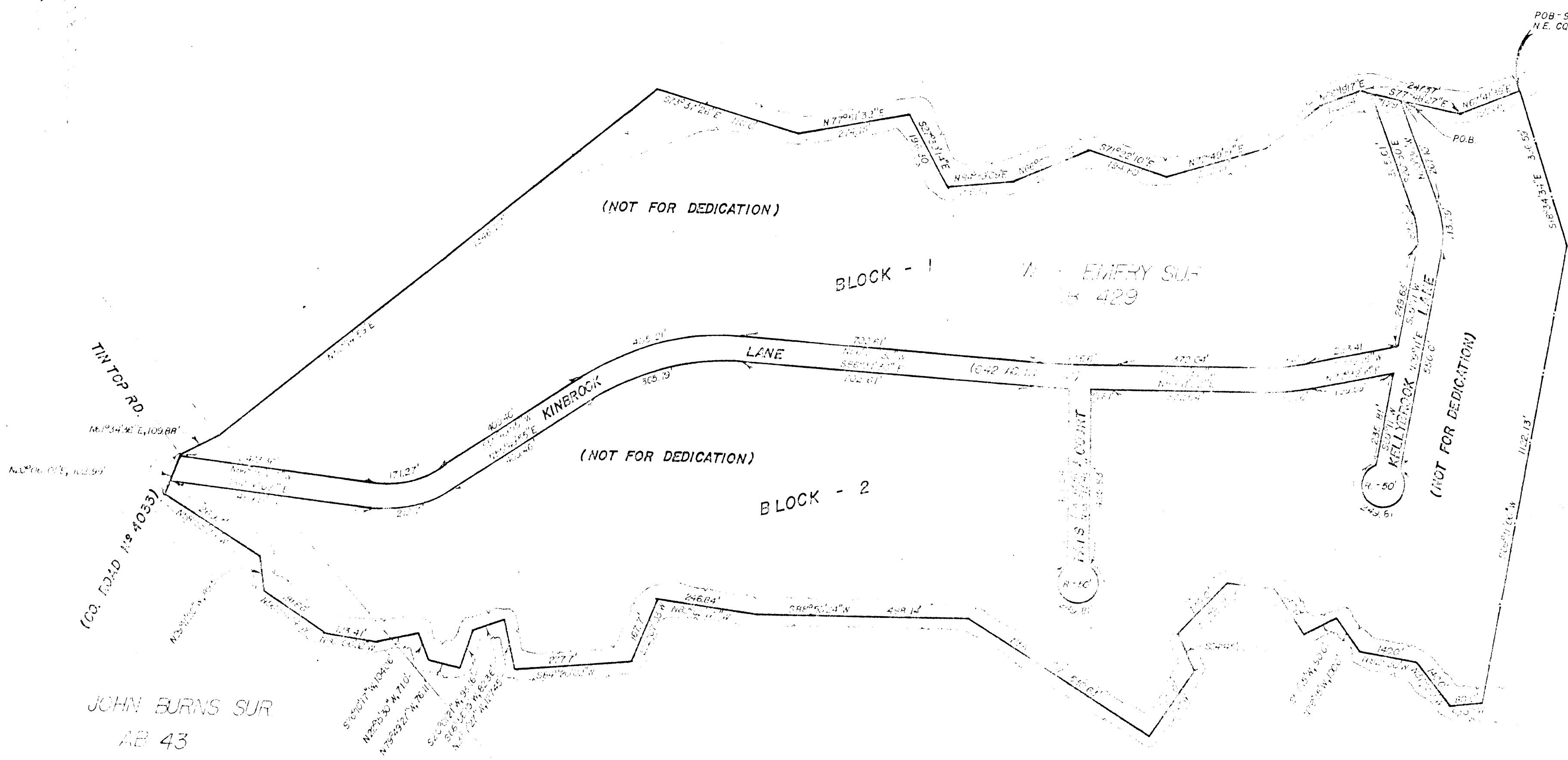


"EXHIBIT A"



72292

RECEIVED AND FILED
FOR RECORD
At 12:45 O'Clock
OCT 11 1983
CARRIE REED, Co. Clerk
PARKER COUNTY, TEXAS
By _____ Deputy

STATE OF TEXAS COUNTY OF PARKER
I hereby certify that this instrument was filed
on the date and time stamped hereon by me and
was duly recorded in the volume and page of the
named records of Parker County as stamped here-
on by me.
RECORDED OCT 11 1983
Carrie Reed
County Clerk, Parker County, Tex.



SKETCH OF ROADS BEING DEDICATED,
ALSO, BEING A PART OF THE W.R. EMERY SUR.
AB. 429 & PART OF THE JOHN BURNS SUR. AB. 43.
PARKER COUNTY, TEXAS

APPROVED BY THE PARKER COUNTY COMMISSIONERS, THIS THE 23rd DAY OF OCTOBER, 1983.
ACCEPTED BY:
_____, COUNTY JUDGE

SCALE _____
LEGEND
O IRON PIPE
C STEEL ROD
X FENCE CORNER
* FENCE

HUGHES AND ASSOCIATES
LAND SURVEYING
CIVIL ENGINEERING
LAND PLANNING
111 E. COLUMBIA, SUITE E WEATHERFORD, TEXAS
OFFICE 594-5374 OR 441-7619 HOME 594-2165

I certify that this map was prepared from field notes of an actual survey made by me or under my supervision and to the best of my knowledge and belief represents said survey.

Date _____ No _____