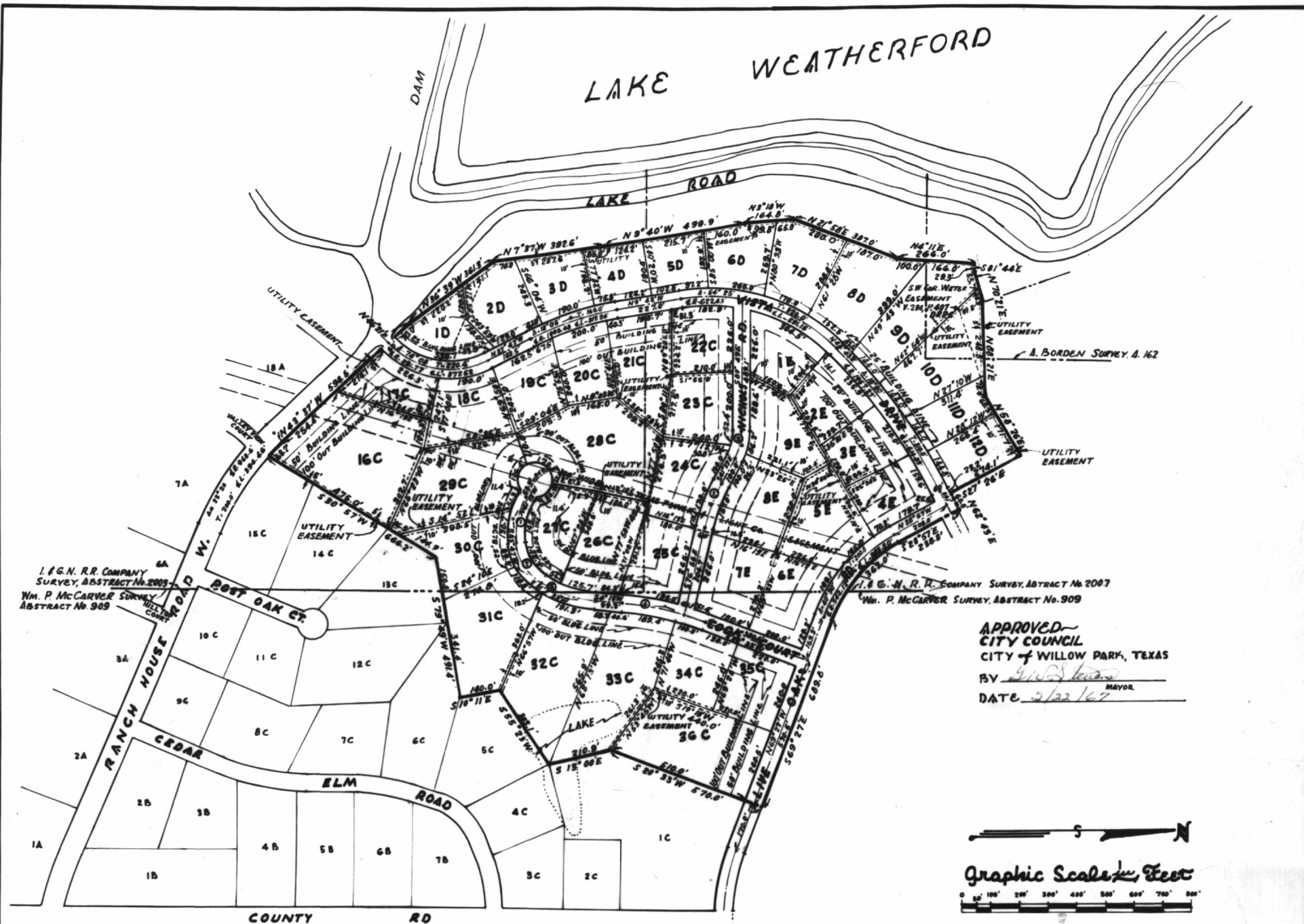


A-120



APPROVED  
 CITY COUNCIL  
 CITY OF WILLOW PARK, TEXAS  
 BY [Signature] MAYOR  
 DATE 3/22/67



CURVE	DATA
COOK COURT	NICHOLS RD
① Δ = 36°00'	① Δ = 15°10'
T = 66.5'	T = 33.0'
ℳR = 268.0'	ℳR = 67.96'
ℳL = 185.70'	ℳL = 165.01'
E = 13.0'	E = 5.55'
② Δ = 62°14'	② Δ = 28°12'
T = 92.0'	T = 50.0'
ℳR = 180.43'	ℳR = 189.06'
ℳL = 172.75'	ℳL = 97.97'
E = 21.54'	E = 6.18'
③ Δ = 77°50'	
T = 100.0'	
ℳR = 411.30'	
ℳL = 196.2'	
E = 11.50'	
④ Δ = 46°20'	
T = 150.0'	
ℳR = 1045.23'	
ℳL = 297.98'	
E = 10.70'	

TRACTS 10 through 12D; TRACTS 1E through 9E;  
 TRACTS 16C through 36C.

# Laguna Vista Estates

WILLOW PARK, PARKER COUNTY, TEXAS

A PART OF THE I & G. N. R.R. COMPANY SURVEY, ABSTRACT No. 2003, 2007  
 THE Wm. P. McCARVER SUR. A. 909, and A. BORDEN SUR. A. 162.

PARKER COUNTY, TEXAS

BROWN and DAVIES, ENGINEERS

APRIL 1967

PROGRESSIVE DEVELOPMENT, INC., DEVELOPERS

