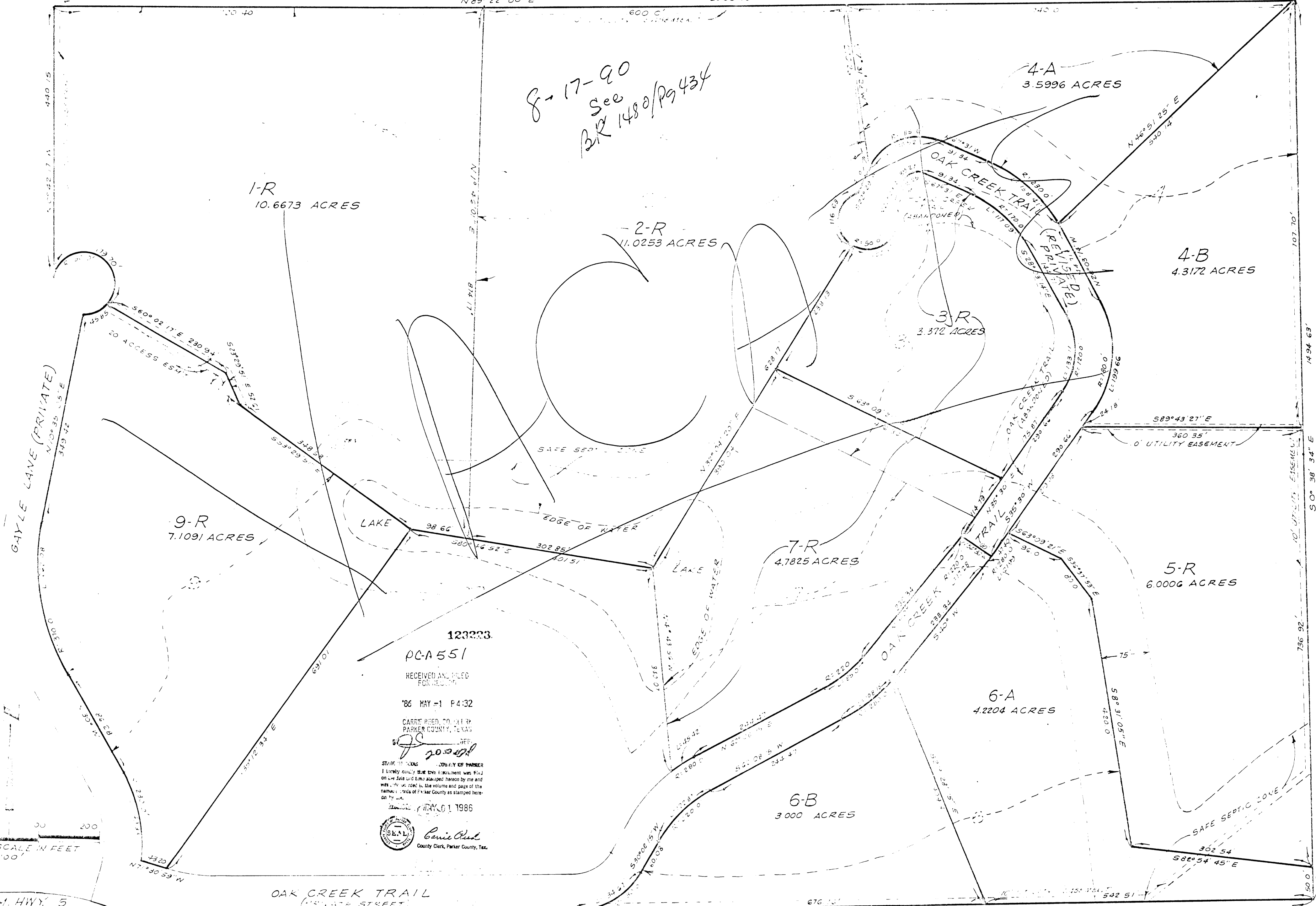


8-17-90
See
BR 1480/P9434



1-R
10.6673 ACRES

2-R
11.0253 ACRES

3-R
3.372 ACRES

4-A
3.5996 ACRES

4-B
4.3172 ACRES

9-R
7.1091 ACRES

7-R
4.7825 ACRES

5-R
6.0006 ACRES

6-A
4.2204 ACRES

6-B
3.000 ACRES

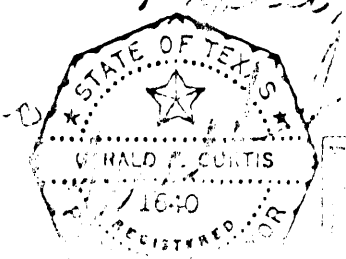
123323
PC-A551
RECEIVED AND FILED
FOR RECORD
86 MAY -1 P432
CARRIE REED, COUNTY CLERK
PARKER COUNTY, TEXAS
MAY 01 1986
Carrie Reed
County Clerk, Parker County, Tex.

GRAPHIC SCALE IN FEET
1" = 100'

MAP OF
LOTS 1-R, 2-R, 3-R, 4-A, 4-B, 5-R, 6-A, 6-B,
7-R & 9-R AND PART OF OAK CREEK TRAIL
LAKE HAVEN
PARKER COUNTY, TEXAS,
BEING A REVISION OF LOTS 1, 2, 3, 4, 5, 6, 7, 8, 9, AND
PART OF OAK CREEK TRAIL, AS SHOWN ON PLAT IN
VOLUME 363 A, PAGE 57, PLAT RECORDS OF PARKER COUNTY

Apr 10
Jack E. Lamer

Plat compiled from surveys made on the ground. All street curve points are marked by iron pins.
Gerry Curtis Associates, Inc.
Surveyors
10-10
REGISTERED



0-B-53-B