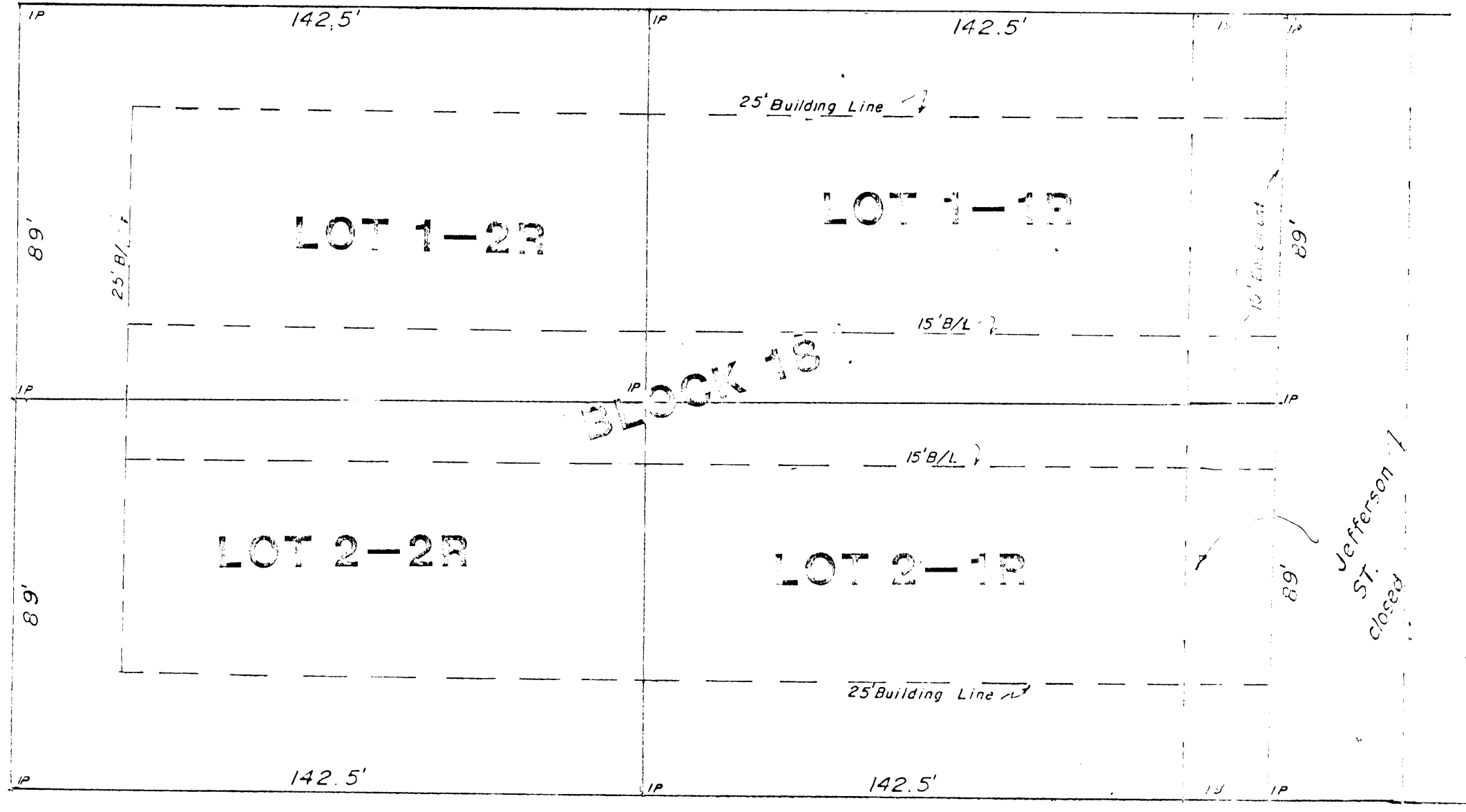


SIMMONS AVENUE

SIMMONS AVENUE



COURT AVENUE

N
1" 30'
112, 1983



L. O. Mitchell

PLAT SHOWING

LOTS, 1-1R, 1-2R; 2-1R, 2-2R.
Being a revision of Lots 1 & 2, Block 18,
and West 19' of closed Jefferson Street,
M&C CALLS Addition V-29 P-119, DRPCT
to the
City of Weatherford, Parker County, Texas

RECEIVED AND FILED
FOR RECORD
At *4:00* P.M.
FEB 06 1983
CARRIE REED, Co. Clerk
PARKER COUNTY, TEXAS
By *[Signature]* Deputy

CITY COMMISSION OF WEATHERFORD,
PARKER COUNTY, TEXAS.

APPROVED BY: _____ DATE *1-21-* 19*83*
MAYOR: _____
(1) *[Signature]*
(2) *[Signature]*
(3) *[Signature]*
(4) _____
ATTEST: *[Signature]*
CITY SECRETARY