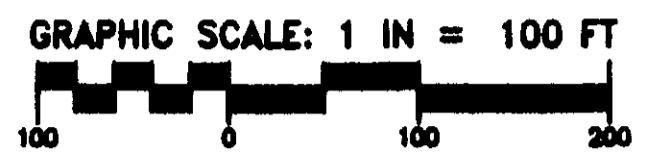
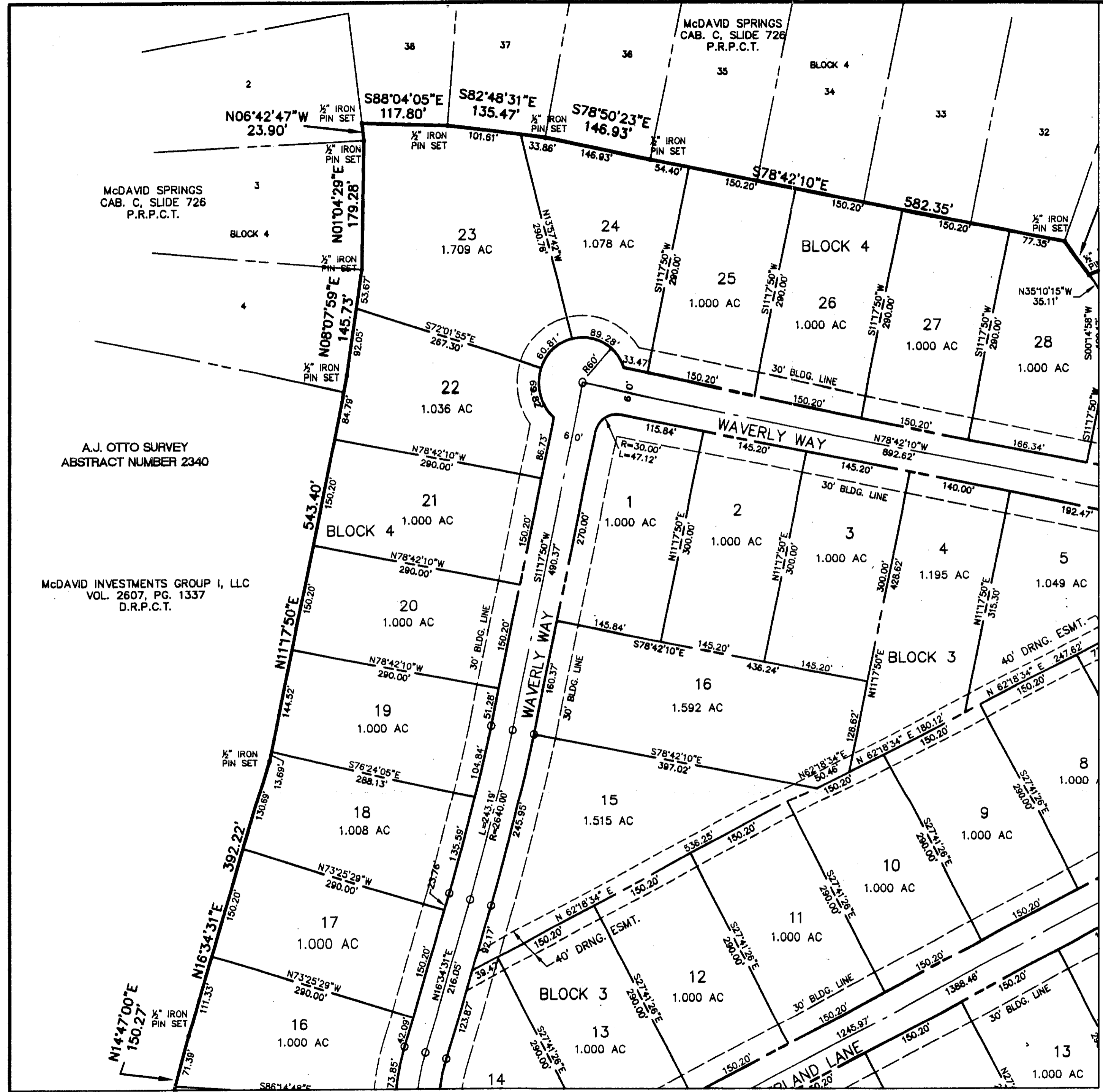


C746



MATCH LINE SHEET 3 OF 5



MATCH LINE SHEET 4 OF 5



FINAL PLAT

**LOTS 3-21, BLOCK 2
LOTS 1-16, BLOCK 3
LOTS 14-30, BLOCK 4
McDAVID SPRINGS**

BEING 63.057 ACRES OF LAND SITUATED IN THE
1 & GN RR COMPANY SURVEY, ABSTRACT NUMBER 1782,
1 & GN RR COMPANY SURVEY, ABSTRACT NUMBER 1783,
& THE AJ OTTO SURVEY, ABSTRACT NUMBER 2340
PARKER COUNTY, TEXAS

PREPARED AUGUST 15, 2008

SD Engineering, Inc.
Site Development Engineering

ACCT. NO.: 14983
SCH. DIST.: AL
CITY: CO
MAP NO.: L-19

PO Box 1387 Alamo, TX 78008-1387
(817) 441-6400 Fax (817) 441-6085
www.sd-engineering.com

SHEET 2 OF 5

BASIS OF BEARING IS THE WEST LINE OF THE McDAVID INVESTMENTS GROUP I, LLC TRACT DESCRIBED IN DEED RECORDED IN VOLUME 2607, PAGE 1337, DEED RECORDS, PARKER COUNTY, TEXAS

DR0189 / 08/05/00 / EVB / 07-01-08 / 7/F