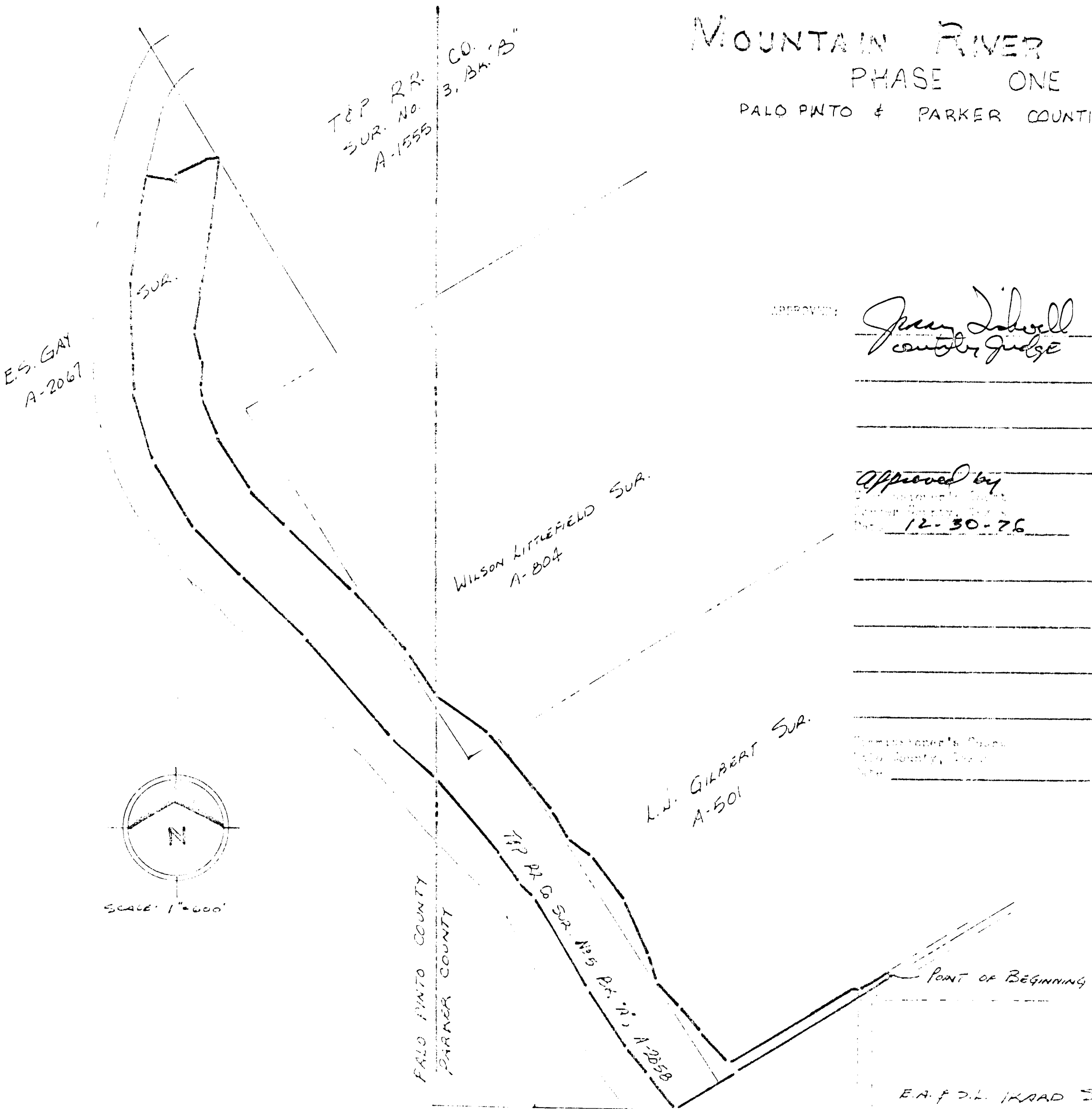


MOUNTAIN RIVER ESTATES PHASE ONE PALO PINTO & PARKER COUNTIES, TEXAS



APPROVED: *James Tidwell*
County Judge

Approved by
12-30-76

Being a true and correct copy of the E.S. GAY SURVEY, Abstract No. 2067, Palo Pinto County, Texas, and the WILSON LITTLEFIELD SURVEY, Abstract No. 204, T. & P. R.R. CO. SURVEY NO. 3, BLOCK 1, A-1555, Palo Pinto & Parker Counties, Texas, and the L.J. GILBERT SURVEY, Abstract No. 501, Parker County; and later ascertained by notes and bounds as follows:

1. Beginning at a point on a County Road, being 1/4 of 52' 15" E 204.29 feet from the north-south line of the L.L. Board Survey, Abstract No. 721, Parker County, Texas;

2. Thence S 89° 15' W a distance of 1,170.00 feet to a point for corner;

3. Thence S 89° 15' W a distance of 471.24 feet to a point for corner on the east bank of the river;

4. Thence S 89° 15' W a distance of 1,170.00 feet to a point for corner;

5. Thence S 89° 15' W a distance of 471.24 feet to a point for corner on the east bank of the river;

6. Thence S 89° 15' W a distance of 1,170.00 feet to a point for corner;

7. Thence S 89° 15' W a distance of 471.24 feet to a point for corner on the east bank of the river;

8. Thence S 89° 15' W a distance of 1,170.00 feet to a point for corner;

9. Thence S 89° 15' W a distance of 471.24 feet to a point for corner on the east bank of the river;

10. Thence S 89° 15' W a distance of 1,170.00 feet to a point for corner;

11. Thence S 89° 15' W a distance of 471.24 feet to a point for corner on the east bank of the river;

12. Thence S 89° 15' W a distance of 1,170.00 feet to a point for corner;

13. Thence S 89° 15' W a distance of 471.24 feet to a point for corner on the east bank of the river;

14. Thence S 89° 15' W a distance of 1,170.00 feet to a point for corner;

15. Thence S 89° 15' W a distance of 471.24 feet to a point for corner on the east bank of the river;

16. Thence S 89° 15' W a distance of 1,170.00 feet to a point for corner;

17. Thence S 89° 15' W a distance of 471.24 feet to a point for corner on the east bank of the river;

18. Thence S 89° 15' W a distance of 1,170.00 feet to a point for corner;

19. Thence S 89° 15' W a distance of 471.24 feet to a point for corner on the east bank of the river;

20. Thence S 89° 15' W a distance of 1,170.00 feet to a point for corner;

54190
STATE OF TEXAS
COUNTY OF PARKER
I hereby certify that this instrument was filed on the date and time stamped here on by me and was duly recorded on the _____ day of _____ A.D., 19____, in Vol. 3____ page _____ of the _____ records of Parker, Texas



RECEIVED AND FILED FOR RECORD
AT 10:55 O'clock A.M.
DEC 30 1976

T. H. "Tommy" McDaniel, Co. Clerk
PARKER COUNTY, TEXAS
By _____ Deputy

J. H. "Tommy" McDaniel
County Clerk, Parker
County, Texas

5700 pd

Registered Professional Engineer
Texas Registration Number 32648