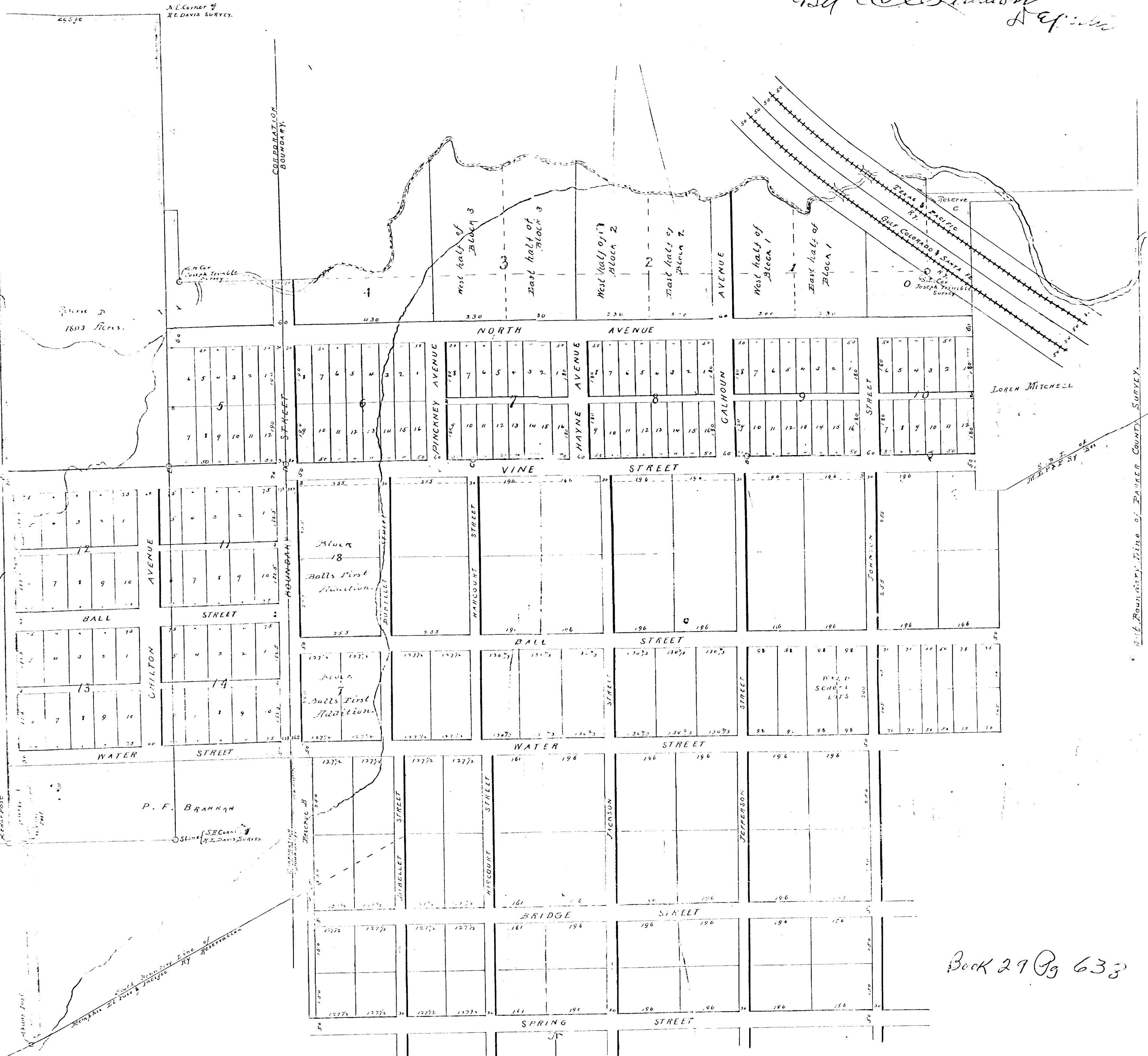


Filed herein Oct 15 1891 of H T M
 Woodward Collins
 By O. S. Sinton
 Dep. Secy



NOTES

This Addition consists of Blocks 0, 1, 2, 3, 4, 5, 6, 7, 8, 9, 10 north of VINE St, and Reserves C & D north of VINE St, and Blocks 11, 12, 13, 14 south of VINE St, and west of BOUNDARY St, and Reserves A & B south of VINE St; the boundary lines are shaded red.

At A, B, C, D, E, F are Cedar Posts, 20x30 inches long, set deep into the ground, with nails driven in the top to indicate the precise north line of VINE St.

A = 16.5 ft east of the S.M. Cor. of lot 10 in Block 10.
 B = 7.5 west - - - - - 10 - - - 9.
 C = 14.2 - - - - - S.B. - - - 10 - - 7.
 D = at the intersection of the Corporation line.
 E = - - - - - East line of the A.L. DAVIS Survey.
 F = 49.5 ft (1 1/2 times) west of E.

PLAT OF
 PC 1-94
 NORTH WEST ADDITION
 TO
 Weatherford, Texas.

By
 J. H. CARUTHERS, T. A. WYTHE & R. S. WEITZELL.
 SCALE 200 ft. = 1 in
 June 6th 1891.
 T. S. Weitzell
 202.

NOTES

Lots 187 in Block 10, and Block C run to the Loren Mitchell survey by the distance what it may.

Block A, and lots 839 in Block 6 run to within 30 ft of the Corporation line, by the distance what it may.

Block and lot lines north of VINE St, and east of BOUNDARY St, are parallel to and at right angles to VINE St.

Block and lot lines north of VINE St, and west of BOUNDARY St, are parallel to VINE St, and BOUNDARY St.

In Blocks 11, 12, 13 & 14 the lines are parallel to VINE St, and to the west line of Blocks 7 & 8 in Balls First Addition.

All dimensions are in feet and fractions or decimals.

Lots 687 in Block 5 run to the east line of the R.E. DAVIS Survey by the distance what it may.

CERTIFICATE OF PROPRIETORS.

We the undersigned, J. H. Caruthers, T. A. Wythe and R. S. Weitzell, sole proprietors of the NORTH WEST ADDITION to Weatherford, Texas, hereby certify this plat to be a true and correct map of said addition as surveyed and laid out by us.

T. A. Wythe
 R. S. Weitzell
 J. H. Caruthers

Book 29 Pg 633