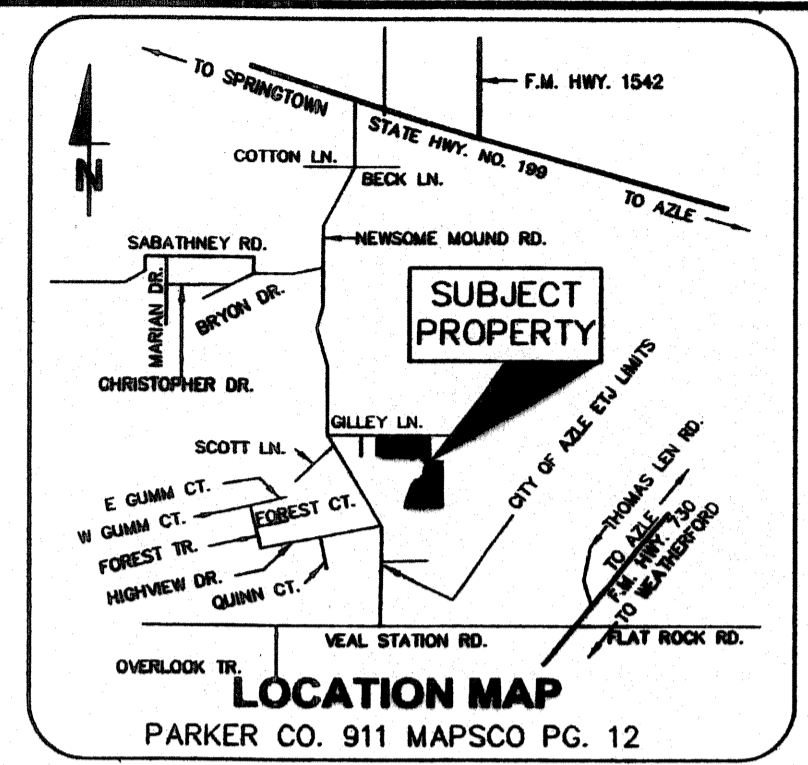
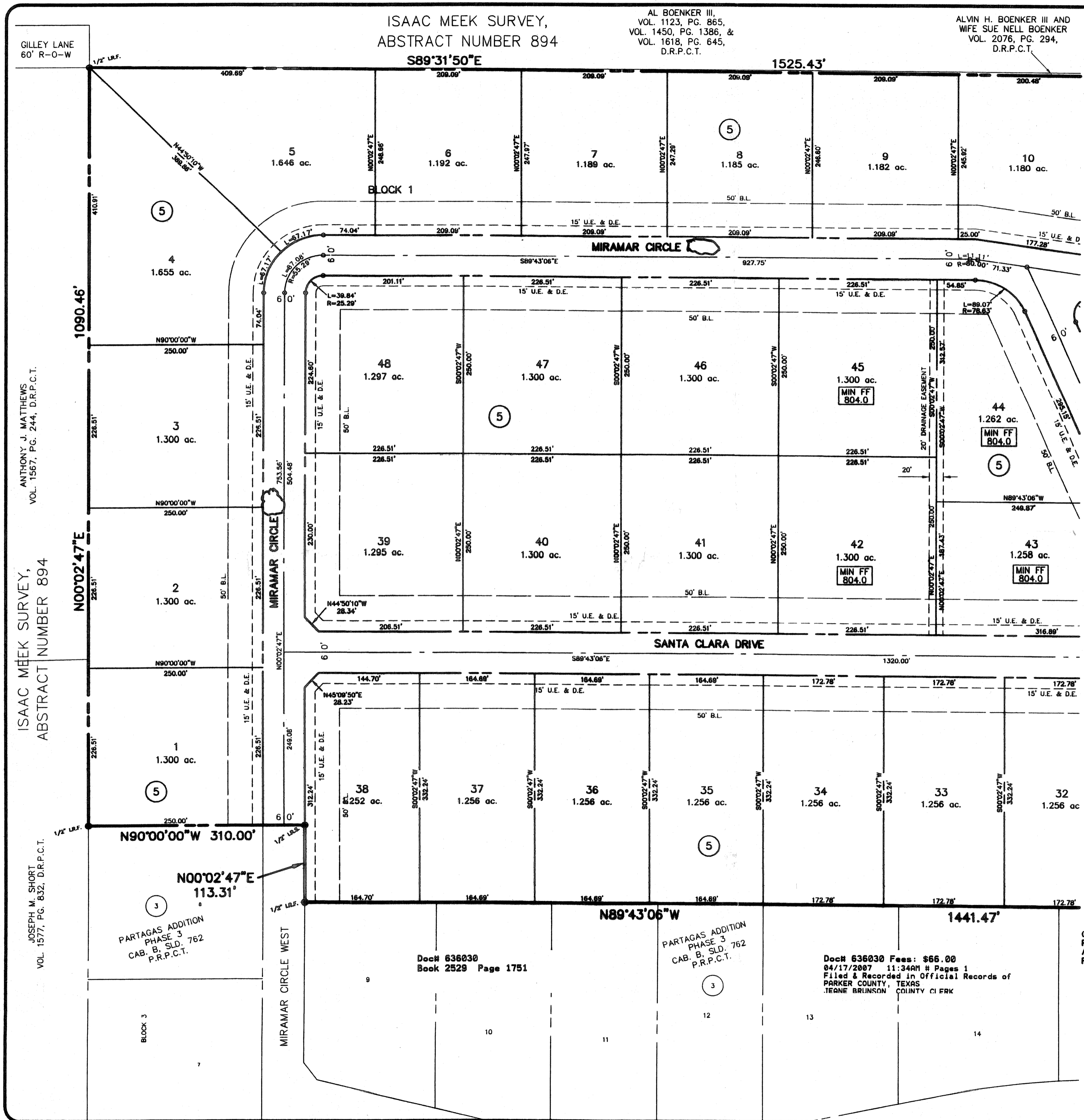
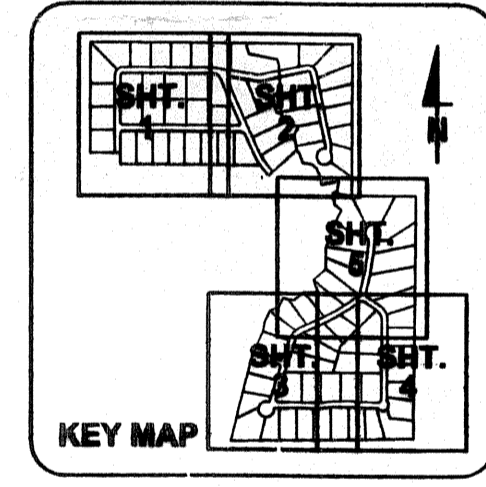
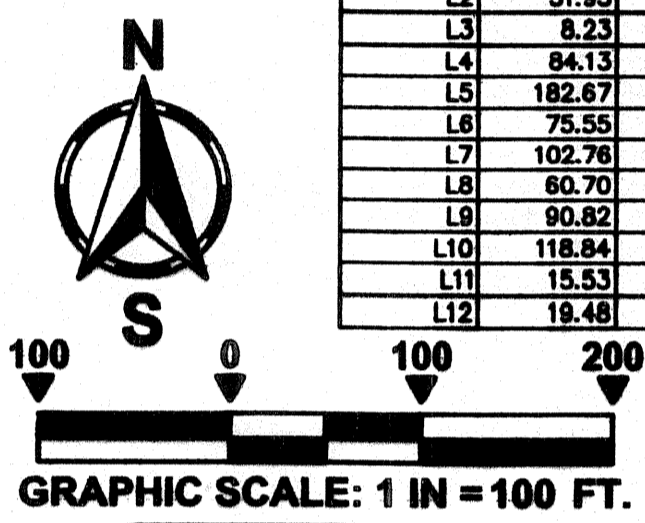


C-556



LINE	LENGTH	BEARING
L1	11.50	N88°53'51"E
L2	51.95	N54°56'13"E
L3	8.23	N25°25'32"W
L4	84.13	N09°54'13"E
L5	182.67	S72°41'04"W
L6	75.55	N04°35'43"W
L7	102.78	N27°23'15"W
L8	60.70	S50°47'24"W
L9	90.82	N82°14'23"W
L10	118.84	N21°33'52"W
L11	15.53	S84°08'59"W
L12	19.48	N10°08'58"W



Corrected
 .REMOVED
 DIRECTION

ACCT. NO: 16075
 SCH. DIST: AZ
 CITY: CO
 MAP NO.: M-9

CORRECTED FINAL PLAT
PARTAGAS ADDITION
LOTS 1-47, BLOCK 4
LOTS 1-48 BLOCK 5
PHASE FOUR

BEING 152.753 ACRES OF LAND IN THE:
 ISAAC H. MEEK ABSTRACT NUMBER 894,
 MRS. E. A. CLIFTON ABSTRACT NUMBER 1726,
 T. & P. RR. SURVEY, ABSTRACT NUMBER 1432,
 PARKER COUNTY, TEXAS

FEBRUARY 9, 2007



OWNER / DEVELOPER PARTAGAS PROPERTIES, LTD. 3916 ANN ARBOR COURT FORT WORTH, TEXAS 76109

SURVEYOR TEXAS GEOSPATIAL 117 JOHN ST. ALEDO, TEXAS 76008 (817) 441-6199 (817) 441-6805 fax

ORIGINAL PLAT RECORDED CABINET B, SLIDE 312

CivilSolutions Inc
 Engineers Surveyors Planners
 P.O. Box 100247, Fort Worth, Texas, 76185
 (817) 423-0060 (817) 346-0520 Fax

Z:\cnc Projects\2005\06-002 Partagas\dwg\CORR FF4.dwg, 2/13/2007 4:05:23 PM