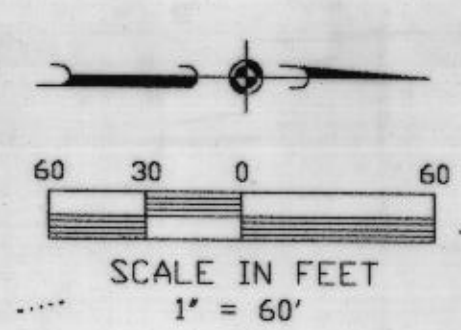
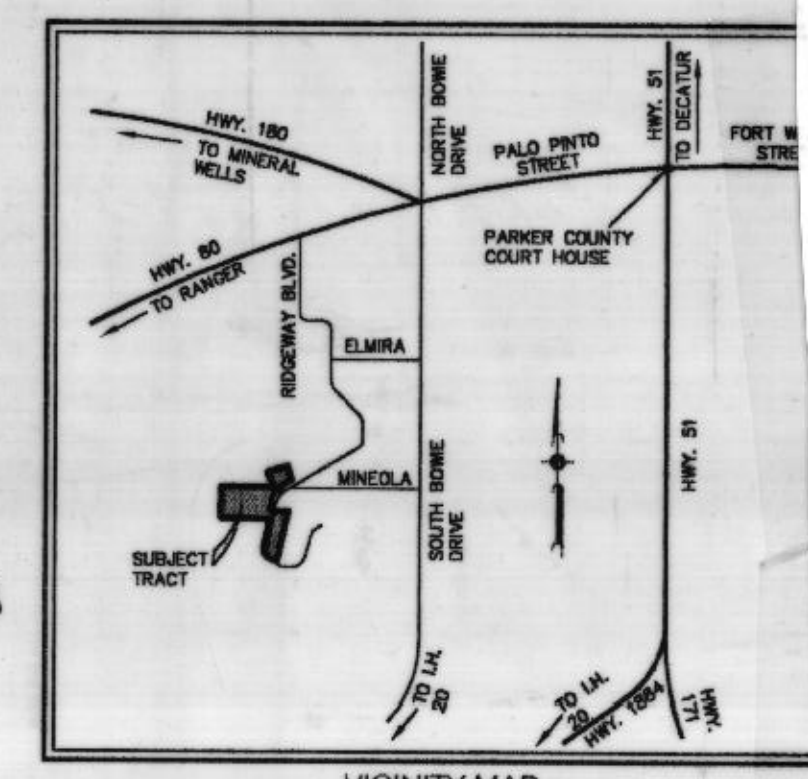
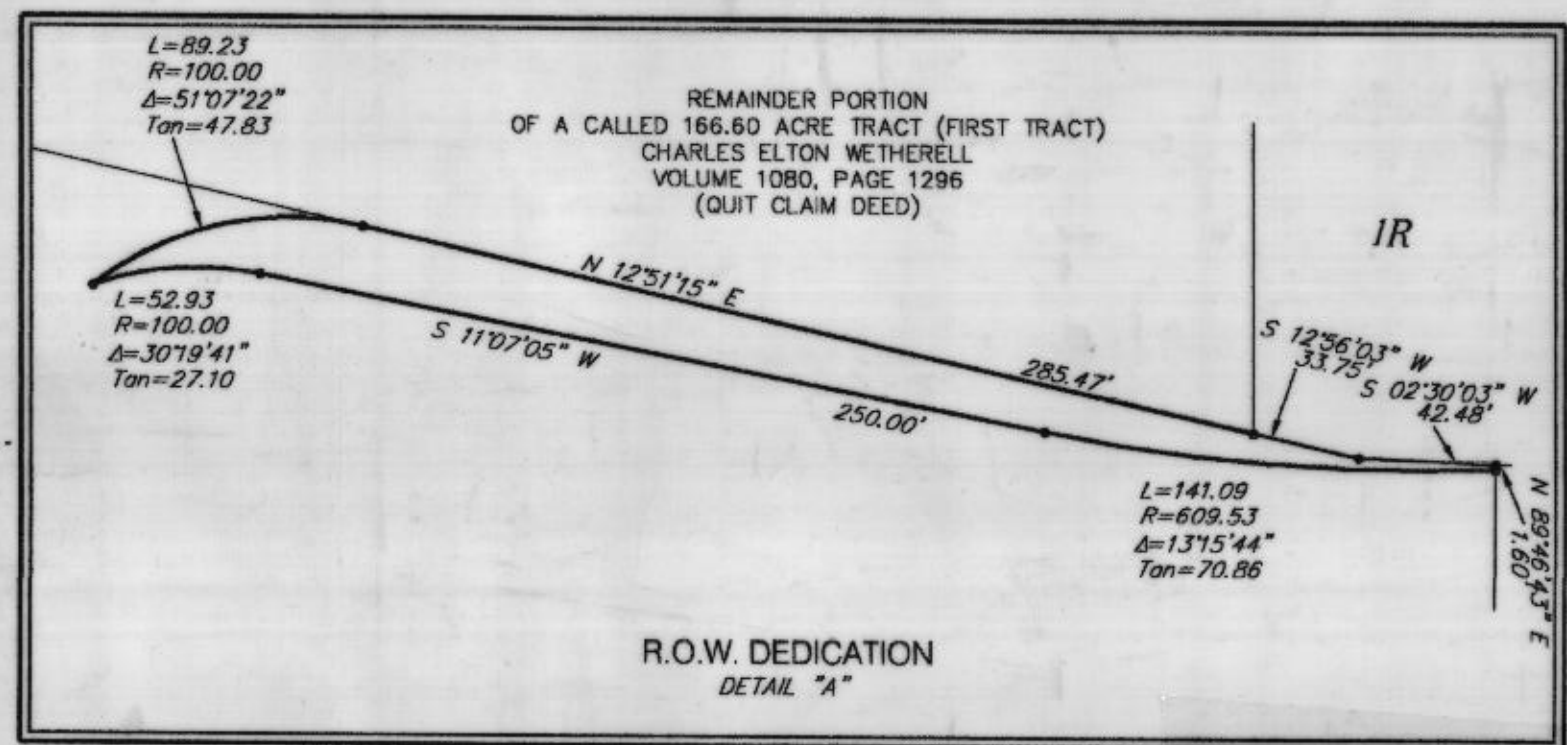
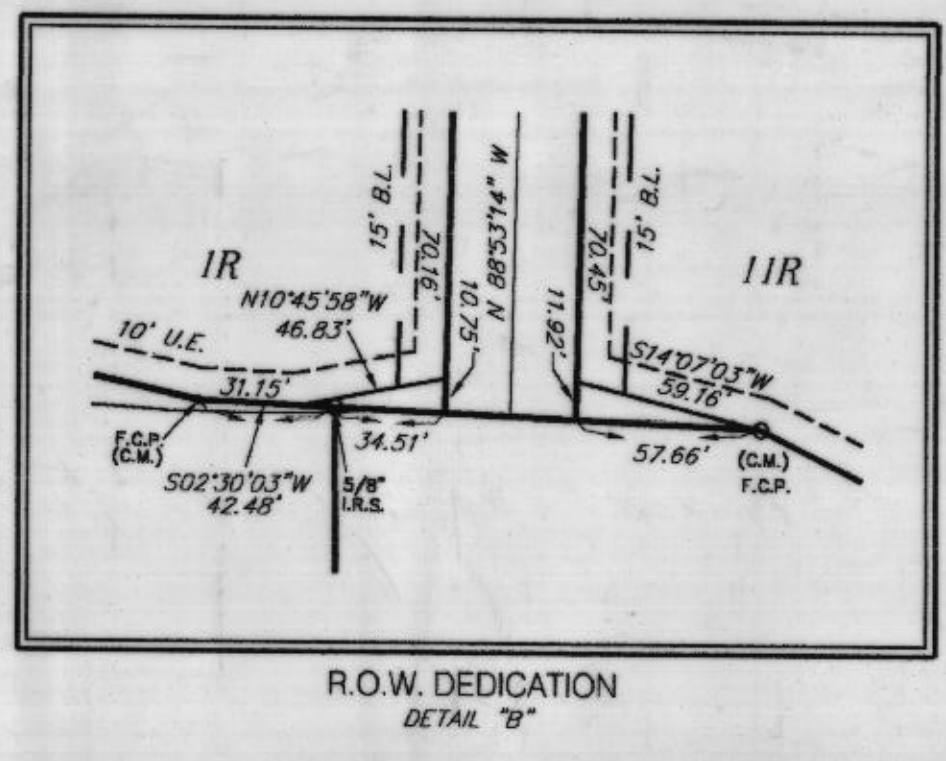


LEGEND

B.L.	BUILDING LINE
U.E.	UTILITY EASEMENT
I.R.F.	IRON ROD FOUND
I.R.S.	IRON ROD SET (WITH CAP MARKED "VMA")
F.C.P.	FENCE CORNER POST
C.M.	CONTROLLING MONUMENT
D. & U.E.	DRAINAGE & UTILITY EASEMENT
..... LOT, STREET R.O.W. AND ALLEY R.O.W. LINE OF MINERAL HEIGHTS ADDITION	
——— EDGE OF ASPHALT	
▨ AREA OF DEDICATED R.O.W.	
▨ AREA OF R.O.W. TO BE ABANDONED PER THIS RECORDED PLAT.	



B 694

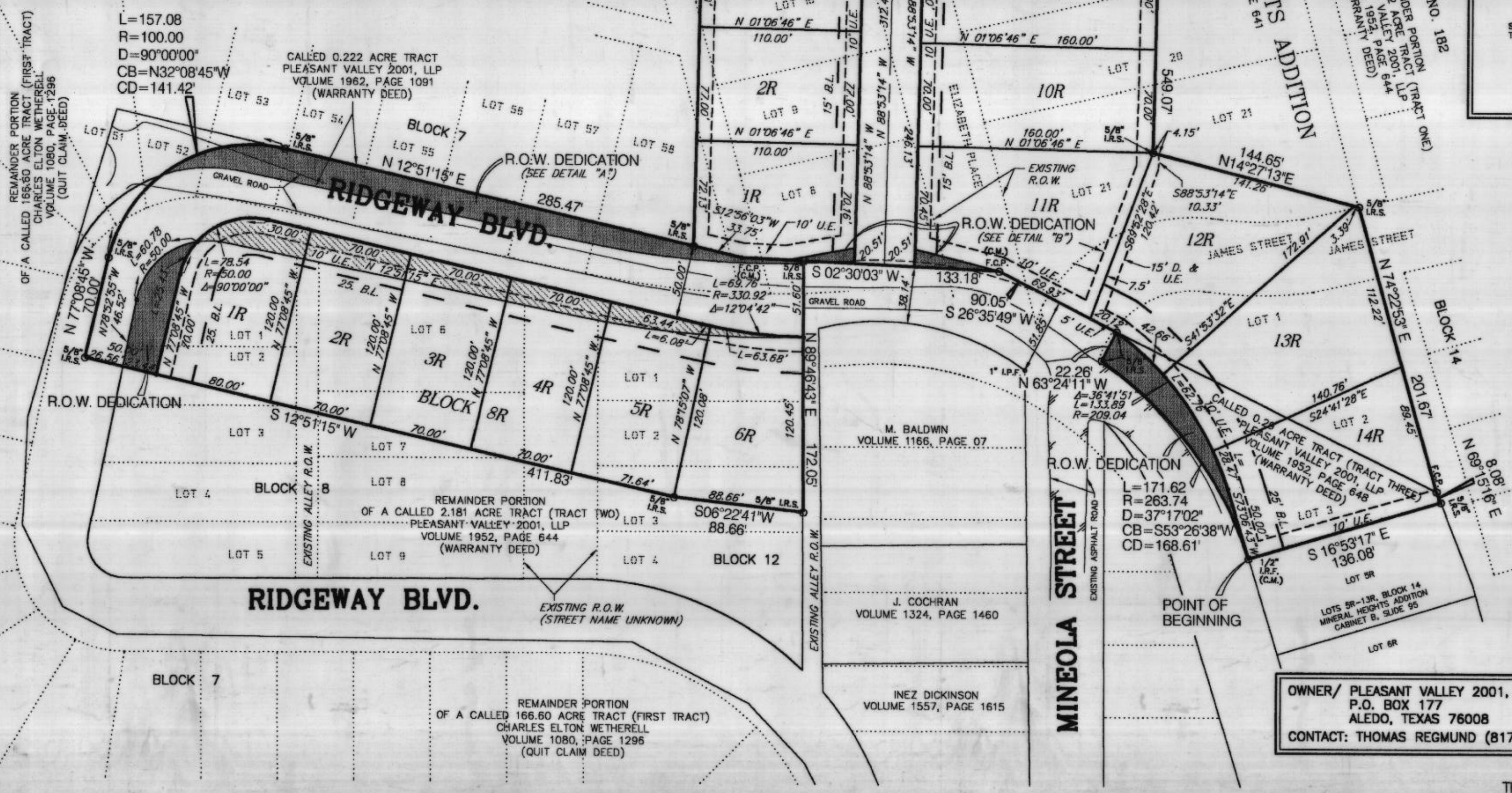


Doc 00446221 Bk OR 2011 Vol 14 Pg 14

FILED AND RECORDED
OFFICIAL PUBLIC RECORDS
On May 15, 2002 at 03:21P

Document Number: 00446221
Amount: .00
By: Leslie Coufal

STATE OF TEXAS COUNTY OF PARKER
I hereby certify that this instrument was
filed on the date and time stamped herein by me
and was duly recorded in the volume and page
of the public records of Parker County
as stamped herein by me.
May 15, 2002
JERRI BRUNSON, COUNTY CLERK
PARKER COUNTY



FINAL PLAT
OF
PLEASANT VALLEY PHASE I

OUT OF THE
J.F. BANDY SURVEY, ABSTRACT NO. 182
CITY OF WEATHERFORD, PARKER COUNTY, TEXAS
6.403 ACRES/ 20 LOTS
BEING A REPLAT
OF
LOTS 1 THRU 3, BLOCK 13
A PORTION OF LOTS 8 THRU 21, BLOCK 11
A PORTION OF LOTS 1 THRU 3, BLOCK 12
AND A PORTION OF LOTS 1, 2, 5, AND 7, BLOCK 8
AND A PORTION OF LOT 58, BLOCK 7
OF
MINERAL HEIGHTS ADDITION

ENGINEER/SURVEYOR: **vima**
vosska+miscoe+associates
civil engineering-planting-landscape architecture-surveying
200 east abram
arlington, texas 76010
817-488-1871
fax: 817-274-8787
e-mail: vma@vma-inc.com

OWNER/ PLEASANT VALLEY 2001, LLP
P.O. BOX 177
ALEDO, TEXAS 76008
CONTACT: THOMAS REGMUND (817) 441-7812