

Doc 00497797 Bk OR Vol 2161 Pg 34

FILED AND RECORDED
OFFICIAL PUBLIC RECORDS
On Oct 22, 2003 at 09:40AM

Document Number: 00497797

Amount \$6.00

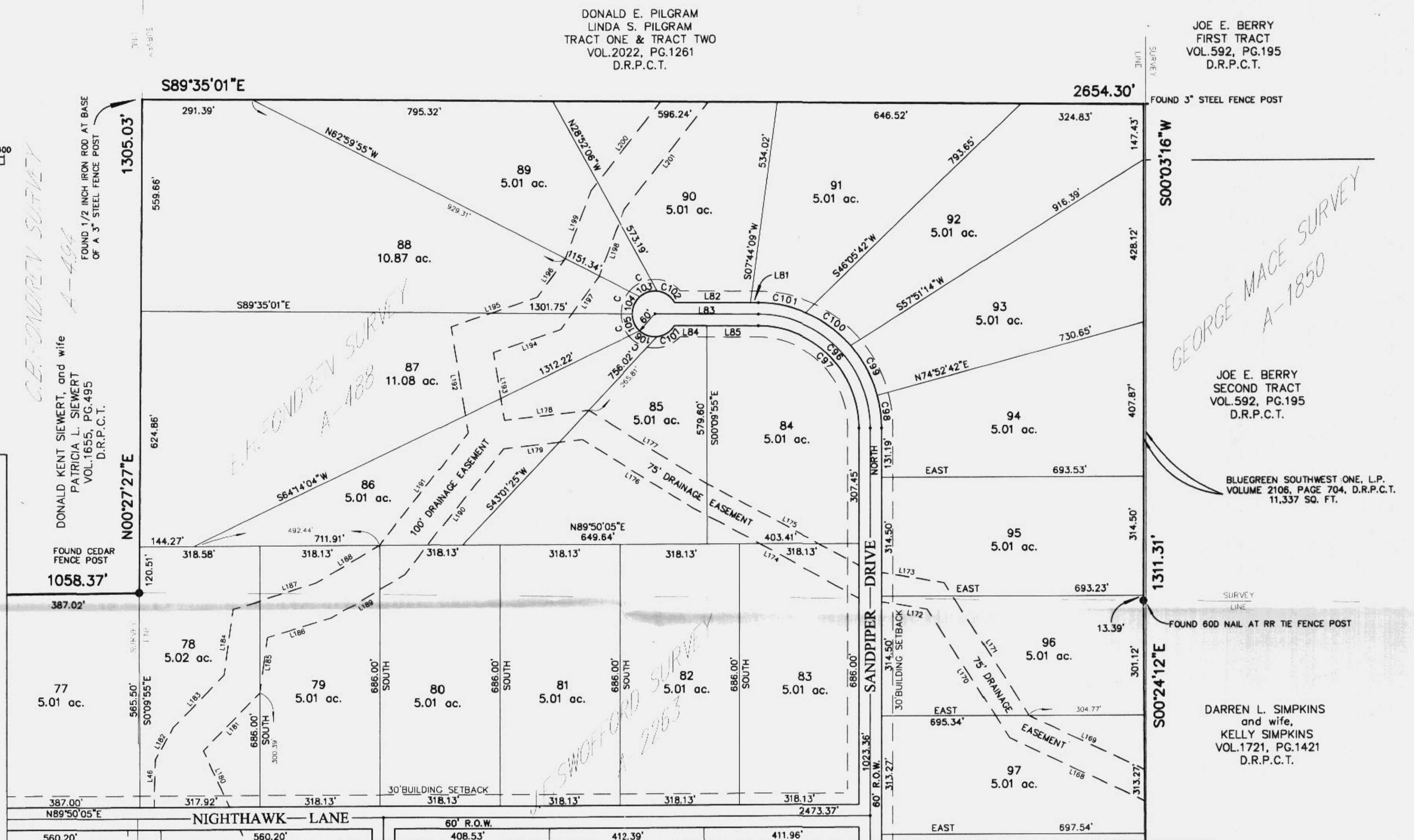
By Laura Hanna

STATE OF TEXAS COUNTY OF PARKER
I hereby certify that this instrument was
filed on the date and time stamped hereon by me
and was duly recorded in the volume and page
of the named records of: Parker County
as stamped hereon by me.

Oct 22, 2003

JANE BUNSON, COUNTY CLERK
PARKER COUNTY

SEE SHEET 2



NUM	DISTANCE	BEARING
L81	21.13'	S89°35'01"E
L82	201.61'	S89°35'01"E
L83	274.70'	S89°35'01"E
L84	85.71'	S89°35'01"E
L85	137.04'	S89°35'01"E

NUM	DELTA	ARC	RADIUS	BEARING	DISTANCE
C96	89°34'59"	469.06'	300.00'	N44°47'31"W	422.72'
C97	89°34'59"	422.15'	270.00'	N44°47'31"W	380.45'
C98	15°07'16"	87.09'	330.00'	N07°33'40"W	86.84'
C99	26°02'36"	150.00'	330.00'	N28°08'37"W	148.71'
C100	26°02'36"	150.00'	330.00'	N54°11'13"W	148.71'
C101	22°22'29"	128.87'	330.00'	N78°23'46"W	128.05'
C102	54°30'25"	57.08'	60.00'	N56°50'13"W	54.95'
C103	47°44'47"	50.00'	60.00'	S72°02'10"W	48.57'
C104	47°44'47"	50.00'	60.00'	S24°17'23"W	48.57'
C105	47°44'47"	50.00'	60.00'	S23°27'25"E	48.57'
C106	47°44'47"	50.00'	60.00'	S71°12'12"E	48.57'
C107	54°30'25"	57.08'	60.00'	N57°40'12"E	54.95'

DRAINAGE EASEMENT			DRAINAGE EASEMENT		
NUM	DISTANCE	BEARING	NUM	DISTANCE	BEARING
L183	250.09'	N00°09'55"W	L183	191.19'	N44°41'06"E
L45	126.60'	N01°30'27"E	L184	176.37'	N07°53'39"E
L46	108.81'	S24°42'09"E	L185	145.65'	N07°53'39"E
L62	394.83'	S64°58'00"E	L186	176.17'	N73°06'52"E
L168	337.48'	S64°58'00"E	L187	228.47'	N73°06'52"E
L169	403.38'	S32°42'45"E	L188	196.42'	N59°48'03"E
L170	415.28'	S32°42'45"E	L189	227.37'	N59°48'03"E
L171	122.71'	S80°57'30"E	L190	424.03'	N37°58'29"E
L172	168.24'	S80°57'30"E	L191	379.88'	N37°58'29"E
L173	501.32'	S61°43'30"E	L192	284.61'	N9°03'37"W
L174	486.21'	S61°43'30"E	L193	181.80'	N9°03'37"W
L175	347.08'	N58°03'17"W	L194	187.97'	N71°22'21"E
L176	370.88'	N58°03'17"W	L195	241.09'	N71°22'21"E
L177	225.80'	N83°26'27"E	L196	125.73'	N36°28'43"E
L178	209.98'	N83°26'27"E	L197	170.84'	N36°28'43"E
L179	164.84'	S24°42'09"E	L198	189.32'	N20°54'10"E
L180	212.19'	N44°41'06"E	L199	190.91'	N20°54'10"E
L181	97.90'	N29°18'08"E	L200	300.17'	N38°15'22"E
L182			L201	362.59'	N38°15'22"E

OWNER & DEVELOPER:

bluegreen southwest

BLUEGREEN SOUTHWEST ONE, L.P.
3860 W. Northwest Highway Suite 230
Dallas, Texas 75220

ENGINEER & SURVEYOR:

Baird, Hampton & Brown, Inc.
Engineering & Surveying
810 Highway 377 East, Ste. 5
Greenville, TX 76048 Tel: (817) 757-7700 Fax: (817) 757-7704 E-Mail: gsbaird@bhbc.com

Plat Cab C-57

JOE E. BERRY
FIRST TRACT
VOL.592, PG.195
D.R.P.C.T.

FOUND 3" STEEL FENCE POST

300°03'16"W

GEORGE MACE SURVEY
A-1850

JOE E. BERRY
SECOND TRACT
VOL.592, PG.195
D.R.P.C.T.

BLUEGREEN SOUTHWEST ONE, L.P.
VOLUME 2106, PAGE 704, D.R.P.C.T.
11,337 SQ. FT.

SURVEY LINE

FOUND 60D NAIL AT RR TIE FENCE POST

300°24'12"E

DARREN L. SIMPKINS
and wife,
KELLY SIMPKINS
VOL.1721, PG.1421
D.R.P.C.T.

ACCT. NO: 16480

SCH. DIST: PE

CITY: CO

MAP NO.: E-9

FINAL PLAT
QUAIL SPRINGS RANCH

920.74 ACRES
232 SINGLE FAMILY LOTS
PARKER COUNTY, TEXAS

October 22, 2003

SHEET 5 OF 8