

FILED AND RECORDED
OFFICIAL PUBLIC RECORDS
On Oct 22, 2003 at 09:46AM

Document Number: 00497797

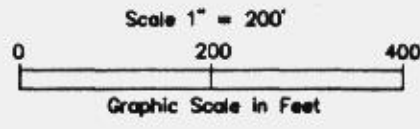
Amount: \$6.00

By: Laura Hanna

STATE OF TEXAS COUNTY OF PARKER
I hereby certify that this instrument was filed on the date and time stamped hereon by me and was duly recorded in the volume and page of the named records of: Parker County as stamped hereon by me.

Oct 22, 2003

JENNIE HANSON, COUNTY CLERK
PARKER COUNTY

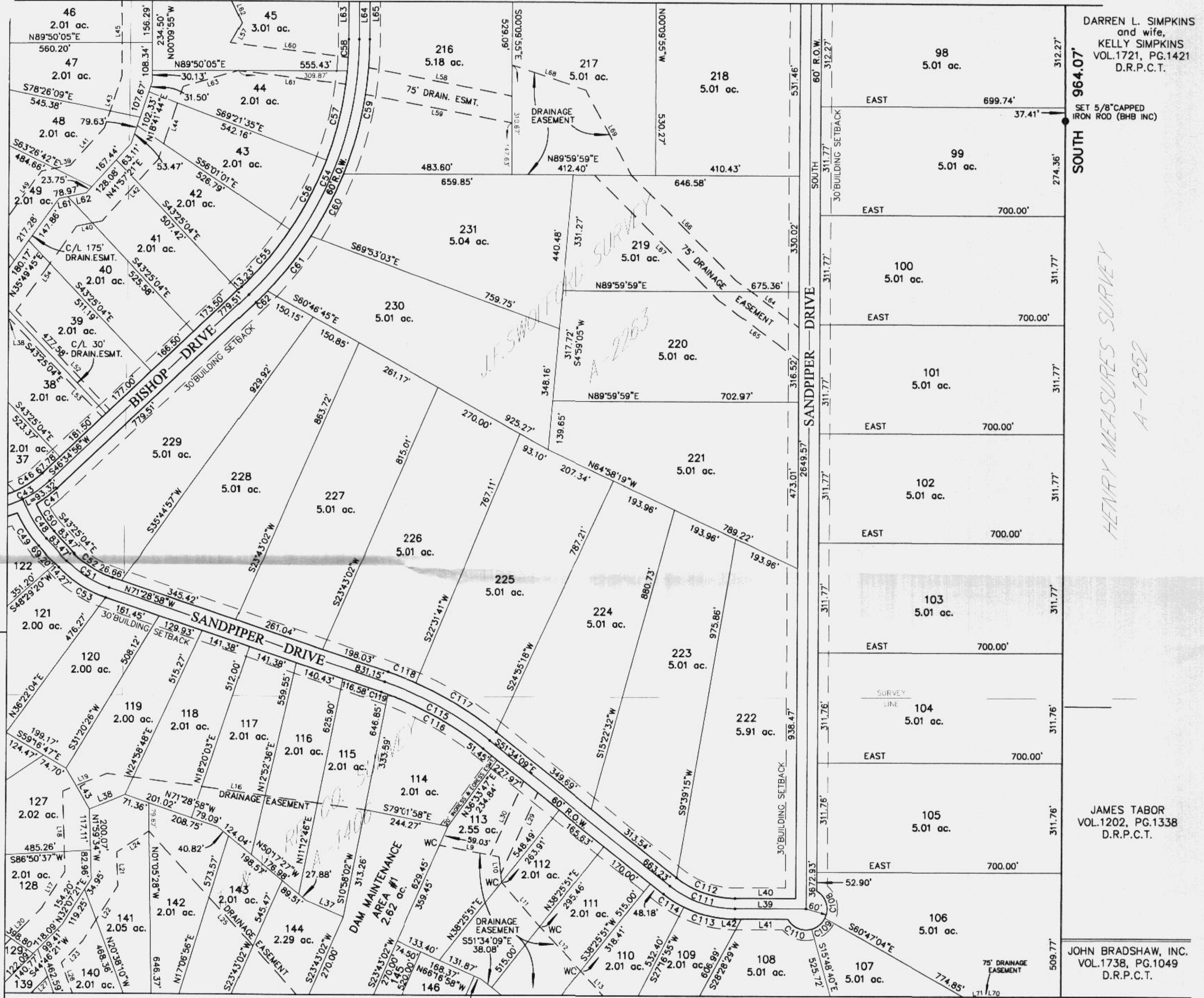


NUM	DELTA	ARC	RADIUS	BEARING	DISTANCE
C43	45°27'39"	238.03'	300.00'	N69°18'46"E	231.84'
C46	20°12'12"	95.21'	270.00'	N56°41'02"E	94.71'
C47	12°36'27"	72.62'	330.00'	N52°53'10"E	72.47'
C48	15°47'17"	82.67'	300.00'	S35°31'25"E	82.41'
C49	15°52'58"	91.48'	330.00'	S35°28'35"E	91.19'
C50	15°40'41"	73.88'	270.00'	S35°34'43"E	73.65'
C51	28°03'53"	146.95'	300.00'	S57°27'01"E	145.48'
C52	28°03'53"	132.25'	270.00'	S57°27'01"E	130.93'
C53	28°03'53"	161.64'	330.00'	S57°27'01"E	160.03'
C54	46°34'57"	813.02'	1000.00'	N23°17'27"E	790.81'
C55	12°36'54"	213.57'	970.00'	N40°16'28"E	213.14'
C56	13°20'29"	225.87'	970.00'	N27°17'47"E	225.36'
C57	15°21'36"	260.04'	970.00'	N12°56'44"E	259.27'
C58	5°15'56"	89.15'	970.00'	N2°37'57"E	89.12'
C59	21°47'02"	391.61'	1030.00'	N10°53'30"E	389.26'
C60	11°08'05"	200.17'	1030.00'	N27°21'04"E	199.86'
C61	11°08'05"	200.17'	1030.00'	N38°29'10"E	199.86'
C62	2°31'42"	45.46'	1030.00'	N45°19'04"E	45.45'
C108	86°26'34"	90.52'	60.00'	N16°46'44"W	82.18'
C109	47°44'47"	50.00'	60.00'	N50°18'56"E	48.57'
C110	75°48'38"	79.39'	60.00'	S67°54'21"E	73.72'
C111	38°25'52"	201.23'	300.00'	S70°47'05"E	197.47'
C112	38°25'52"	181.10'	270.00'	S70°47'05"E	177.73'
C113	26°18'48"	151.55'	330.00'	S76°50'37"E	150.23'
C114	12°07'03"	69.79'	330.00'	S57°37'41"E	69.66'
C115	19°54'48"	347.56'	1000.00'	N61°31'33"W	345.81'
C116	18°43'51"	317.11'	970.00'	N60°56'05"W	315.70'
C117	15°02'27"	270.39'	1030.00'	N59°05'23"W	269.62'
C118	4°52'20"	87.59'	1030.00'	N69°02'47"W	87.57'
C119	1°10'57"	20.02'	970.00'	N70°53'29"W	20.02'

DRAINAGE EASEMENT					
WC = Witness Corner 5/8 inch capped iron rod set (BHB INC)					
NUM	DISTANCE	BEARING	NUM	DISTANCE	BEARING
L9	173.72'	S79°10'34"E	L41	144.34'	N41°57'21"E
L10	73.54'	S5°53'57"E	L42	238.05'	N41°57'21"E
L11	168.61'	S40°47'08"E	L43	154.75'	N18°41'44"E
L12	171.54'	S43°52'51"E	L44	219.84'	N18°41'44"E
L13	189.77'	S42°38'07"E	L45	250.09'	N0°09'55"W
L16	743.45'	S82°23'44"E	L49	202.95'	N35°49'45"E
L17	122.88'	N32°07'21"E	L52	391.36'	S43°25'04"E
L18	229.80'	N1°59'34"W	L53	385.66'	S43°25'04"E
L19	136.12'	S68°14'02"W	L54	295.25'	N35°49'45"E
L20	152.34'	S44°46'21"W	L57	65.75'	S29°31'11"W
L21	98.17'	N1°59'34"W	L58	416.43'	N79°17'13"W
L22	185.53'	N32°07'21"E	L59	430.85'	N79°17'13"W
L23	87.27'	S44°46'21"W	L60	340.17'	S83°12'52"E
L24	109.76'	N56°31'01"E	L61	307.59'	S83°12'52"E
L25	664.23'	S42°21'11"E	L62	108.81'	S24°42'09"E
L26	379.99'	S20°26'51"E	L63	164.25'	S74°03'28"W
L27	118.96'	S44°46'21"W	L64	222.53'	N53°07'48"W
L29	254.70'	N24°14'11"E	L65	283.97'	N53°07'48"W
L30	230.25'	N24°14'11"E	L66	423.57'	N45°12'14"W
L38	86.90'	N35°49'45"E	L67	504.30'	N45°12'14"W
L39	84.25'	N78°26'56"E	L68	223.20'	S71°58'49"E
L40	73.68'	N78°26'56"E	L69	275.76'	S28°48'33"E

SEE SHEET 3

SEE SHEET 3



NUM	DISTANCE	BEARING
L37	116.49'	N66°16'58"W
L38	109.46'	S68°14'02"W
L39	201.57'	EAST
L40	171.57'	EAST
L41	131.34'	EAST
L42	18.27'	EAST
L43	133.68'	N30°41'26"W
L61	25.00'	N78°26'56"E
L62	53.97'	N78°26'56"E
L63	145.49'	SOUTH
L64	175.58'	SOUTH
L65	145.66'	SOUTH

SEE SHEET 7

OWNER & DEVELOPER:
bluegreen southwest
BLUEGREEN SOUTHWEST ONE, L.P.
3860 W. Northwest Highway Suite 230
Dallas, Texas 75220

ENGINEER & SURVEYOR:
Baird, Hampton & Brown, Inc.
Engineering & Surveying
918 Highway 377 East, Ste. 5 Orem, UT 84057 Tel: (801) 225-7700 Fax: (801) 225-7764 E-Mail: gpb@bhbc.com

ACCT. NO: 116480
SCH. DIST.: PE
CITY: CO
MAP NO.: E-9

FINAL PLAT
QUAIL SPRINGS RANCH
920.74 ACRES
232 SINGLE FAMILY LOTS
PARKER COUNTY, TEXAS
October 22, 2003
SHEET 6 OF 8

Plat Call C-57