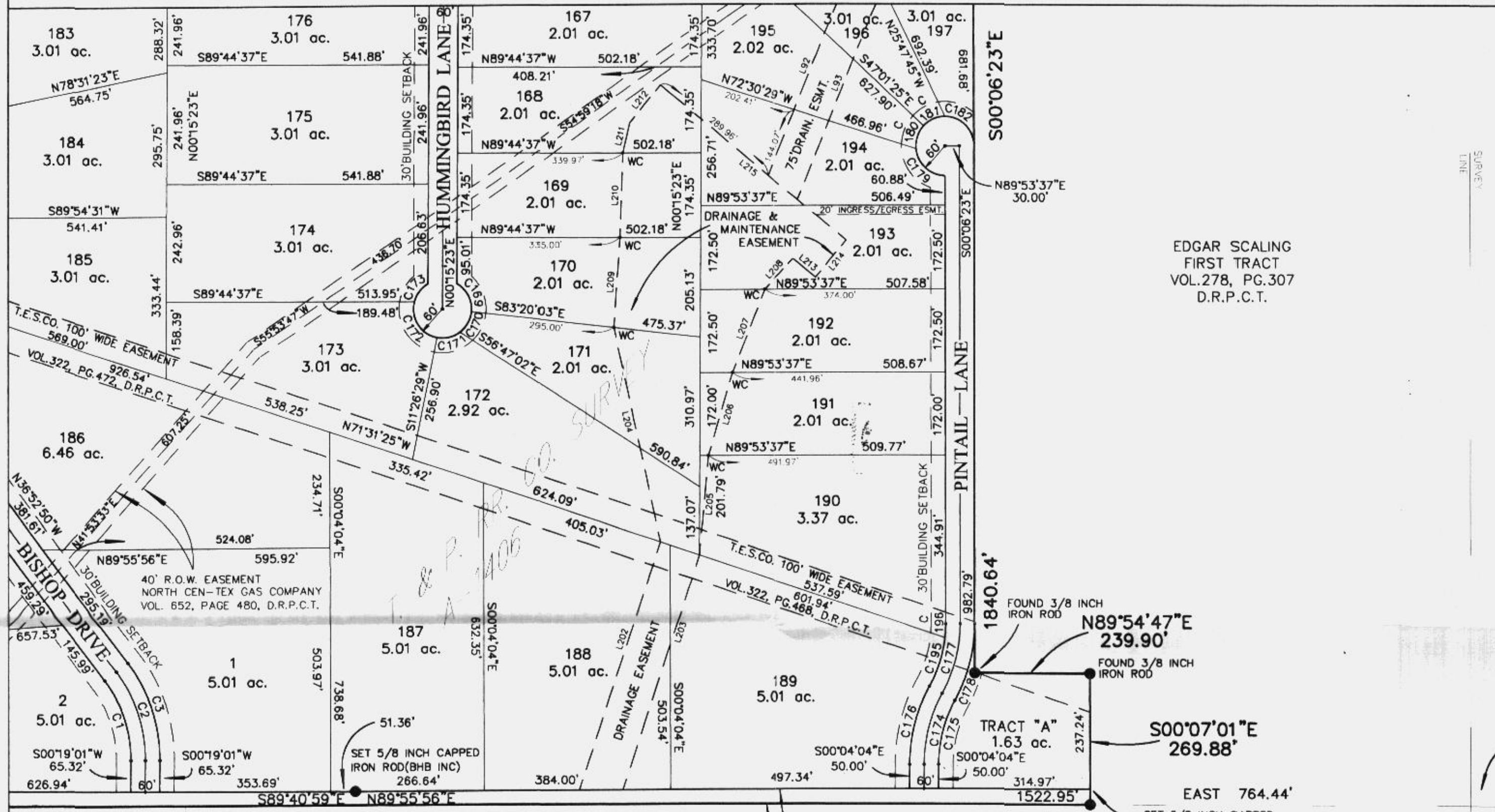


SEE SHEET 7

SEE SHEET 4



EDGAR SCALING
FIRST TRACT
VOL. 278, PG. 307
D.R.P.C.T.

T. & P. R.R. CO. SURVEY
A-1487

SOUTHEAST CORNER OF THE
T. & P. R.R. CO. SURVEY, A-1406
(PER DEED CALL)

Doc 00497797 Bk DR Vol 2161 Pg 34

FILED AND RECORDED
OFFICIAL PUBLIC RECORDS
Oct 22, 2003 at 09:48A

Document Number: 00497797

Acct: 56.00

By Laura Hanna

STATE OF TEXAS COUNTY OF PARKER
I hereby certify that this instrument was
filed on the date and time stamped hereon by me
and was duly recorded in the volume and page
of the named records of Parker County
as stamped hereon by me.

Oct 22, 2003

JESSE BARNEDA, COUNTY CLERK
PARKER COUNTY

PRECINCT ROAD
(VARIABLE WIDTH R.O.W.)

AREA DEDICATED FOR
RIGHT OF WAY PURPOSES
(79,375 SQ. FT. OR 1.82 AC.)

POINT OF BEGINNING
FOUND 60D NAIL IN ASPHALT

DRAINAGE EASEMENT		
NUM	DISTANCE	BEARING
L92	469.90'	S22°08'24"W
L93	501.45'	S22°08'24"W
L202	537.40'	N18°12'53"E
L203	508.76'	N18°12'53"E
L204	452.18'	N12°15'47"W
L205	202.69'	N5°17'32"E
L206	179.12'	N16°06'22"E
L207	185.40'	N21°23'48"E
L208	85.44'	N43°07'00"E
L209	185.38'	N3°59'25"E
L210	174.43'	N1°53'18"E
L211	62.58'	N13°24'14"E
L212	100.00'	S39°37'20"W
L213	60.65'	N50°22'40"W
L214	100.00'	S39°37'20"W
L215	500.00'	N50°22'40"W

NUM	DELTA	ARC	RADIUS	BEARING	DISTANCE
C1	37°11'51"	175.29'	270.00'	N18°16'55"W	172.23'
C2	37°11'51"	194.77'	300.00'	N18°16'55"W	191.36'
C3	37°11'51"	214.24'	330.00'	N18°16'55"W	210.50'
C169	64°51'43"	67.92'	60.00'	N27°18'45"W	64.35'
C170	47°44'47"	50.00'	60.00'	N28°59'30"E	48.57'
C171	47°44'47"	50.00'	60.00'	N76°44'18"E	48.57'
C172	94°44'56"	99.22'	60.00'	S32°00'51"E	88.30'
C173	44°53'45"	47.02'	60.00'	S37°48'31"W	45.82'
C174	28°54'58"	151.41'	300.00'	S14°23'25"W	149.80'
C175	28°54'58"	136.26'	270.00'	S14°23'25"W	134.82'
C176	28°54'58"	166.55'	330.00'	S14°23'25"W	164.78'
C177	28°57'18"	151.61'	300.00'	N14°22'16"E	150.00'
C178	28°57'18"	166.77'	330.00'	N14°22'16"E	165.00'
C179	84°52'12"	88.88'	60.00'	S47°40'17"E	80.97'
C180	47°44'47"	50.00'	60.00'	S18°38'12"W	48.57'
C181	47°44'47"	50.00'	60.00'	S66°23'00"W	48.57'
C182	89°38'13"	93.87'	60.00'	N44°55'30"W	84.58'
C195	22°57'35"	108.20'	270.00'	N17°22'07"E	107.47'
C196	5°59'42"	28.25'	270.00'	N2°53'28"E	28.24'

OWNER & DEVELOPER:
bluegreen
southwest
BLUEGREEN SOUTHWEST ONE, L.P.
3860 W. Northwest Highway Suite 230
Dallas, Texas 75220

ENGINEER & SURVEYOR:
Baird, Hampton & Brown, Inc.
Engineering & Surveying
819 Highway 377 East, Ste. 5 Overbury, TX 76048 Tel: (817) 578-7700 Fax: (817) 578-7704 E-Mail: gbray@bh&b.com

Plat Call C-57

FINAL PLAT
QUAIL SPRINGS RANCH

920.74 ACRES
232 SINGLE FAMILY LOTS
PARKER COUNTY, TEXAS

October 22, 2003
SHEET 8 OF 8

ACCT. NO.: 16480
SCH. DIST.: PE
CITY: CO
MAP NO.: E-9

J.S. McCUTCHEN SURVEY
A-2749