

DoS 00557290 Bk Vol 1 1554 Pg 2330

FILED AND RETURNED TO OFFICE OF PUBLIC RECORDS ON MAY 19, 2005 AT 10:26 AM

Record Number: 0632729

Amount: \$6.00

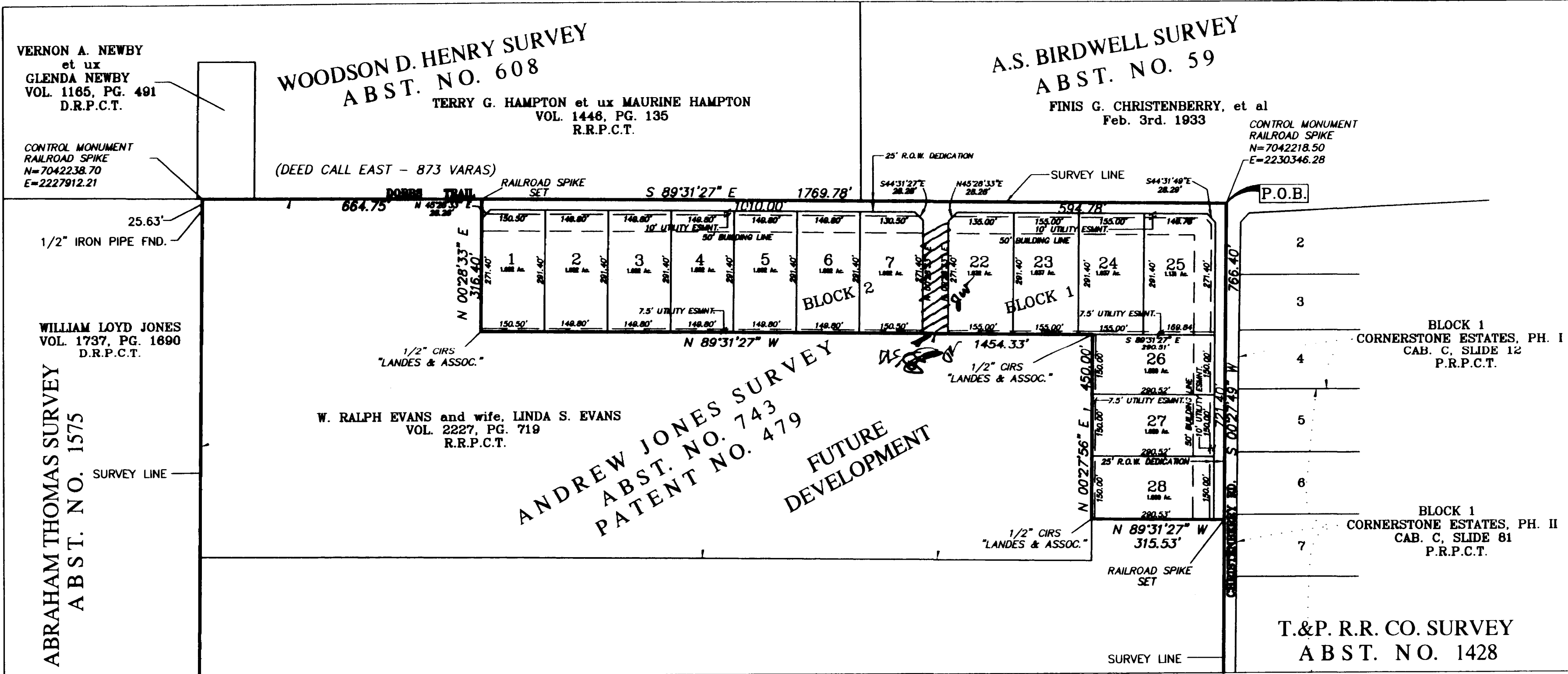
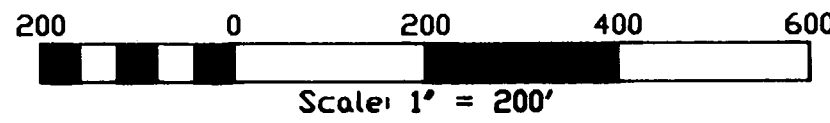
Fee: 1.00

STATE OF TEXAS COUNTY OF PARKER I hereby certify that this instrument was filed in this office and that stamped hereon by me was the first received in the office and that of the same records of Parker County as stated herein by me.

May 19, 2005

JANE HANSON, COUNTY CLERK PARKER COUNTY

Plat Cab C-264



NOTES:

1. All perimeter monuments are 1/2 inch iron rods set with plastic caps stamped "LANDES & ASSOC." (Unless otherwise noted).

2. The bearings and coordinate values shown hereon are NAD 1983 State Plane Grid bearings and coordinates for the Texas North Central Zone 4202 using G.P.S. static observations. The datum was processed by the National Geodetic Survey, Jan. 16, 2004, using Base Station Denton C.O.R.S. A.R.P., Arlington R.R.P.2 C.O.R.S. A.R.P. & Dallas C.O.R.S. A.R.P. The combined scale factors for this area is 0.99983347.

NOTE:

NONE OF THE PROPERTY SHOWN HEREON LIES WITHIN THE E.T.J. OF ANY CITY.

W. Ralph Evans

W. RALPH EVANS

THIS PLAT WAS FILED IN CAB. _____, SLIDE _____, DATE _____.

A FINAL PLAT OF
LOTS 22-28, BLOCK 1 & LOTS 1-7, BLOCK 2
REMINGTON PARK ESTATES PHASE I

AN ADDITION TO PARKER COUNTY, TEXAS, AND BEING A PORTION OF THE ANDREW JONES SURVEY, ABSTRACT NO. 743, AND CONTAINING 16.406 ACRES OF LAND.

ACCT. NO.: 16645
 SCH. DIST.: 3F
 CITY: CO
 MAP NO.: L-5

SHEET 1 OF 2

REV: 05/19/05
 DATE: 05/09/05

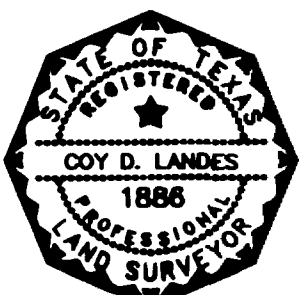
#04010P25

SURVEYOR'S CERTIFICATE

THAT I, COY D. LANDES, DO HEREBY CERTIFY THAT I PREPARED THIS PLAT FROM AN ACTUAL AND ACCURATE SURVEY OF THE LAND AND THAT THE CORNER MONUMENTS SHOWN HEREON WERE FOUND OR SET UNDER MY PERSONAL SUPERVISION.

Coy D. Landes
 COY D. LANDES, R.P.L.S. No. 1888

May 19, 2005
 DATE



LANDES & ASSOCIATES, INC.
 REGISTERED PROFESSIONAL LAND SURVEYORS