

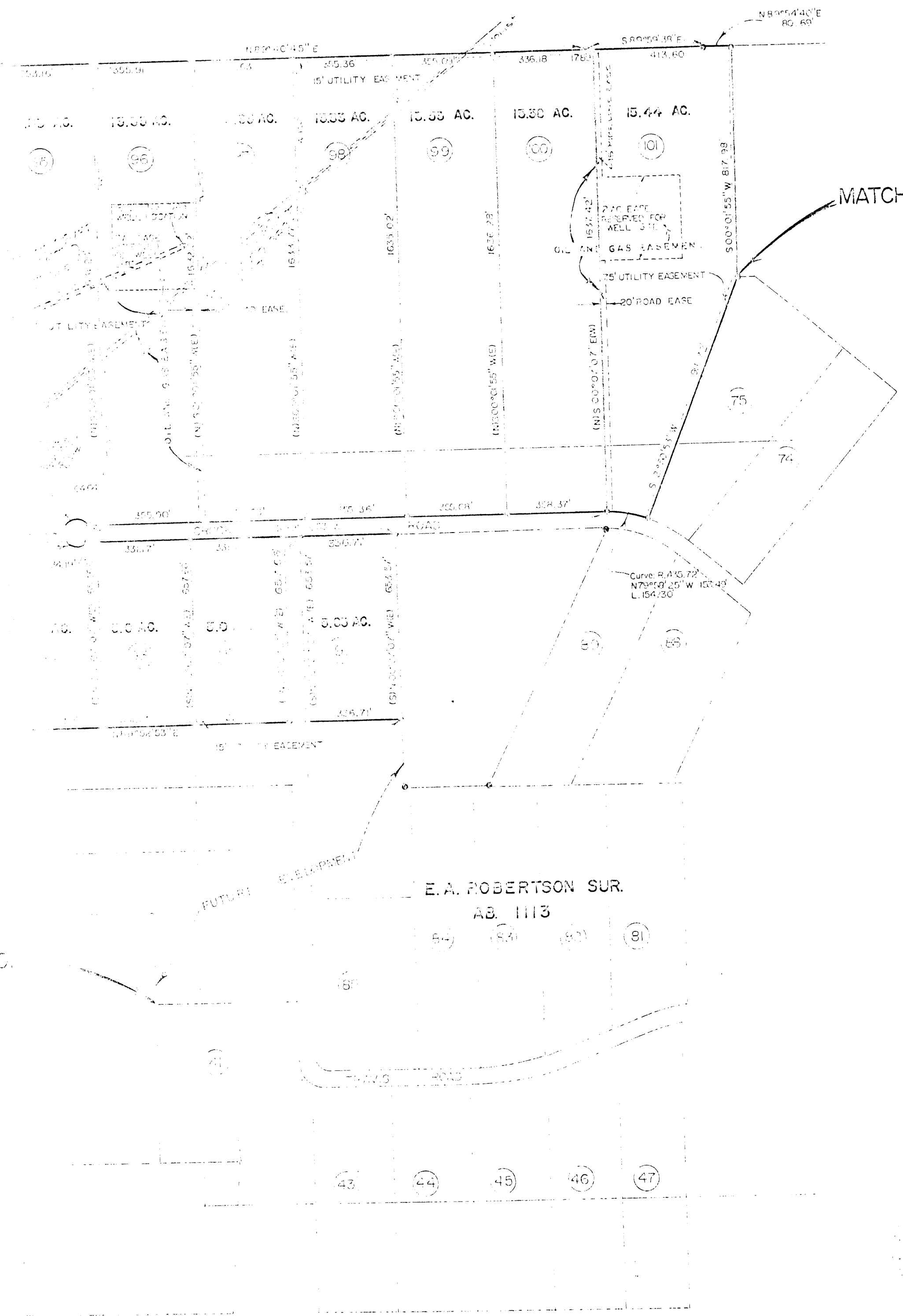
**ROADS AND
EASEMENTS**
AN ADDITION TO PARKER COUNTY, TEXAS

SHEET 2 OF 3 SHEETS

15' UTILITY EASEMENT
(75' on each side of 15' line)

Curve R.A. 50'
N71°45'10"W 99.61'
L124.04'

Curve R.A. 45.72'
N73°47'25"W 157.48'
L154.30'



MATCHPOINT

MATCHPOINT

E.A. ROBERTSON SUR.
AB. 1113

A-425

- SCALE 1" = 40'
- LEGEND
- () CONCRETE PIPE
 - - - - - TREE GROVE
 - () FENCE CORNER
 - x FENCE

HUGHES AND ASSOCIATES
LAND SURVEYING
CIVIL ENGINEERING
LAND PLANNING

1111 COLUMBIA SUITE 100 WEAVER, TEXAS 76798
PHONE 817-834-1111

James Hughes

283