

CURVE CALLS FOR EQUESTRIAN TRAIL EASEMENT

LINE CALLS FOR EQUESTRIAN TRAIL EASEMENT

Table with columns: CURVE, RADIUS, TANGENT, LENGTH, DELTA, DEGREE, CHORD, CH-BEARING, COURSE, BEARING, DISTANCE. Contains curve data for the easement.

Table with columns: COURSE, BEARING, DISTANCE. Contains line call data for the easement.

LEGAL DESCRIPTION 50' x 50' WATER WELL - SITE NO. 11

A parcel of land 50 feet by 50 feet situated in the JACOB WILCOX SURVEY, Abt. No. 1662, Parker County, Texas, as conveyed to Shriners Hospitals For Crippled Children, as recorded in Volume 1441, Page 853, Real Records, Parker County, Texas, and being more particularly described by metes and bounds, as follows:

Commencing at a wood corner post found in the south line of said Shriners Hospitals tract at the northeast corner of that tract of land conveyed to John J. Quinoy and wife, Karen G. Quinoy, as recorded in Volume 1605, Page 322, Real Records, Parker County, Texas, said point of being the northeast corner of the W.K. CLARKE SURVEY, Abt. No. 2194, Parker County, Texas; THENCE N 00° 19' 28" W a distance of 1058.63 feet; THENCE N 89° 40' 32" E a distance of 461.62 feet to a point on a curve to the left; THENCE along said curve to the left having a radius of 970.00 feet and central angle of 18.0 degrees a distance of 304.73 feet; THENCE N 71° 40' 32" E a distance of 229.83 feet to a curve to the right; THENCE along said curve to the right having a radius of 530.00 feet and a central angle of 22° 16' 52" a distance of 208.11 feet; THENCE N 00° 19' 28" W a distance of 382.88 feet; THENCE N 89° 40' 32" E a distance of 19.85 feet to the Well No. 11; THENCE S 89° 40' 32" W a distance of 19.85 feet to the Place of Beginning; THENCE N 00° 19' 28" W a distance of 40.00 feet to a point for a corner; THENCE N 89° 40' 32" E a distance of 50.00 feet to a point for a corner; THENCE S 00° 19' 28" W a distance of 50.00 feet to a point for a corner; THENCE S 89° 40' 32" W a distance of 50.00 feet to a point for a corner; THENCE N 00° 19' 28" W a distance of 10.00 feet to the Place of Beginning and containing 2,500 square feet more or less.

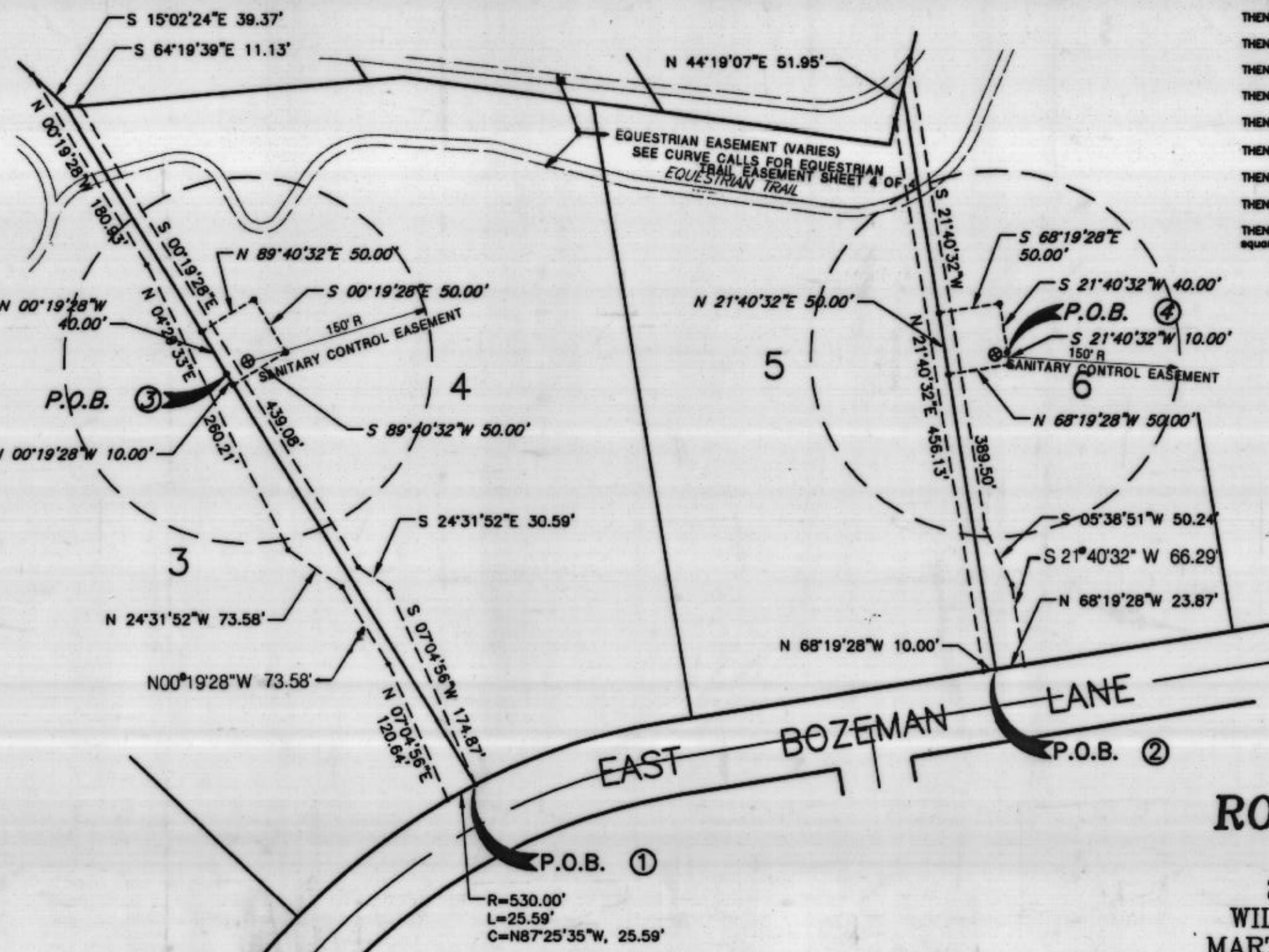
WELL ROAD EASEMENTS

1 Beginning at the S.W. corner of Lot 4, Block 2 Thence along north r.o.w. of East Bozeman Lane with a left curve: R=530.00', L=25.59', C=N87°25'35"W; Thence N07°04'56"E, 120.64'; Thence N07°19'28"W, 73.58'; Thence N24°31'52"W, 53.29'; Thence N04°29'33"E, 260.21'; Thence N07°19'28"W, 180.93' to a point on the S.W. property line of Lot 10, Block 1; Thence along said property line S15°02'24"E, 39.37' to N.W. corner of Lot 4, Block 2; Thence along said north property line S64°19'39"E, 11.13'; Thence S00°19'28"E, 439.08'; Thence S24°31'52"E, 30.59'; Thence S07°04'56"W, 174.87' to Point of Beginning containing .408 acres, or 17,782 square feet, more or less.

LEGAL DESCRIPTION 50' x 50' WATER WELL - SITE NO. 8

A parcel of land 50 feet by 50 feet situated in the JACOB WILCOX SURVEY, Abt. No. 1662, Parker County, Texas, as conveyed to Shriners Hospitals For Crippled Children, as recorded in Volume 1441, Page 853, Real Records, Parker County, Texas, and being more particularly described by metes and bounds, as follows:

Commencing at a wood corner post found in the south line of said Shriners Hospitals tract at the northeast corner of that tract of land conveyed to John J. Quinoy and wife, Karen G. Quinoy, as recorded in Volume 1605, Page 322, Real Records, Parker County, Texas, said point of being the northeast corner of the W.K. CLARKE SURVEY, Abt. No. 2194, Parker County, Texas; THENCE N 00° 19' 28" W a distance of 1058.63 feet; THENCE N 89° 40' 32" E a distance of 461.62 feet to a point on a curve to the left; THENCE along said curve to the left having a radius of 970.00 feet and central angle of 18.0 degrees a distance of 304.73 feet; THENCE N 71° 40' 32" E a distance of 229.83 feet to a curve to the right; THENCE along said curve to the right having a radius of 530.00 feet and a central angle of 40.0 degrees a distance of 370.01 feet; THENCE S 89° 19' 28" E a distance of 270.27 feet; THENCE N 21° 40' 32" E a distance of 254.90 feet; THENCE S 89° 19' 28" E a distance of 40.00 feet to the Well No. 8; THENCE S 89° 19' 28" E a distance of 10.00 feet to the Place of Beginning; THENCE S 21° 40' 32" W a distance of 10.00 feet to a point for a corner; THENCE N 89° 19' 28" W a distance of 50.00 feet to a point for a corner; THENCE N 21° 40' 32" E a distance of 50.00 feet to a point for a corner; THENCE S 89° 19' 28" E a distance of 50.00 feet to a point for a corner; THENCE S 21° 40' 32" W a distance of 40.00 feet to the Place of Beginning and containing 2,500 square feet more or less.



377729 Plat Cabinet B433

STATE OF TEXAS COUNTY OF PARKER I hereby certify that this instrument was filed on the date and time stamped herein by me and was duly recorded in the volume and page of the named records of Parker County as stamped herein by me.

RECORDED DEC 08 1999

SEAL of County Clerk, Parker County, Tex. Name: Jane Brunsom

RECEIVED AND FILED FOR RECORD 3:58 O'Clock

DEC - 8 1999

Brunsom Co. Clerk PARKER COUNTY, TEXAS

FINAL PLAT OF ROLLINS HILLS ESTATES PHASE 1 242.95 ACRES, SITUATED IN THE WILLIAM BRENT SURVEY, AB. NO. 114; MARTIN J. WELLS SURVEY, AB. NO. 1651; AND JACOB WILCOX SURVEY, AB. NO. 1662 PARKER COUNTY, TEXAS