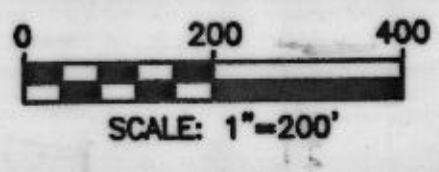


LOCATION MAP
SCALE: 1"=2 miles



CONFEDERATE PARK ROAD
FARM TO MARKET HIGHWAY NO. 1886

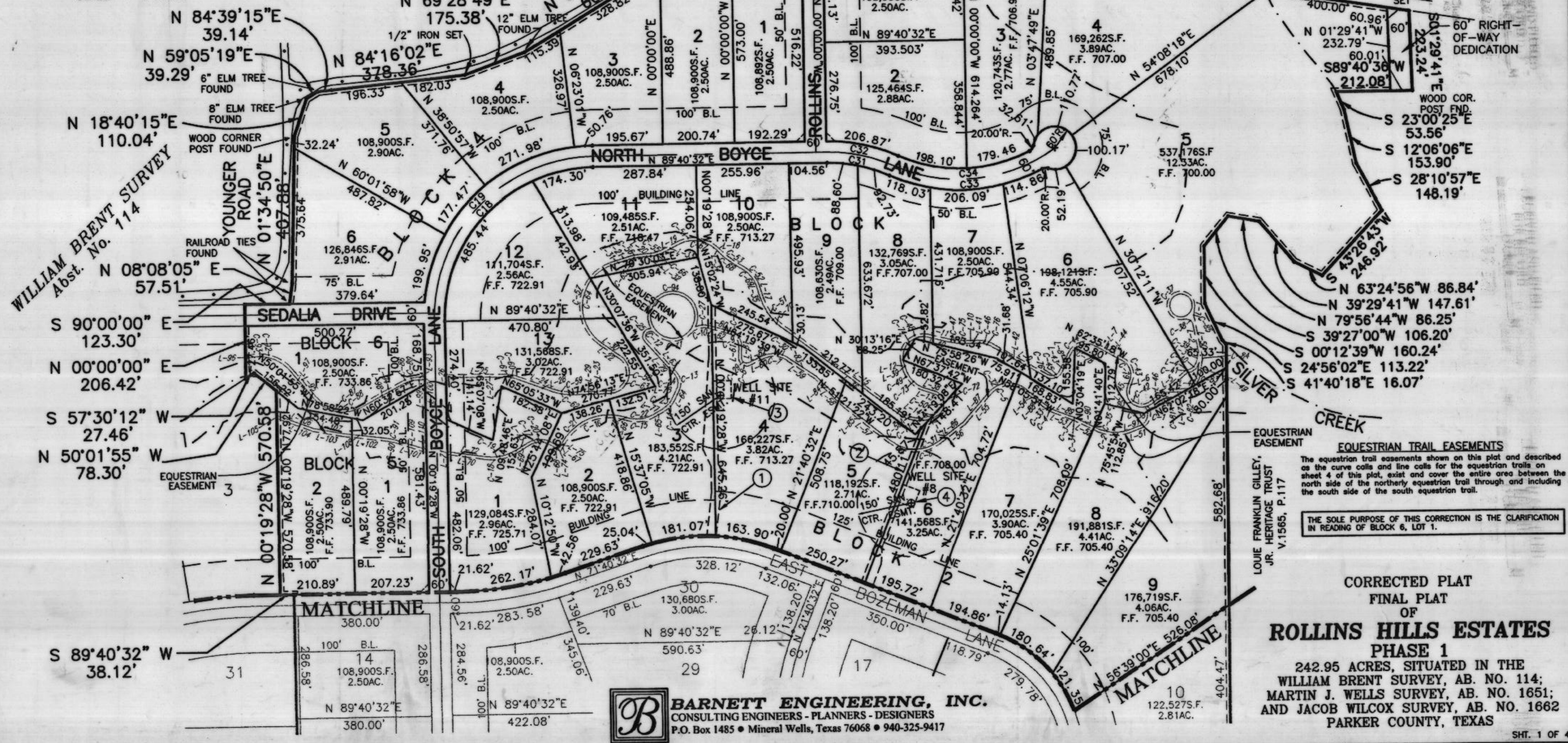
JACOB WILCOX SURVEY
Abst. No. 1662

- WELL ROAD EASEMENTS**
- 1 See Sheet 4 for Road Easement legal description on Well Site #11.
 - 2 See Sheet 4 for Road Easement legal description on Well Site #8.
- WELL SITE EASEMENTS**
- 3 See sheet 4 for Well Site #11 legal description.
 - 4 See sheet 4 for Well Site #8 legal description.

LEGEND
F.F. --- FINISHED FLOOR ELEVATION

JACK MORRISON ARMSTRONG
V.213, P.310

RECEIVED AND FILED
FOR RECORD
4:35 P.M.
FEB 23 2000
Janna Burson, Co. Clerk
PARKER COUNTY, TEXAS



EQUESTRIAN TRAIL EASEMENTS
The equestrian trail easements shown on this plat and described as the curve calls and line calls for the equestrian trails on sheet 4 of this plat, exist and cover the entire area between the north side of the northerly equestrian trail through and including the south side of the south equestrian trail.

THE SOLE PURPOSE OF THIS CORRECTION IS THE CLARIFICATION IN READING OF BLOCK 6, LOT 1.

**CORRECTED PLAT
FINAL PLAT
OF
ROLLINS HILLS ESTATES
PHASE 1**
242.95 ACRES, SITUATED IN THE
WILLIAM BRENT SURVEY, AB. NO. 114;
MARTIN J. WELLS SURVEY, AB. NO. 1651;
AND JACOB WILCOX SURVEY, AB. NO. 1662
PARKER COUNTY, TEXAS

BARNETT ENGINEERING, INC.
CONSULTING ENGINEERS - PLANNERS - DESIGNERS
P.O. Box 1485 • Mineral Wells, Texas 76068 • 940-325-9417