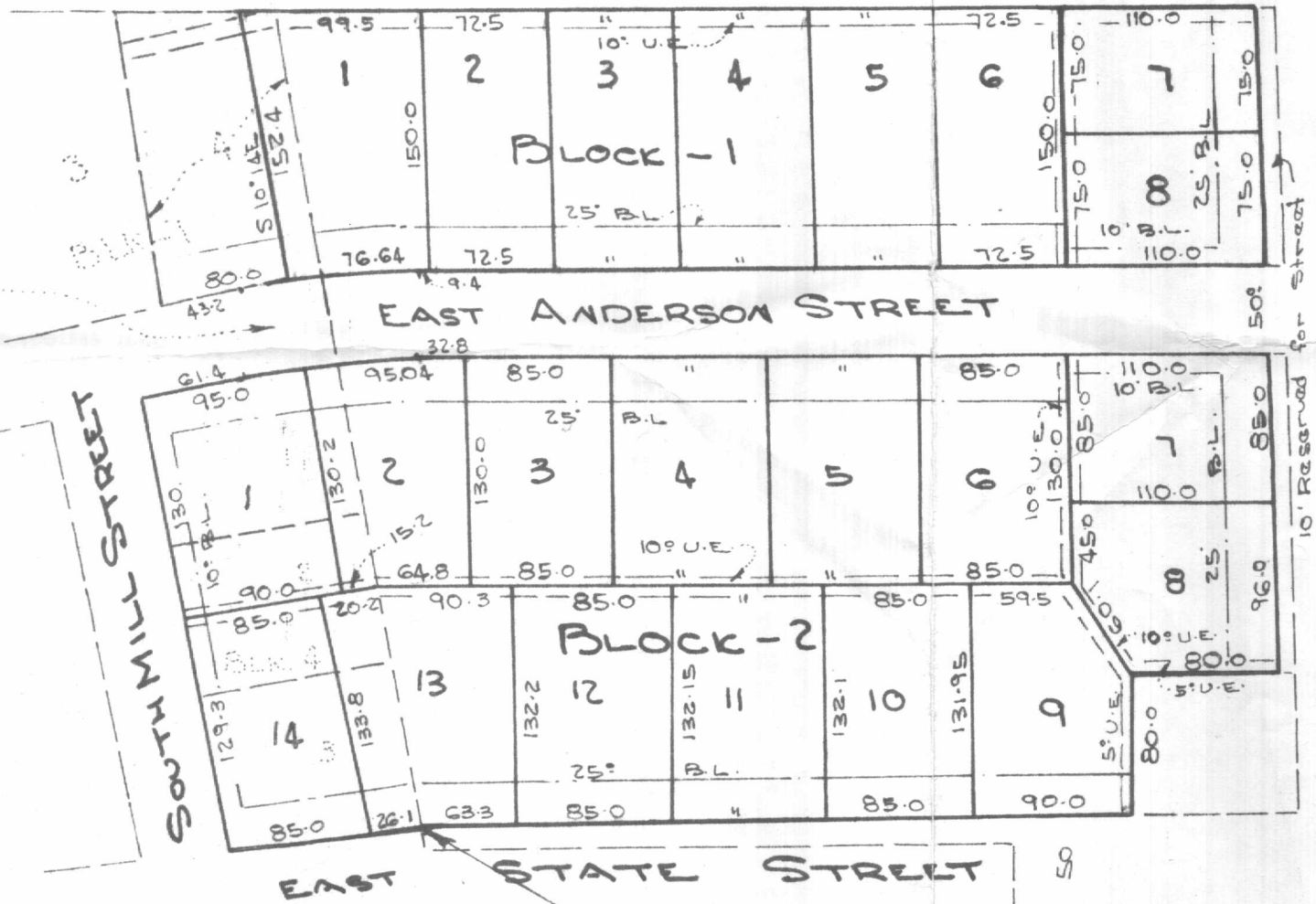


P.C. Curve data
 Δ - 9'23"
 R - 610.33
 L - 99.95
 T - 50.0



ROSELAWN 2ND. ADDN

East 893.32, North 1150.36, N 89°13'E
 71.29, N 1°04'E 373.9, S 89°11'W 335.45
 & N 9°50'W 13.4 from the N.E. cor of
 the B.F. Draper Survey.

ROSELAWN ADDITION
3RD FILING

To THE CITY OF WEATHERFORD, PARKER
 COUNTY, TEXAS
 Being a Revision of a part of Lot 4 Blk 1 & Lots 1, 2 &
 3 Block 4 Roselawn 2nd Addition to Weatherford
 and a 5.47 acre tract of land out of the I.C.
 Spence Survey, Weatherford, Parker Co.
 TEXAS

Scale 1"=100'

CITY COMMISS
 PARKER

APPROVED
 BY:

John J. Man
 Conrad J.
 R. Manshor
 W. H. Harte
 E. A. Morgan