

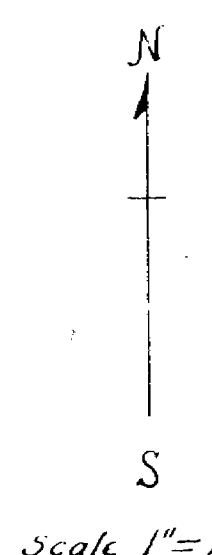
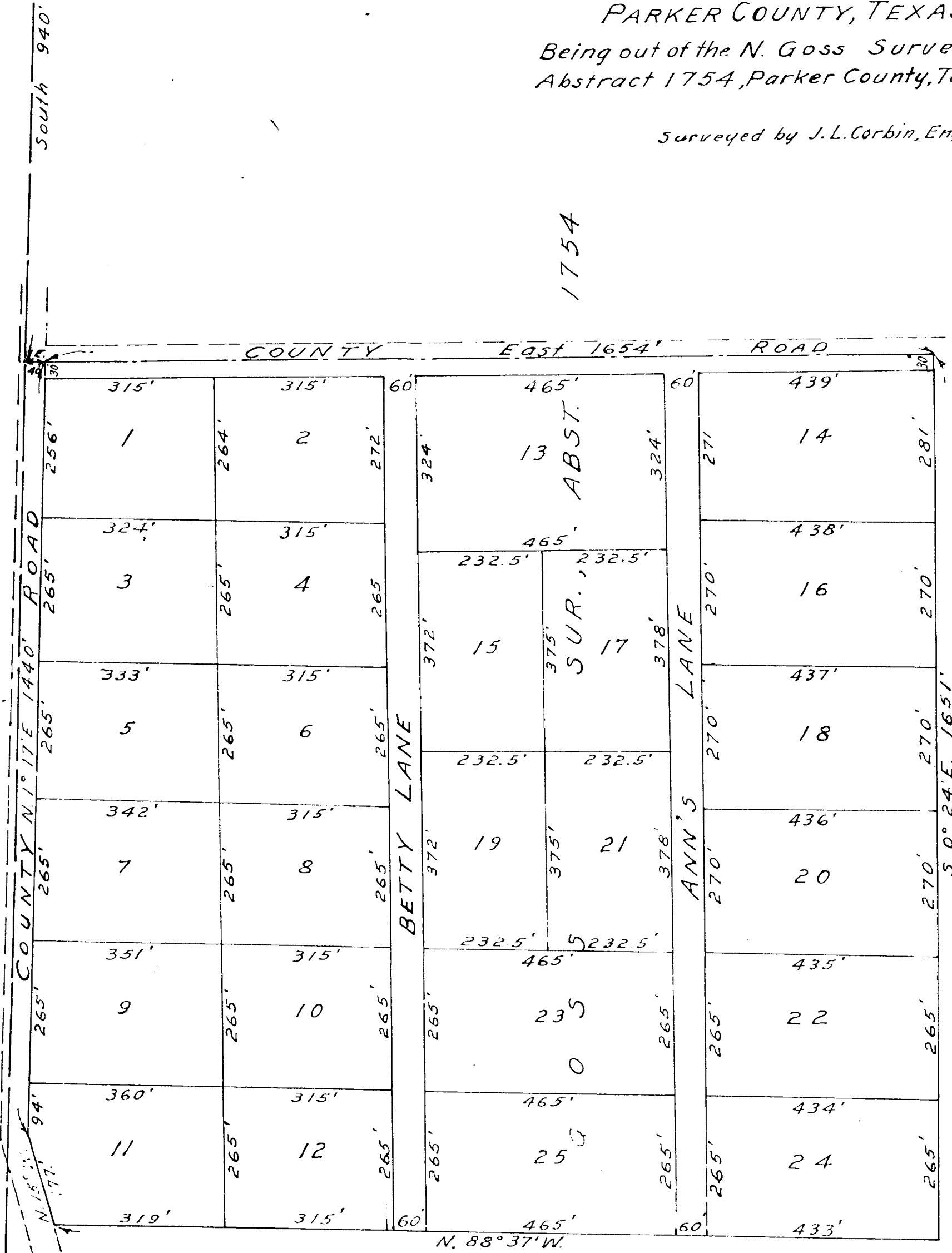
W.C. BURTON SUR.

N.W. Cor. N. Goss Sur.

PLAT OF THE
 "SABATHANY ACRES"
 PARKER COUNTY, TEXAS.
 Being out of the N. Goss Survey,
 Abstract 1754, Parker County, Texas,

Surveyed by J.L. Corbin, Eng., Azle, Tex.

1754



Authorized by Order of Commissioners Court of
 Parker County, Texas this 18 day of Mar., A. D. 1957.

By Opaville Milburn
 County Clerk,
 Deputy

own
 "Sab
 att
 ded
 5T
 Cou
 for
 kno
 ins
 pos
 5T
 Cou
 for
 kno
 ins
 pos
 G
 1
 sen
 sta