

B-300

336005
RECEIVED AND FILED
FOR RECORD
10:00 O'clock AM

MAY 18 1998

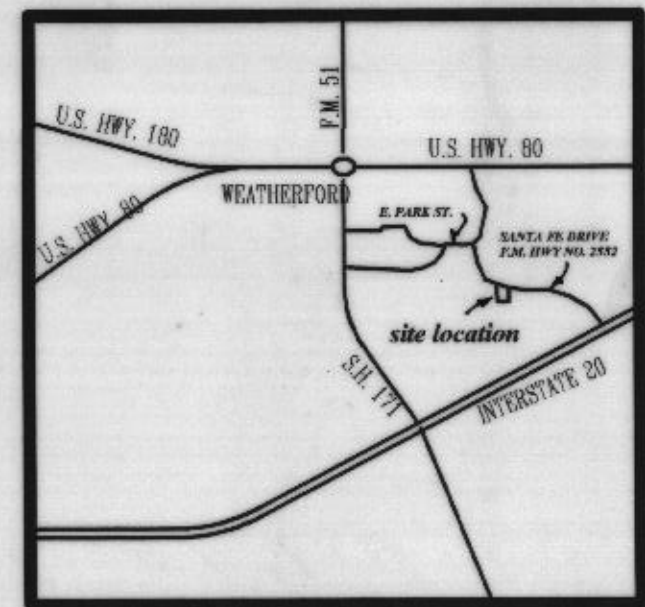
Jeane Brunson, Co. Clerk
PARKER COUNTY, TEXAS
By JPB Deputy

STATE OF TEXAS COUNTY OF PARKER
I hereby certify that this instrument was filed
on the date and time stamped hereon by me and
was duly recorded in the volume and page of the
named records of Parker County as stamped here-
on by me.
RECORDED MAY 18 1998

SEAL
Jeane Brunson
County Clerk Parker County, Texas

CURVE CHART

Curve	Radius	Arc	Chord	Chord Bearing
1	1177.500	154.981	154.869	S 75°48'39" E



LOCATION MAP

Field Notes

Field Notes of Santa Fe Spur, Lot 2R, being a Combination of Santa Fe Spur, Lot 2, according to the Plat Cabinet A, Slide 668, in the City of Weatherford, Parker County, Texas, and that 0.34 acre tract of land deeded from Paul Harris and wife, Norma Harris to Gegory Paul Tankersley and wife, Judy May Tankersley according to Book 1671, Page 379, Real Records, Parker County, Texas.

BEGINNING at a found 1/2" steel pin being the SWBL of F.M. Highway, No 2552 and the NE corner of Lot 2, Santa Fe Spur, according to Plat Cabinet A, Slide 668, P.R.P.C.T.;

THENCE S 00 deg. 13 min. 00 sec. E, with the CBL of Lots 2 and 3, a distance of 101.79 ft. to the SE corner of Lot 2 and continuing a total distance of 200.43 ft. to a found 3/8" steel pin for a corner;

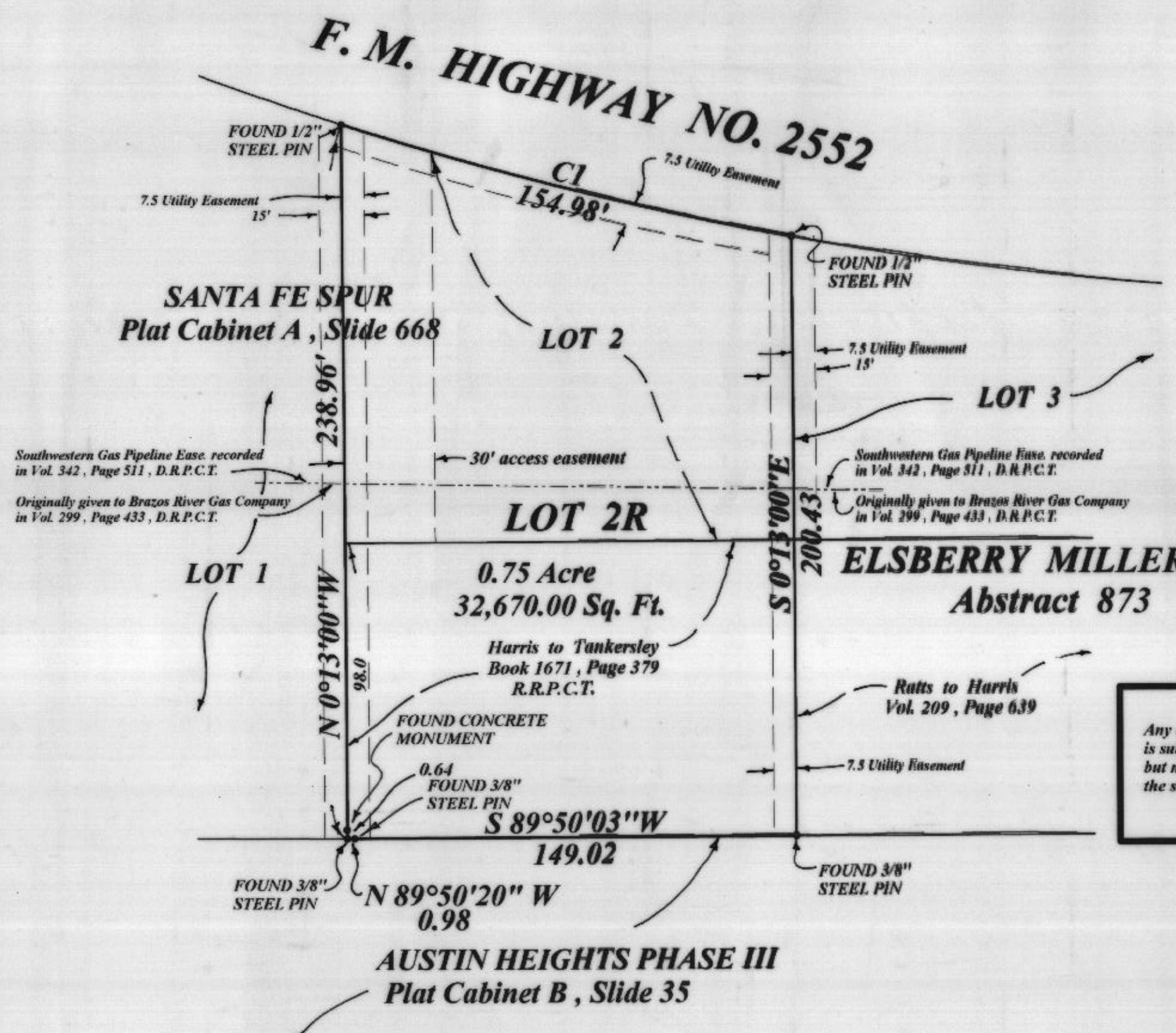
THENCE S 89 deg. 50 min. 03 sec. W, with the NBL of Austin Heights Phase III, a distance of 149.02 ft. to a found 3/8" steel pin for a corner;

THENCE N 89 deg. 50 min. 20 sec. W, with the above mentioned boundary line, a distance of 0.98 ft. to a found 3/8" steel pin for a corner;

THENCE N 00 deg. 13 min. 00 sec. W, with the EBL of Lot 1, Santa Fe Spur, passing a found concrete monument at 0.64 ft. and continuing a distance of 98.0 ft. to the SW corner of Lot 2, Santa Fe Spur, and the CBL of Lots 2 and 3, continuing a total distance of 238.96 ft. to a found 1/2" steel pin in a curve of the SWBL of F.M. Highway No. 2552, for a corner;

THENCE with a curve to the left and the SWBL of F.M. Highway No. 2552, the following data: Radius 1177.50 ft., Chord, S 75 deg. 48 min. 39 sec. E, 154.86 ft., a distance of 154.98 ft., to the point of beginning and containing 0.75 acres, more or less.

Any development upon any lot, parcel, tract, or replat of Santa Fe Spur Addition is subject to all subdivision regulations of the City of Weatherford including, but not limited to, provisions for drainage and storm water control as well as the sanitary sewer and accompanying easements and appurtenances.



SANTA FE SPUR LOT 2R

Being a Combination of SANTA FE SPUR, Lot 2, according to the Plat Cabinet A, Slide 668, in the City of Weatherford, Parker County, Texas, and that 0.34 Acre Tract of land deeded from Paul Harris and wife, Norma Harris to Gregory Paul Tankersley and wife, Judy May Tankersley according to Book 1671, Page 379, Real Records, Parker County, Texas.



TOMMIE HUGHES AND ASSOCIATES
Registered Professional Land Surveyor
1414 S. MAIN STREET WEATHERFORD, TEXAS
Office 594-5274 or 596-0212 Home 613-1164

I, Tommie Hughes, Jr. certify that this map was prepared from field notes of an actual ground survey made by me or under my supervision and to the best of my knowledge and belief represents said survey, and that there are no visible encroachments or protrusions other than those shown on the plat.

Date 3-23-98 No. 17,487