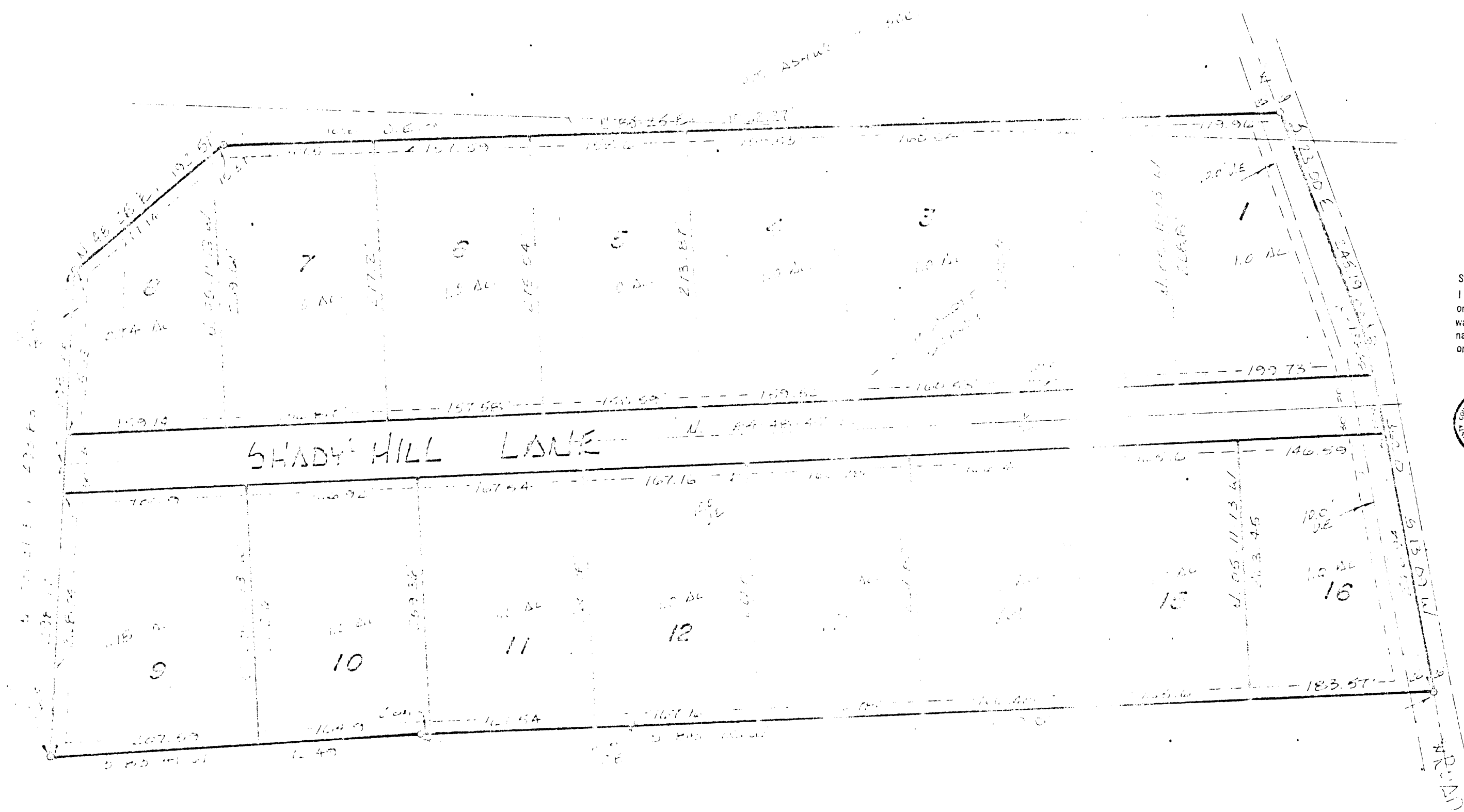


RECEIVED AND FILED
 FOR RECORD
 At 3:09.0'clock P.M.
 AUG 19 1982
 CARRIE REED, Co. Clerk
 PARKER COUNTY, TEXAS
 By: *[Signature]* Deputy
 10.00/1

STATE OF TEXAS COUNTY OF PARKER
 I hereby certify that this instrument was filed
 on the date and time stamped hereon by me and
 was duly recorded in the volume and page of the
 named records of Parker County as stamped here-
 on by me.
 RECORDED AUG 19 1982
 SEAL *Carrie Reed*
 County Clerk, Parker County, Tex.



SCALE 1"=100'
 DATE 8-17-82



WENDELL HANCOCK
 Registered Public Surveyor #1326
 1741 Malton Road
 Ft. Worth, Texas
 817-6243

PLAT SHOWING
 SHADY HILL RANCH
 A SUBDIVISION OF THE J.W.
 ASHWORTH SUR. A 2052, THE J.W.
 FRANKLIN SUR. A 1744 AND THE
 L.J. MALOTT SURVEY, A 2031,
 PARKER COUNTY, TEXAS.

APPROVED _____, 1982
 COMMISSIONERS COURT
 PARKER COUNTY, TEXAS

 Commissioner

 Commissioner

 Commissioner

 Commissioner

This is to certify that a survey has been made on the
 ground, and pins were set at each property corner.