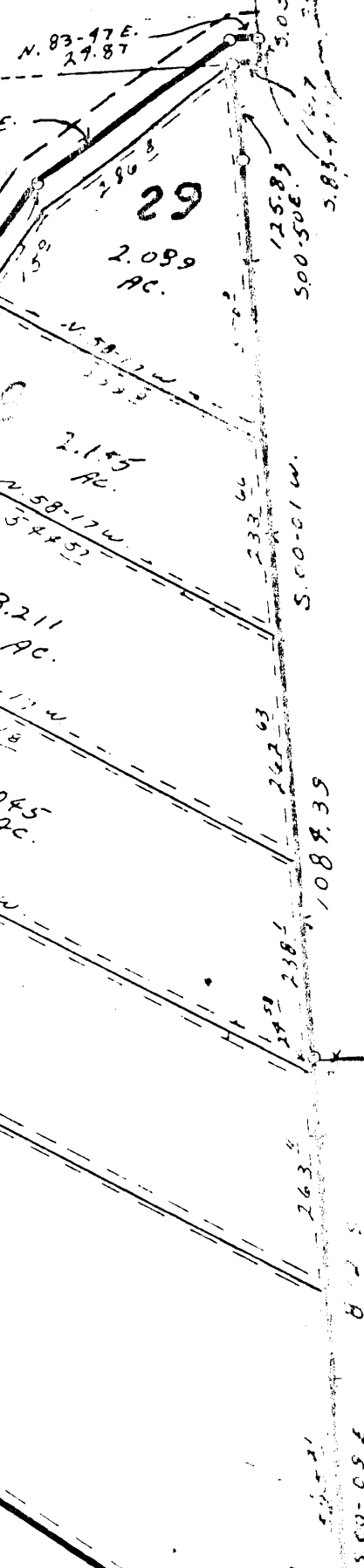
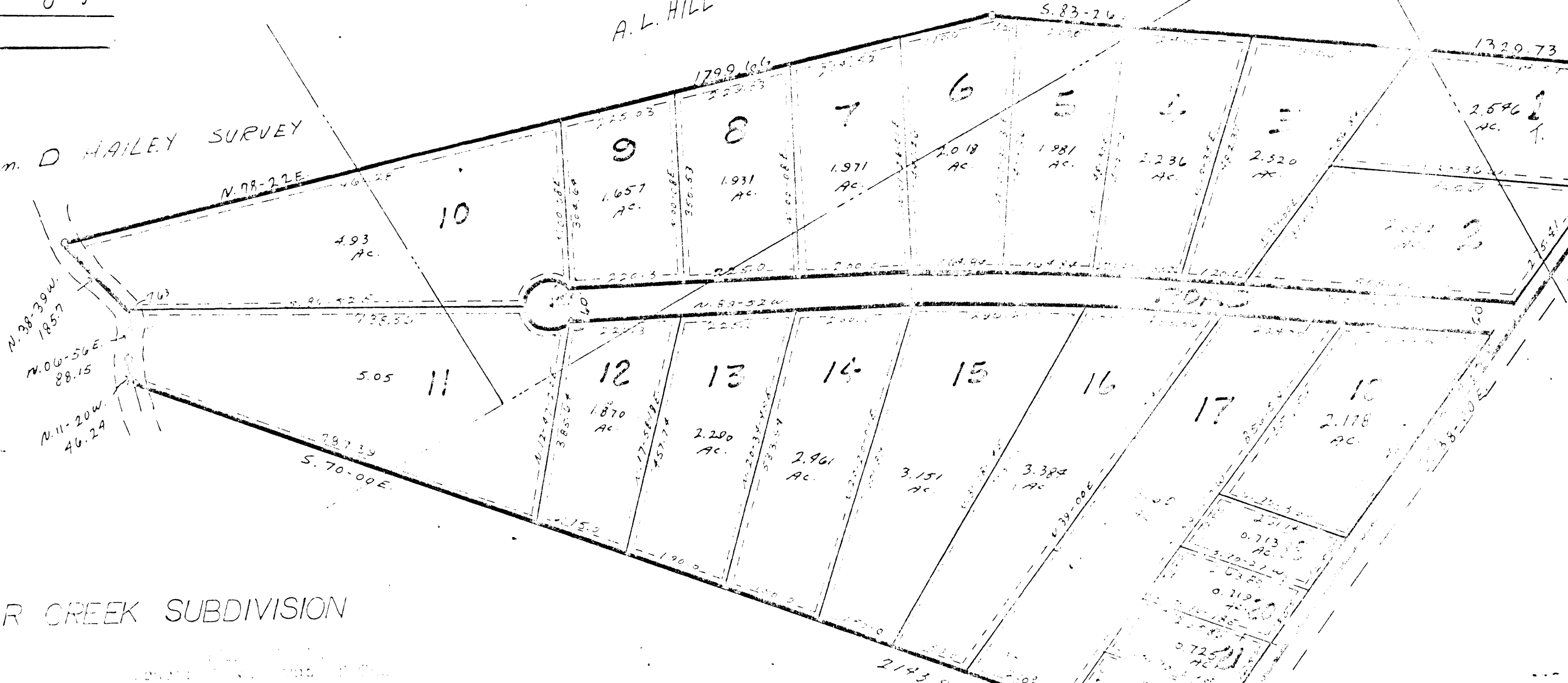


O.K. DAVIS SURVEY



A.L. HILL SURVEY

Wm. D. HAILEY SURVEY



SILVER CREEK SUBDIVISION

S.L. HAVEUS SURVEY

PARKER COUNTY TARRANT COUNTY

APPROVED BY COMMISSIONERS COURT  
 PARKER COUNTY TEXAS  
 BY: *Jenny Indwell*  
 County Judge  
 DATE: 4-10-78

NOTE:  
 ALL UTILITY ENCUMBRANCES  
 ARE 5' WIDE SLIP OFF  
 PROPERTY LINE.

This subdivision is in  
 accordance with the  
 as shown 1-10-78

*[Signature]*

A-325

Volume 361A  
 page 23

RECORDED  
 RECEIVED FOR RECORD  
 FOR DEEDS  
 N. 10  
 APR 11 1978  
 CARRIE REED, CLERK  
 PARKER COUNTY, TEXAS  
 BY: *[Signature]*

STATE OF TEXAS  
 COUNTY OF PARKER  
 I hereby certify that this instrument was  
 filed on the date and time stamped here-  
 on by me and was duly recorded on the  
 11 day of April A.D. 1978, in  
 Vol. 361A page 23, of the Plat  
 records of Parker County, Texas.



*Carrie Reed*  
 County Clerk, Parker  
 County, Texas

SCALE: 1" = 200'

F-52