

345817
PCB 336

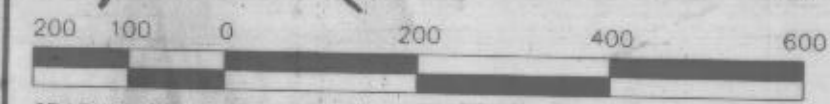
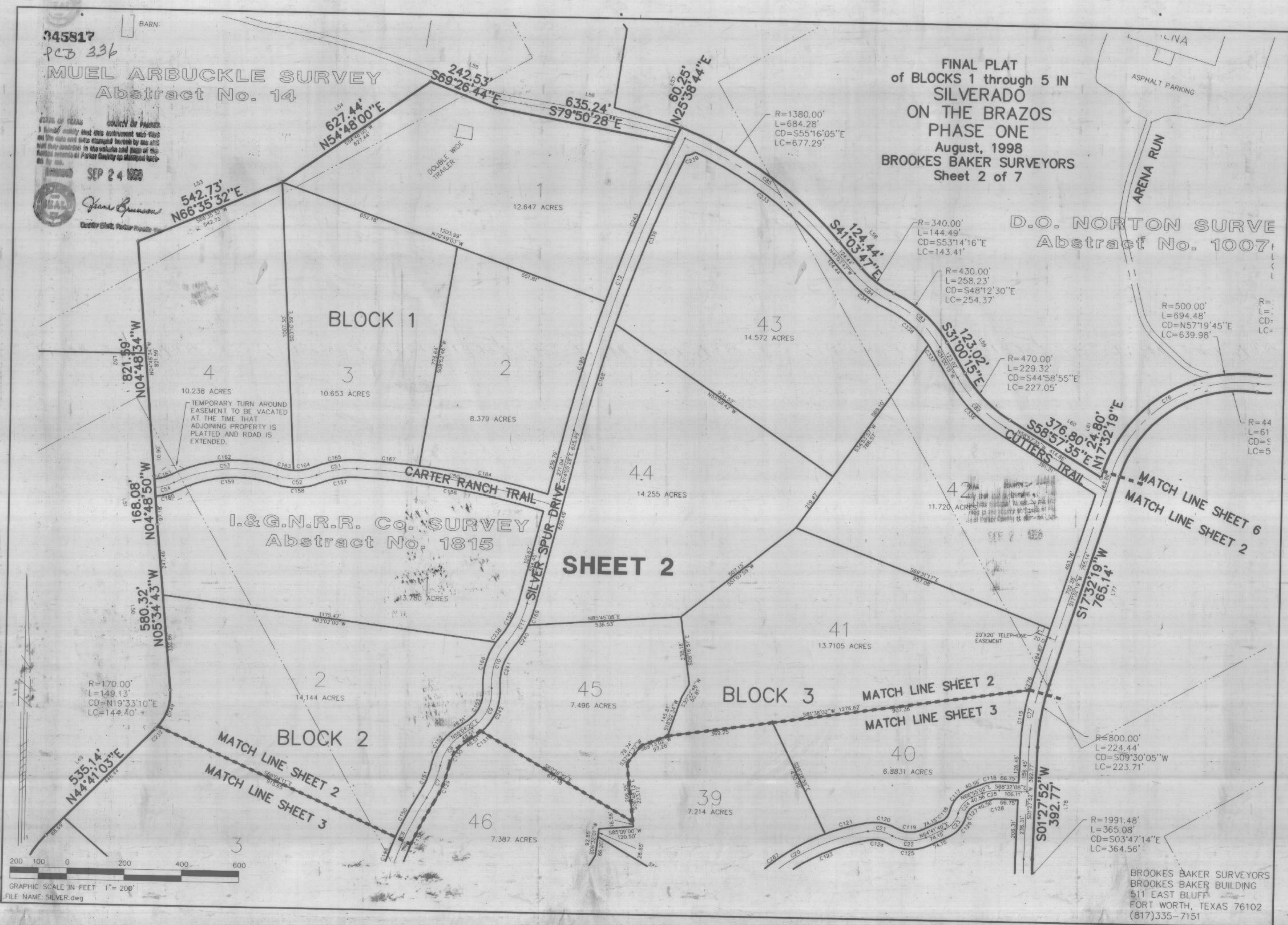
MUEL ARBUCKLE SURVEY Abstract No. 14

STATE OF TEXAS COUNTY OF PARKER
I hereby certify that this instrument was filed
on the date and after stamped herein by me and
not otherwise in the volume and page of this
Public Records of Parker County as abstracted
herein by me.

SEP 24 1998
JAMES GIBSON
County Clerk, Parker County, Texas

FINAL PLAT
of BLOCKS 1 through 5 IN
SILVERADO
ON THE BRAZOS
PHASE ONE
August, 1998
BROOKES BAKER SURVEYORS
Sheet 2 of 7

D.O. NORTON SURVEY
Abstract No. 1007



GRAPHIC SCALE IN FEET 1" = 200'
FILE NAME: SILVER.dwg

BROOKES BAKER SURVEYORS
BROOKES BAKER BUILDING
511 EAST BLUFF
FORT WORTH, TEXAS 76102
(817)335-7151