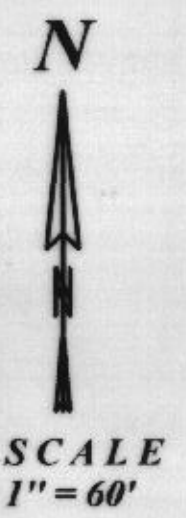
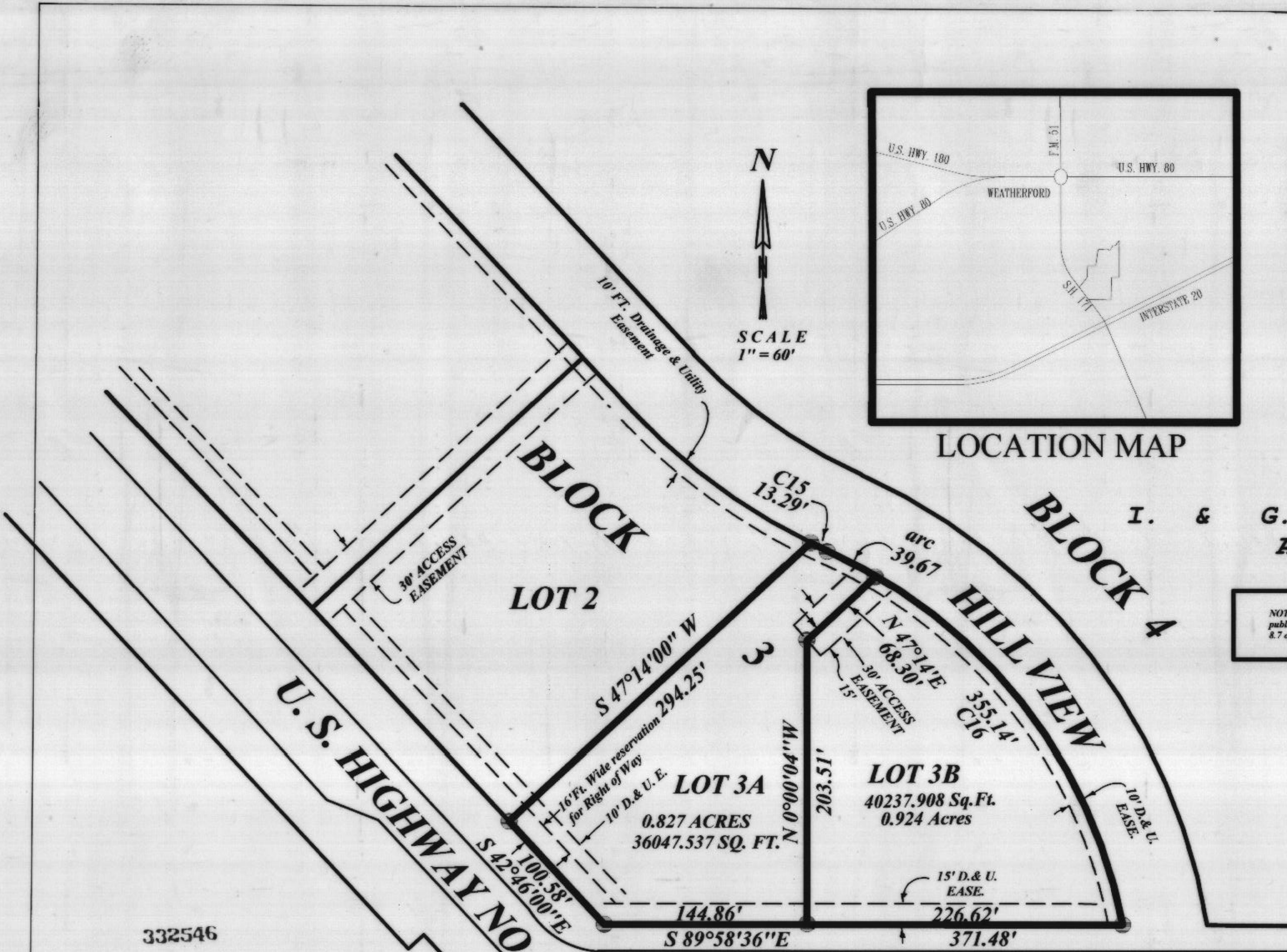


LOCATION MAP

Any development upon any lot, parcel, tract, or replat of Southpark Addition is subject to all subdivision regulations of the City of Weatherford including, but not limited to, provisions for drainage and storm water control as well as the sanitary sewer and accompanying easements and appurtenances.

NOTE: 3/8" inch. steel pins have been set at all boundary line and right of way locations.

NOTE: There shall be provided at the intersections of all public streets, 25' visibility triangles as required by section 8.7 of the Subdivision Ordinance of the City of Weatherford.



CURVE CHART

Curve	Delta Angle	Radius	Arc	Tangent	Chord	Chord Bearing
15	1°46'16"	430.00	13.29	6.65	13.29	S 64°53'28" E
16	54°59'40"	370.00	355.14	192.59	341.66	S 38°17'40" E

LOTS 3A and 3B, BLOCK 3
Being a Replat of
Lot 3, Block 3, SOUTHPARK
ADDITION, an addition in the
City of Weatherford, Parker
County, Texas, according to
plat recorded in Plat Cabinet
B, Slide 228, Plat Records,
Parker County, Texas.

TOMMIE HUGHES AND ASSOCIATES

Registered Professional Land Surveyors
1414 South Main Street, Weatherford, Texas 76086
(817) 594-5374 or (817) 596-0212

332546
RECEIVED AND FILED FOR RECORD
2:10 O'Clock P.M.
MAR 31 1993
Jeane Brunson, Co. Clerk
PARKER COUNTY, TEXAS
By DM Deputy

Plat cabinet B 286

STATE OF TEXAS COUNTY OF PARKER
I hereby certify that this instrument was filed on the date and time stamped hereon by me and was duly recorded in the volume and page of the named records of Parker County as stamped hereon by me.

RECORDED MAR 31 1998
SEAL
Jeane Brunson
County Clerk, Parker County, Texas

