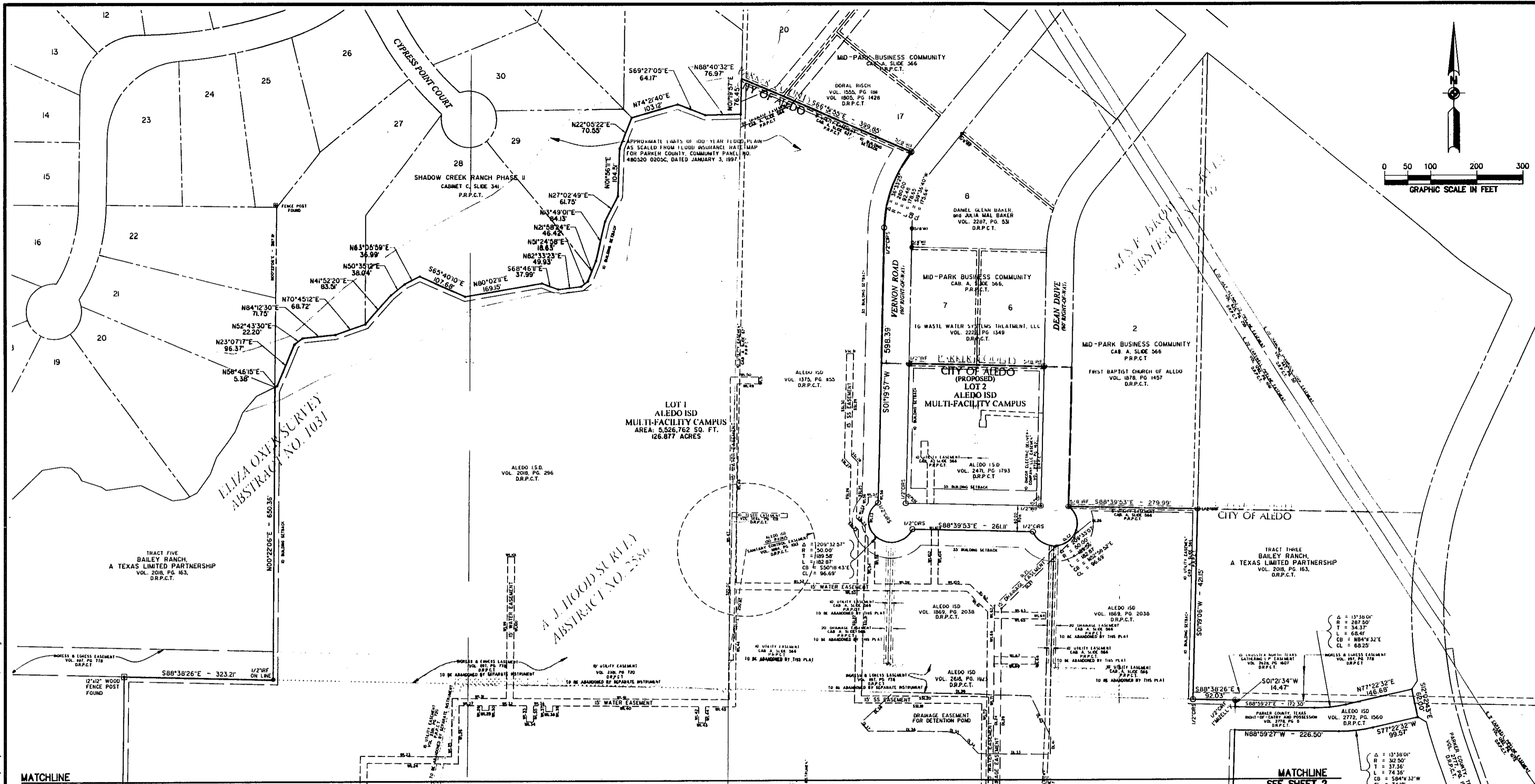


File name: H:\Job\5043\09 Legal\Plat\01 Final\Plat.dwg Date: 12/20/10 User: Skinner, Randy



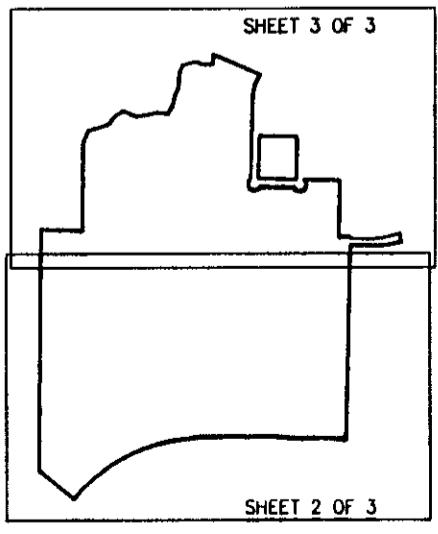
MATCHLINE
SEE SHEET 2

MATCHLINE
SEE SHEET 2

ACCT. NO.:
SCH. DIST.: AL
CITY: YES
MAP NO.: M-17

LEGEND

- UTILITY & DRAINAGE EASEMENT ABANDONMENT
- ACCESS EASEMENT ABANDONMENT
- PROPERTY CORNER FOUND
CAPPED IRON ROD FOUND (STAMPED AS NOTED)
- CONTROL MONUMENT
- PROPERTY CORNER SET
CAPPED IRON ROD SET (STAMPED "MOAR SURV INC")
- "X" CUT IN CONCRETE
- PUBLIC OPEN SPACE EASEMENT



EASEMENT DATA												
WATER, DRAINAGE & SEWER EASEMENT (W/L/DL/SSL= TANGENT LENGTH; W/LC/DLC/SLC= CHORD LENGTH)												
SEGMENT	BEARING	LENGTH	SEGMENT	BEARING	LENGTH	SEGMENT	BEARING	LENGTH	SEGMENT	BEARING	LENGTH	
W.23	S89°28'18"W	197.26'	W.44	S00°31'42"W	34.50'	W.66	S00°28'45"W	84.53'	DL34	N44°25'06"W	57.39'	
W.24	N89°28'18"W	197.26'	W.45	N89°28'18"W	65.50'	W.67	S89°15'10"E	89.32'	DL35	N75°35'15"W	28.45'	
W.25	N00°31'42"E	125.65'	W.46	S00°15'45"E	256.80'	W.68	S00°44'50"W	15.00'	DL36	N89°32'18"W	170.96'	
W.26	S00°31'42"W	125.65'	W.47	N00°15'45"E	716.67'	W.69	N89°15'10"W	89.25'	DL37	N42°34'25"W	23.99'	
W.27	N89°28'18"W	50.02'	W.48	S00°15'45"W	444.87'	W.70	N00°28'45"E	678.44'	DL38	N47°25'35"E	95.87'	
W.28	N00°31'42"E	10.00'	W.49	N89°28'18"W	44.73'	W.71	S00°28'45"E	578.29'	DL39	S88°42'00"E	296.63'	
W.29	N89°28'18"W	15.00'	W.50	S89°28'18"E	61.89'	W.99	N00°31'42"E	311.72'	DL40	S26°50'23"E	97.54'	
W.30	S00°31'42"W	10.00'	W.51	S00°31'42"E	15.00'	W.100	S00°31'42"W	120.70'	DL41	S00°31'00"W	39.62'	
W.31	S89°28'18"E	117.49'	W.52	S89°28'18"E	284.75'	W.101	S89°28'18"W	15.00'	DL42	N51°12'34"E	54.06'	
W.32	N89°28'18"W	81.49'	W.53	N89°28'18"W	500.14'	W.102	N00°31'42"E	120.91'	SANITARY SEWER EASEMENT			
W.33	N00°31'42"E	34.50'	W.54	N00°31'42"E	101.40'	W.103	S89°39'53"E	15.00'	SSL19	N89°28'18"W	276.00'	
W.34	N89°28'18"W	15.00'	W.55	S00°31'42"E	107.07'	W.104	S00°31'42"W	120.70'	SSL20	S89°28'18"W	275.73'	
W.35	S00°31'42"E	34.50'	W.56	N00°31'42"E	13.15'	W.105	S89°28'18"E	69.31'	SSL21	S01°17'00"W	372.39'	
W.36	N89°28'18"W	26.41'	W.57	S89°28'18"E	21.40'	W.106	N00°31'42"E	81.48'	SSL22	N01°17'00"E	381.38'	
W.37	N00°00'54"E	12.01'	W.58	S01°19'57"W	13.47'	W.107	S05°14'06"W	75.73'	SSL23	N43°43'00"W	27.95'	
W.38	N89°28'18"W	15.00'	W.59	S89°28'18"E	122.34'	W.108	N00°28'45"E	482.41'	SSL24	S43°43'00"E	27.95'	
W.39	S00°09'54"W	12.01'	W.60	S44°28'18"E	76.30'	DL24	N00°28'45"E	482.41'	SSL25	S01°17'00"W	127.97'	
W.40	N89°28'18"W	316.48'	W.61	N44°28'18"W	63.88'	DL25	N45°28'45"E	189.01'	SSL26	N01°17'00"E	127.97'	
W.41	S89°28'18"E	467.33'	W.62	S00°28'45"W	6.84'	DL26	S12°52'13"W	17.82'	SSL27	N43°43'00"W	20.21'	
W.42	N00°31'42"E	34.50'	W.63	S89°15'10"E	111.12'	DL27	S45°28'45"W	221.57'	SSL28	S43°43'00"E	20.21'	
W.43	N89°28'18"W	15.00'	W.64	S00°28'45"W	15.00'	DL28	S00°28'45"W	472.90'	SSL29	N01°17'00"E	229.71'	
			W.65	N89°15'10"W	111.12'	DL33	N89°29'00"W	155.94'	SSL30	S01°17'00"W	223.69'	
									SSL31	S89°28'18"E	15.00'	

**REPLAT
LOT 1
ALEDO ISD MULTI-FACILITY
CAMPUS ADDITION**

BEING A REPLAT OF LOT 1, MID-PARK BUSINESS COMMUNITY, RECORDED IN CABINET A, SLIDE NO. 566, P.R.P.C.T., and LOTS J-R & 11-R MID-PARK BUSINESS COMMUNITY, RECORDED IN CABINET A, SLIDE 627, P.R.P.C.T., and 4 TRACTS OF LAND SITUATED IN THE JAMES B. CARR SURVEY, ABSTRACT NO. 255, the JOHN G. WRAY SURVEY, ABSTRACT NO. 1639, the ELIZA OXER SURVEY, ABSTRACT NO. 1031, the A.J. HOOD SURVEY, ABSTRACT NO. 2586, and the JAMES R. BROWN SURVEY, ABSTRACT NO. 69 in ALEDO, PARKER COUNTY, TEXAS, and BEING DESCRIBED IN DEEDS RECORDED IN VOLUME 1820, PAGE 1302, VOLUME 2018, PAGE 296, VOLUME 2618, PAGE 1923, and VOLUME 2772, PAGE 1560, D.R.P.C.T.

NOVEMBER 1, 2010

OWNER/DEVELOPER
ALEDO INDEPENDENT SCHOOL DISTRICT
1008 BAILEY RANCH ROAD
ALEDO, TEXAS 76008
(817) 441-8327 FAX (817) 441-5113

ENGINEER/SURVEYOR
SCHRICKEL, ROLLINS, & ASSOCIATES, INC.
1161 CORPORATE DR. WEST, SUITE 200
ARLINGTON, TEXAS 76006
(817) 649-3216 FAX (817) 649-7645

THIS PLAT FILED IN CABINET D SLIDE NO. 101 DATED _____ SHEET 3 OF 3