



CITY PLAN COMMISSION  
CITY OF FORT WORTH, TEXAS

THIS PLAT IS VALID ONLY IF RECORDED WITHIN NINETY  
(90) DAYS AFTER DATE OF APPROVAL

PLAT APPROVAL DATE November 19, 2018

*Mary Elliott*  
CHAIRMAN  
SECRETARY

CURVE	RADIUS	ARC LENGTH	CHORD LENGTH	CHORD BEARING
C1	217.00'	48.65'	47.95'	N 07°09'41" W
C2	183.00'	70.59'	70.16'	N 02°21'13" W
C3	720.00'	3.91'	3.91'	N 08°51'11" E
C4	780.00'	54.64'	94.58'	N 05°31'59" E
C5	780.00'	124.57'	101.50'	N 01°00'00" E
C6	720.00'	103.17'	103.00'	N 10°29'56" W
C7	720.00'	133.17'	125.01'	N 01°24'50" W
C8	720.00'	126.85'	126.68'	N 08°36'48" E
C9	720.00'	7.65'	7.65'	N 15°57'55" E
C10	780.00'	70.99'	70.96'	N 11°59'43" E
C11	780.00'	125.55'	125.51'	N 04°20'24" E
C12	780.00'	114.73'	114.62'	N 07°25'13" W
C13	720.00'	20.93'	20.97'	N 00°59'41" W
C14	52.00'	26.60'	25.84'	N 23°48'10" E
C15	60.00'	93.53'	84.35'	N 45°21'56" W
C16	60.00'	49.17'	47.81'	S 24°12'53" E
C17	32.00'	26.00'	25.89'	S 23°52'38" E
C18	780.00'	21.82'	21.82'	S 05°07'24" E
C19	720.00'	106.49'	106.39'	S 04°21'54" E
C20	720.00'	125.76'	125.60'	S 04°52'33" W
C21	720.00'	55.16'	55.15'	S 12°04'28" W
C22	780.00'	126.57'	126.43'	S 07°53'00" W
C23	780.00'	125.14'	125.01'	S 01°21'41" E
C24	780.00'	117.65'	117.54'	S 10°16'44" E
C25	720.00'	32.52'	32.57'	S 10°24'13" E
C26	720.00'	84.43'	84.38'	S 05°36'56" W
C27	780.00'	11.88'	11.88'	S 08°34'20" W
C28	183.00'	41.19'	41.10'	S 14°35'01" W
C29	217.00'	62.37'	61.88'	S 10°09'24" W

LINE	BEARING	DISTANCE
L1	N 45°44'23" W	14.14'
L2	N 00°43'05" W	55.14'
L3	N 09°00'32" E	18.56'
L4	N 09°00'32" E	31.44'
L5	N 14°36'01" W	25.84'
L6	N 14°36'01" W	24.16'
L7	N 14°16'09" E	50.00'
L8	N 08°36'08" W	10.71'
L9	N 08°36'08" W	39.29'
L10	N 00°03'44" W	35.76'
L11	S 00°03'44" E	35.76'
L12	S 08°36'08" E	31.00'
L13	S 08°36'08" E	19.00'
L14	S 14°16'09" W	50.00'
L15	S 14°36'01" E	40.65'
L16	S 14°36'01" E	9.93'
L17	S 09°00'32" W	41.75'
L18	S 09°00'32" W	8.25'
L19	S 00°50'53" E	55.21'
L20	S 44°37'09" W	14.24'

EASEMENT TABLE

C37	242.00'	53.58'	52.48'	N 07°03'41" W
C38	158.00'	60.95'	60.57'	N 02°21'13" W
C39	695.00'	3.78'	3.78'	N 08°51'11" E
C40	242.00'	91.89'	91.34'	N 10°09'12" E
C41	158.00'	35.56'	35.49'	N 14°35'01" E
C42	805.00'	1.02'	1.02'	N 08°10'20" E
C43	40.00'	32.39'	31.52'	S 66°03'45" W
C44	25.00'	20.25'	19.70'	S 66°03'45" W
C45	10.00'	18.73'	16.11'	S 52°55'16" W
C46	40.00'	31.99'	29.85'	N 36°46'03" W
C47	25.00'	63.27'	56.88'	N 45°21'52" W
C48	40.00'	30.44'	30.19'	N 12°48'25" E
C49	67.50'	37.21'	36.90'	S 12°48'25" W
C50	82.50'	15.71'	14.14'	N 45°44'13" W
C51	10.00'	39.00'	35.16'	S 44°37'28" W

L21	N 09°00'32" E	7.63'
L22	S 89°53'10" W	5.00'
L23	S 89°53'10" W	5.00'
L24	S 89°54'17" W	30.87'
L25	S 00°44'13" E	80.37'
L26	N 89°51'53" E	5.13'
L27	S 00°08'07" E	25.00'
L28	S 89°51'53" W	25.00'
L29	N 00°08'07" W	25.00'
L30	N 89°51'53" E	4.87'
L31	N 89°15'47" E	36.97'
L32	S 00°44'13" E	10.00'
L33	N 89°53'10" E	5.00'
L34	N 89°53'10" E	20.00'
L35	S 00°44'13" E	35.27'
L36	S 89°15'47" W	86.54'
L37	S 00°08'07" E	5.00'
L38	S 89°15'47" W	5.54'

CASE NO. FP-017-019

FINAL PLAT

LOTS 1-26, BLOCK 1 &  
LOT 1, BLOCK 2

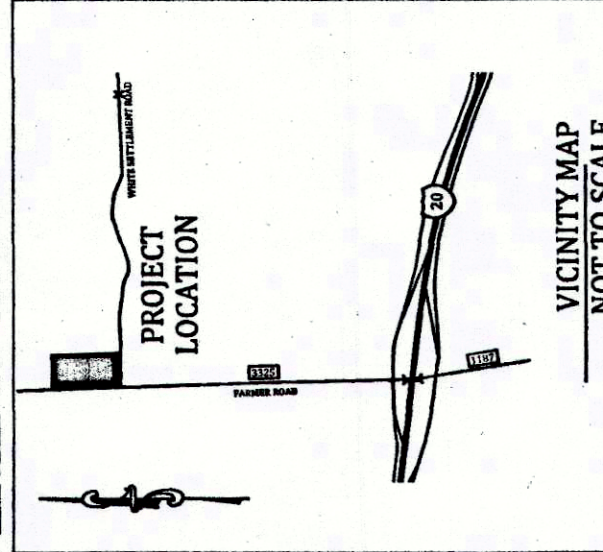
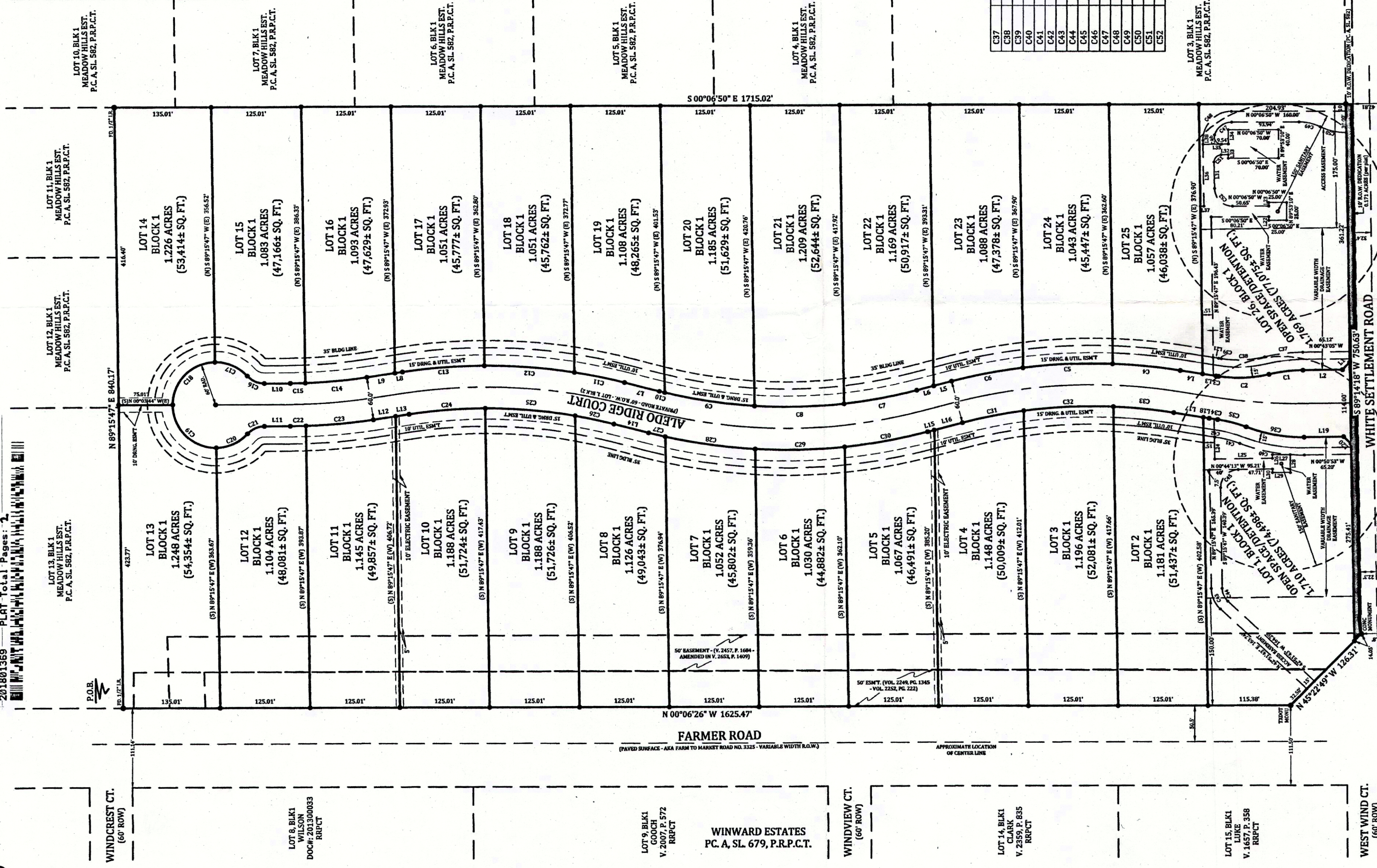
ALEDO RIDGE

AN ADDITION TO PARKER COUNTY, TEXAS,  
BEING 32.992 ACRES OUT OF THE I. & G. N.  
R.R. CO. SURVEY, ABSTRACT NO. 1778,  
PARKER COUNTY, TEXAS.  
DECEMBER 2017

CARTER SURVEYING  
& MAPPING

110 PALO PINTO ST., WEATHERFORD, TX 76086  
(817) 594-0400 - (817) 594-0403

21778.001.001.00



BETSY JO DEARING BROWDER  
V. 450, P. 440  
D.R.P.C.T.  
RESIDENTIAL EIT

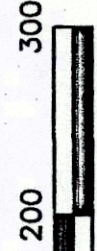
FILED THIS THE \_\_\_\_\_ DAY OF \_\_\_\_\_ 2017,  
IN \_\_\_\_\_ OF THE PLAT RECORDS  
OF PARKER COUNTY, TEXAS.

10899  
CARTER SURVEYING & MAPPING  
110 PALO PINTO STREET  
WEATHERFORD, TEXAS 76086  
PHONE: 817.594.0400

BAIRD, HAMPTON & BROWN, INC.  
1901 MARTIN DRIVE, SUITE 100  
WEATHERFORD, TEXAS 76086  
PHONE: 817.596.7575

MR. JIM HADDOCK  
600 SUMMIT AVENUE, SUITE 202  
WEATHERFORD, TEXAS 76086  
PHONE: 817.332.8883

1" = 100'



WINDVIEW CT. (60' ROW)

OWNER:  
ALEDO RIDGE, LLC  
600 SUMMIT AVENUE  
FORT WORTH, TEXAS 76102  
PHONE: 817.332.8883

SUBDIVIDER:  
ALEDO RIDGE, LLC  
MR. JIM HADDOCK  
600 SUMMIT AVENUE, SUITE 202  
WEATHERFORD, TEXAS 76086  
PHONE: 817.332.8883

LOT 17, BLK1 MARTINEZ V. 2082, P. 562 R.R.P.C.T.

LOT 15, BLK1 V. 4657, P. 258 R.R.P.C.T.

LOT 14, BLK1 CLARK V. 2359, P. 835 R.R.P.C.T.

WINDVIEW CT. (60' ROW)

WINWARD ESTATES  
P.F. A. SL. 679, P.R.P.C.T.

LOT 9, BLK1 GOOCH V. 2082, P. 572 R.R.P.C.T.

LOT 8, BLK1 WILSON DOC#P13100033 R.R.P.C.T.

WINDCREST CT. (60' ROW)

201801369 PLAT Total Pages: 2

LOT 13, BLK1 MEADOW HILLS EST. P.C.A. SL. 582, P.R.P.C.T.

LOT 12, BLK1 MEADOW HILLS EST. P.C.A. SL. 582, P.R.P.C.T.

LOT 11, BLK1 MEADOW HILLS EST. P.C.A. SL. 582, P.R.P.C.T.

LOT 10, BLK1 MEADOW HILLS EST. P.C.A. SL. 582, P.R.P.C.T.

LOT 7, BLK1 MEADOW HILLS EST. P.C.A. SL. 582, P.R.P.C.T.

LOT 6, BLK1 MEADOW HILLS EST. P.C.A. SL. 582, P.R.P.C.T.

LOT 5, BLK1 MEADOW HILLS EST. P.C.A. SL. 582, P.R.P.C.T.

LOT 4, BLK1 MEADOW HILLS EST. P.C.A. SL. 582, P.R.P.C.T.

LOT 3, BLK1 MEADOW HILLS EST. P.C.A. SL. 582, P.R.P.C.T.

LOT 2, BLK1 MEADOW HILLS EST. P.C.A. SL. 582, P.R.P.C.T.

LOT 1, BLK1 MEADOW HILLS EST. P.C.A. SL. 582, P.R.P.C.T.