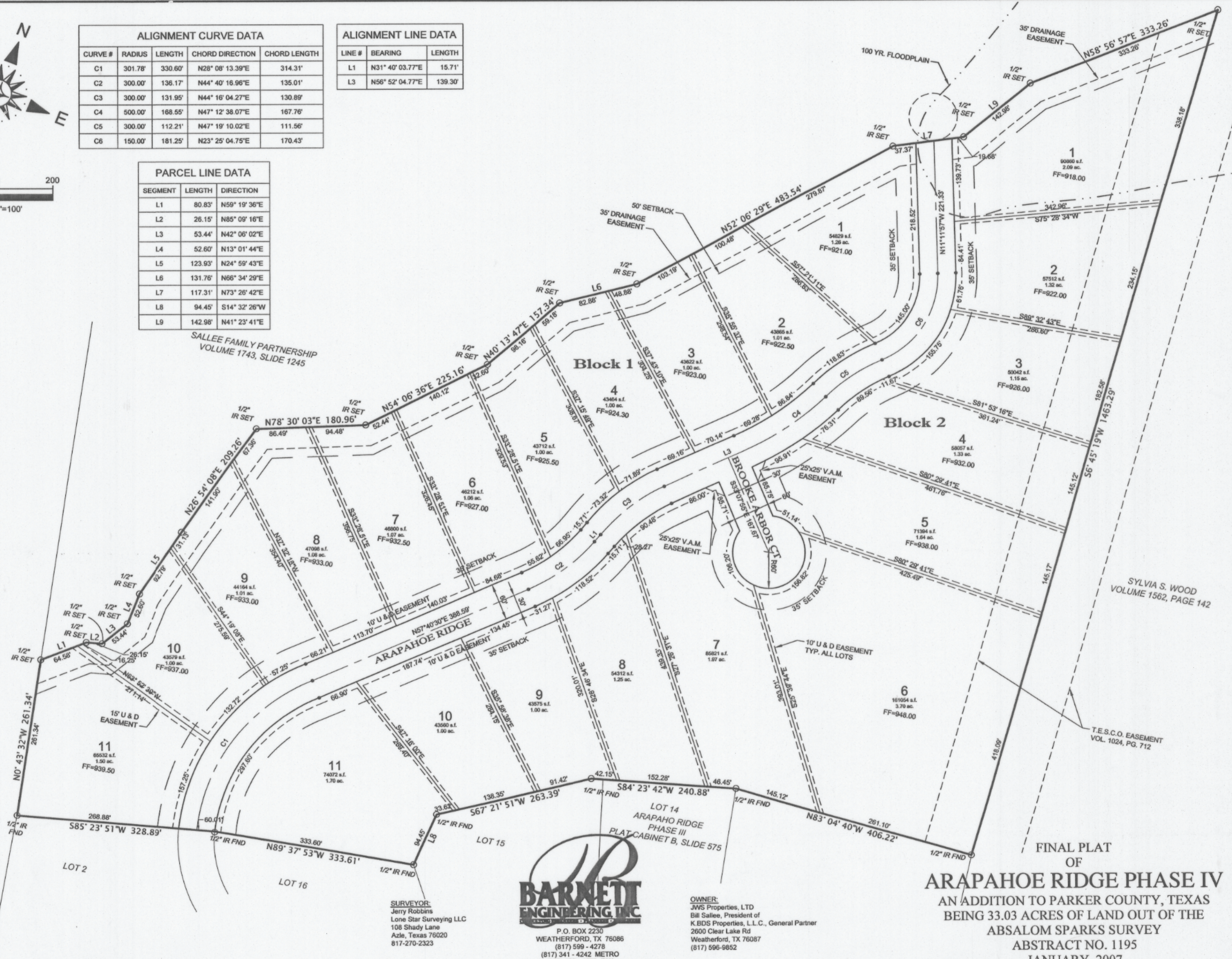


ALIGNMENT CURVE DATA				
CURVE #	RADIUS	LENGTH	CHORD DIRECTION	CHORD LENGTH
C1	301.78'	330.60'	N28° 08' 13.39"E	314.31'
C2	300.00'	136.17'	N44° 40' 16.96"E	135.01'
C3	300.00'	131.95'	N44° 16' 04.27"E	130.89'
C4	500.00'	168.55'	N47° 12' 38.07"E	167.76'
C5	300.00'	112.21'	N47° 19' 10.02"E	111.56'
C6	150.00'	181.25'	N23° 25' 04.75"E	170.43'

ALIGNMENT LINE DATA		
LINE #	BEARING	LENGTH
L1	N31° 40' 03.77"E	15.71'
L3	N56° 52' 04.77"E	139.30'

PARCEL LINE DATA		
SEGMENT	LENGTH	DIRECTION
L1	80.83'	N59° 19' 36"E
L2	26.15'	N85° 09' 16"E
L3	53.44'	N42° 06' 02"E
L4	52.60'	N13° 01' 44"E
L5	123.93'	N24° 59' 43"E
L6	131.76'	N66° 34' 29"E
L7	117.31'	N73° 26' 42"E
L8	94.45'	S14° 32' 26"W
L9	142.98'	N41° 23' 41"E



SALLEE FAMILY PARTNERSHIP
VOLUME 1743, SLIDE 1245

SYLVIA S. WOOD
VOLUME 1562, PAGE 142

T.E.S.C.O. EASEMENT
VOL. 1024, PG. 712

S:\Engineering\Projects\2006\060213-Arapahoe Ridge IV2 & 3 - FinalPlat.dwg, Layout1, 1/26/2007 11:05:19 AM, ramey, HP 800 800PS 42 by HP.pc3

SURVEYOR:
Jerry Robbins
Lone Star Surveying LLC
108 Shady Lane
Azle, Texas 76020
817-270-2323



OWNER:
JWS Properties, LTD
Bill Sallee, President of
K.BDS Properties, L.L.C., General Partner
2600 Clear Lake Rd
Weatherford, TX 76087
(817) 596-9852

OWNER:
JWS Properties, LTD
Bill Sallee, President of
K.BDS Properties, L.L.C., General Partner
2600 Clear Lake Rd
Weatherford, TX 76087
(817) 596-9852

FINAL PLAT
OF
ARAPAHOE RIDGE PHASE IV
AN ADDITION TO PARKER COUNTY, TEXAS
BEING 33.03 ACRES OF LAND OUT OF THE
ABSALOM SPARKS SURVEY
ABSTRACT NO. 1195
JANUARY, 2007

G-99 E