

CURVE DATA
 K = 2506.42
 Δ = 07° 02' 14"
 T = 178.71'
 L = 356.97'

110861

20.000

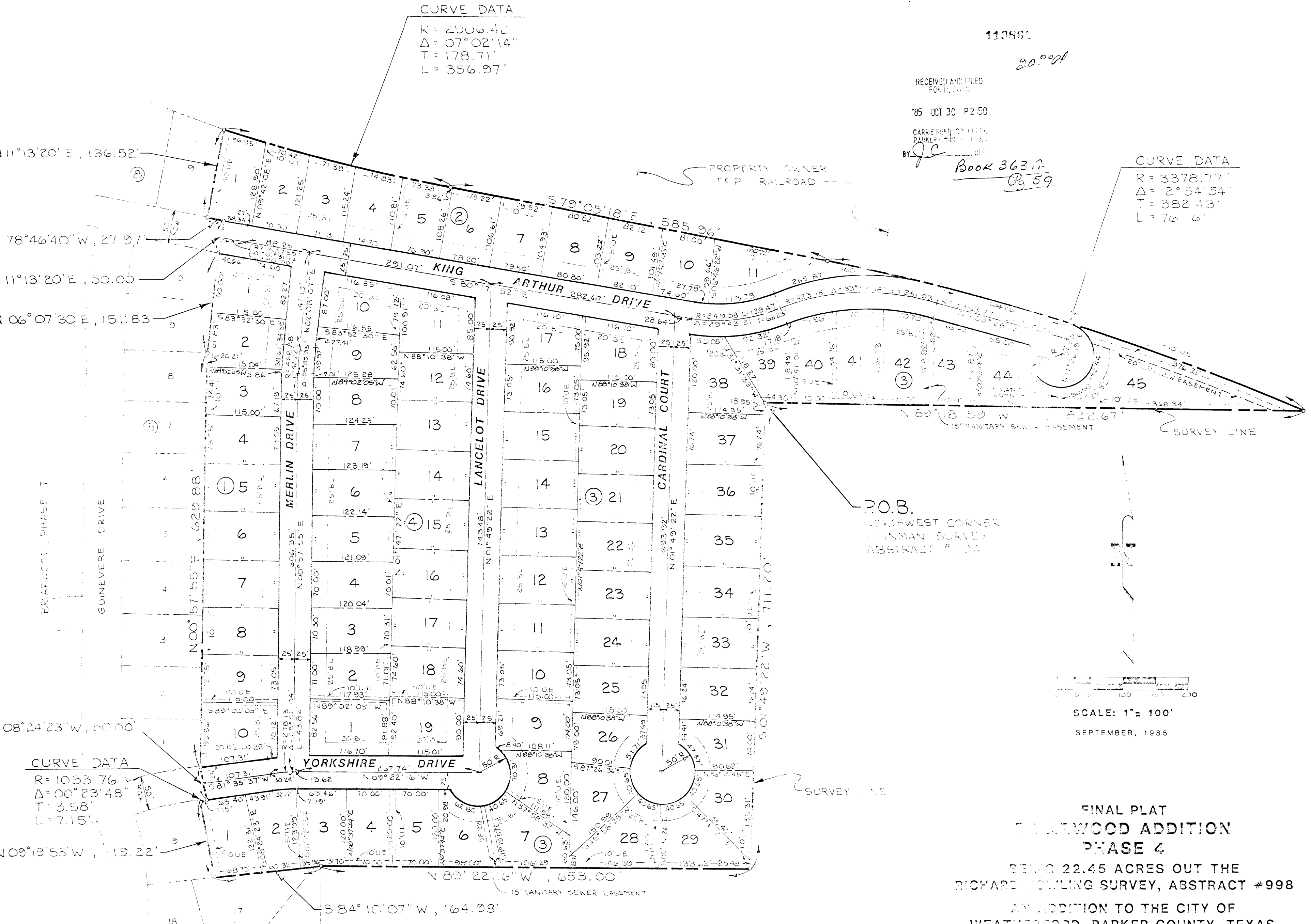
RECEIVED AND FILED
 FOR RECORD

'85 OCT 30 P2:50

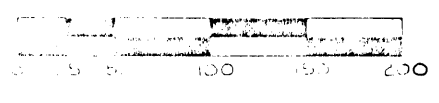
CARRIE ELLIOTT, COUNTY CLERK,
 PARKER COUNTY, TEXAS

BY J.C. Book 363 p. 59

CURVE DATA
 R = 3378.77'
 Δ = 12° 54' 54"
 T = 382.43'
 L = 761.6'



CURVE DATA
 R = 1033.76'
 Δ = 00° 23' 48"
 T = 3.58'
 L = 7.15'



SCALE: 1" = 100'
 SEPTEMBER, 1985

FINAL PLAT
 WILKINSON ADDITION
 PHASE 4
 BEING 22.45 ACRES OUT THE
 RICHARD HOWLING SURVEY, ABSTRACT # 998
 AN ADDITION TO THE CITY OF
 WEATHERFORD, PARKER COUNTY, TEXAS

OWNER:
 O.L. PITTS, TRUSTEE

ENGINEER:
 VENTURA ENGINEERING CONSULTANTS, INC.
 302 EAST BORDER, SUITE 300
 ARLINGTON, TEXAS 76010
 PHONE (METRO) 469-1671

(SHEET #1 OF 2)

NOTE: LOTS 1 thru 4, BLOCK 2 TO HAVE A MINIMUM FINISHED FLOOR OF 355.00 .