

D-370

201424324 PLAT Total Pages: 1

* - Denotes Additional Encumbrances

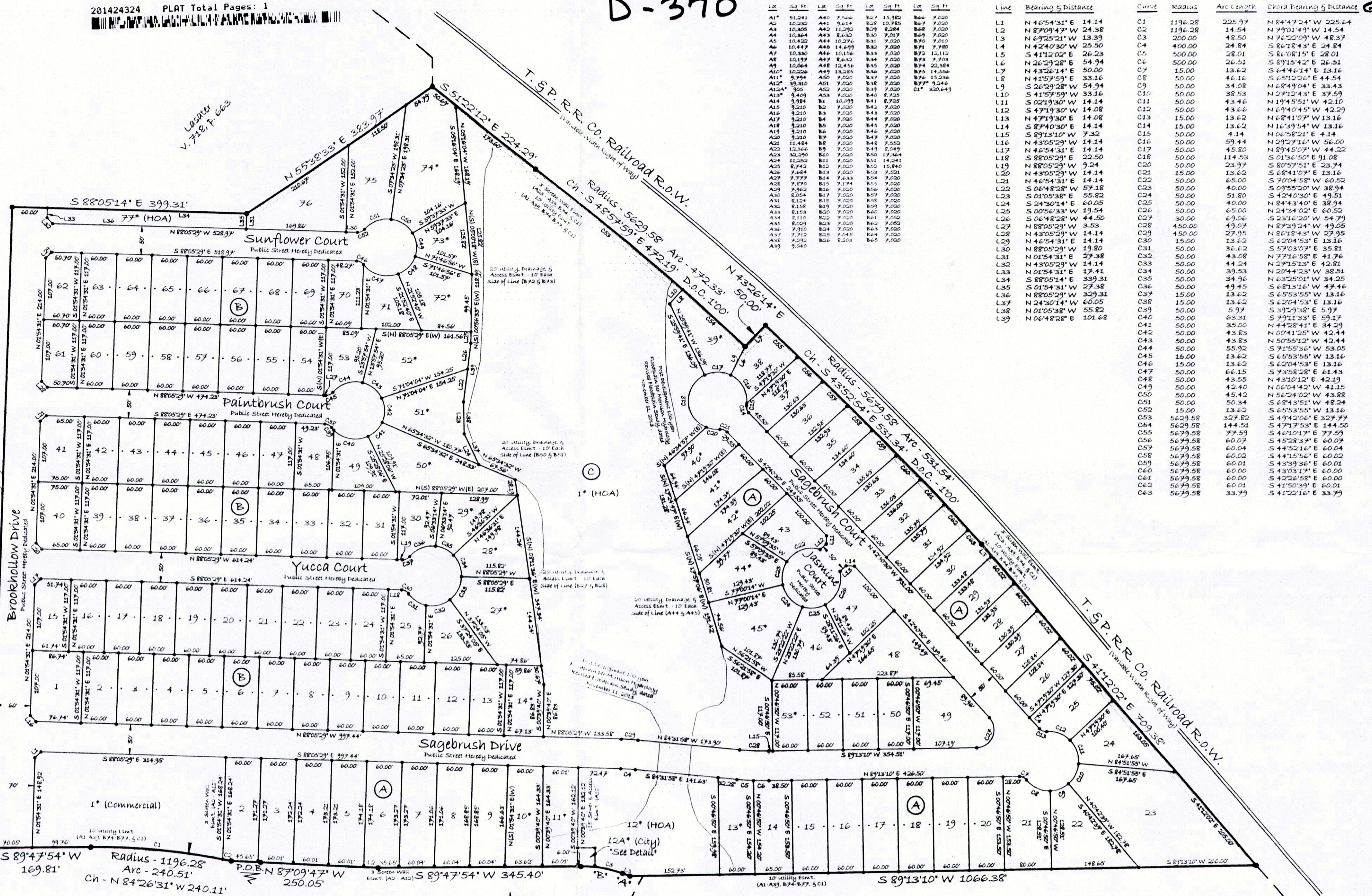
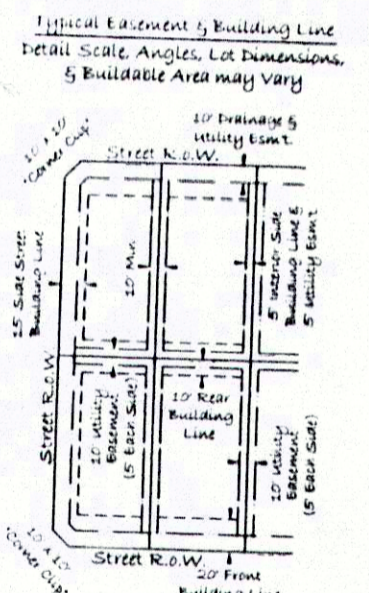
Minimum Finished Floor Elevations:

- Block A
 - Lot 10 = 834.00
 - Lot 11 = 834.00
 - Lot 13 = 834.00
 - Lot 39 = 842.00
 - Lot 40 = 840.00
 - Lot 41 = 838.00
 - Lot 42 = 838.00
 - Lot 44 = 835.00
 - Lot 45 = 834.75
 - Lot 53 = 834.50
- Block B
 - Lot 14 = 834.50
 - Lot 27 = 834.75
 - Lot 28 = 839.00
 - Lot 29 = 839.00
 - Lot 50 = 839.50
 - Lot 51 = 840.00
 - Lot 52 = 842.00
 - Lot 73 = 843.00
 - Lot 74 = 843.70

Minimum Finished Floor Elevations determined & provided by Barron, Stark, Swift Consulting Engineers, 6221 Southwest Blvd., Ste. 100, Fort Worth, Texas

Leavitt V. 718, P. 663

Leavitt V. 718, P. 663



Line	Bearing & Distance	Curve	Radius	Arc Length	Chord Bearing & Distance
L1	N 46°54'31" E 14.14	C1	1196.28	225.97	N 84°47'24" W 225.64
L2	N 87°09'47" W 24.38	C2	1196.28	14.54	N 79°01'49" W 14.54
L3	N 69°25'21" W 13.39	C3	200.00	48.50	N 76°22'09" W 48.37
L4	N 42°40'30" W 25.50	C4	400.00	24.84	S 86°18'41" E 24.84
L5	S 41°12'02" E 26.23	C5	500.00	28.01	S 87°08'15" E 28.01
L6	N 26°29'28" E 54.94	C6	500.00	26.51	S 89°15'42" E 26.51
L7	N 43°26'14" E 50.00	C7	15.00	13.62	S 64°46'14" E 13.16
L8	N 41°57'59" E 33.16	C8	50.00	46.16	S 69°12'26" E 44.54
L9	S 26°29'28" W 54.94	C9	50.00	34.08	N 68°49'04" E 33.43
L10	S 41°57'59" W 33.16	C10	50.00	38.53	N 29°12'43" E 37.59
L11	S 02°19'30" W 14.14	C11	50.00	43.44	N 19°45'07" W 44.22
L12	S 47°19'30" W 14.08	C12	50.00	43.66	N 69°40'45" W 42.29
L13	N 47°19'30" E 14.08	C13	15.00	13.62	N 68°11'07" W 13.16
L14	S 87°40'30" E 14.14	C14	15.00	13.62	N 16°39'54" W 13.16
L15	S 89°13'10" W 7.32	C15	50.00	4.14	N 06°58'21" E 4.14
L16	N 43°05'29" W 14.14	C16	50.00	99.44	N 29°27'16" W 56.00
L17	N 43°05'31" E 14.14	C17	50.00	45.80	N 89°45'07" W 44.22
L18	S 88°05'29" E 22.50	C18	50.00	114.53	S 01°36'50" E 91.08
L19	N 88°05'29" W 9.24	C20	50.00	23.97	S 80°57'51" E 23.74
L20	N 43°05'29" W 14.14	C21	15.00	13.62	S 68°11'07" E 13.16
L21	N 46°54'31" E 14.14	C22	50.00	65.00	S 70°04'58" W 60.52
L22	S 06°48'28" W 57.18	C23	50.00	46.00	S 69°52'07" W 38.94
L23	S 01°05'38" E 55.82	C24	50.00	51.80	S 42°40'30" E 49.51
L24	S 24°30'14" E 60.05	C25	50.00	40.00	N 84°34'01" E 38.94
L25	S 00°56'33" W 19.54	C26	50.00	65.00	N 24°34'02" E 60.52
L26	S 06°48'28" W 44.50	C27	30.00	69.06	S 23°16'20" W 54.79
L27	N 43°05'29" W 14.14	C28	450.00	49.07	N 87°59'12" W 49.05
L28	N 43°05'29" W 14.14	C29	450.00	27.95	N 86°18'41" W 27.95
L29	N 46°54'31" E 14.14	C30	15.00	13.62	S 62°04'53" E 13.16
L30	N 88°05'29" W 19.80	C31	50.00	36.62	S 57°03'07" E 35.81
L31	N 01°54'31" E 27.38	C32	50.00	43.08	N 77°16'58" E 41.76
L32	N 43°05'29" W 14.14	C33	50.00	44.24	N 29°15'21" W 42.44
L33	N 01°54'31" E 17.41	C34	50.00	39.53	N 20°44'23" W 38.51
L34	S 88°05'14" E 339.31	C35	50.00	34.96	N 63°50'11" W 34.25
L35	S 01°54'31" W 27.38	C36	50.00	49.46	S 68°13'16" W 47.46
L36	N 88°05'29" W 329.31	C37	15.00	13.62	S 69°53'55" W 13.16
L37	N 24°30'14" W 60.05	C38	15.00	13.62	S 62°04'53" E 13.16
L38	N 01°05'38" W 55.82	C39	50.00	5.97	S 39°29'38" E 5.97
L39	N 06°48'28" E 101.68	C40	50.00	63.31	S 79°11'33" E 59.17
		C41	50.00	35.00	N 44°28'41" E 34.29
		C42	50.00	43.83	N 00°41'25" W 42.44
		C43	50.00	43.83	N 50°51'21" W 42.44
		C44	50.00	55.92	S 71°55'36" W 53.05
		C45	15.00	13.62	S 65°53'55" W 13.16
		C46	15.00	13.62	S 62°04'53" E 13.16
		C47	50.00	66.15	S 73°58'28" E 61.43
		C48	50.00	43.55	N 43°10'12" E 42.19
		C49	50.00	42.40	N 06°04'42" W 41.15
		C50	50.00	45.42	N 56°24'02" W 43.88
		C51	50.00	50.34	S 68°43'51" W 48.24
		C52	15.00	13.62	S 69°53'55" W 13.16
		C53	5629.58	327.82	S 49°24'06" E 327.77
		C54	5629.58	144.51	S 47°47'58" E 144.50
		C55	5679.58	77.59	S 46°01'17" E 77.59
		C56	5679.58	60.07	S 45°28'37" E 60.07
		C57	5679.58	60.04	S 44°52'16" E 60.04
		C58	5679.58	60.02	S 44°15'56" E 60.02
		C59	5679.58	60.01	S 43°39'36" E 60.01
		C60	5679.58	60.00	S 43°03'17" E 60.00
		C61	5679.58	60.00	S 42°26'58" E 60.00
		C62	5679.58	60.01	S 41°50'39" E 60.01
		C63	5679.58	33.79	S 41°22'16" E 33.79

Surveyor:
Carter Surveying & Mapping, Inc.
208 S. Front Street
Aledo, Texas 76008
817-441-5263 (LAND)

Engineer:
Barron - Stark - Swift
Consulting Engineers
6221 Southwest Boulevard, Suite 100
Fort Worth, Texas 76132
817-231-8122

Developer:
Bearcat Development, LLC
P.O. Box 1296
Aledo, Texas 76008

F.M. Highway 1187
(F.K.A. F.M. Highway 2376)
(100' Right of Way)

Old Aledo-Bear Creek Road
(Per Texas D.O.T. - V. 403, Pgs. 503 & 508)
(Variable Width Right of Way)

Zambardo
V. 2142, P. 1823

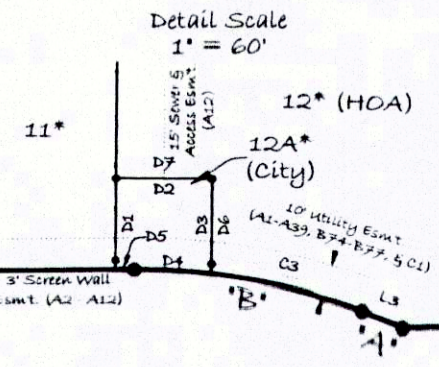
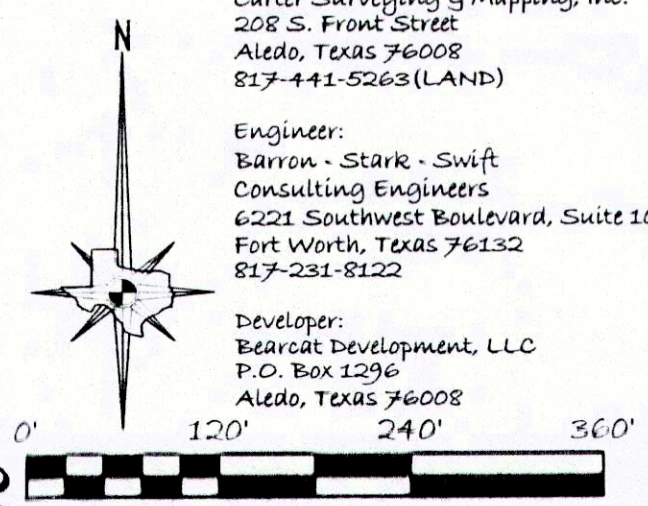
FINAL PLAT
BROOKHOLLOW
AN ADDITION TO THE CITY OF ALEDO,
PARKER COUNTY, TEXAS
LOTS 1-12, 12A, 13-53, BLOCK A; LOTS
1-77, BLOCK B; & LOT 1, BLOCK C
42.781 ACRES - 132 LOTS

Being a 42.781 acre subdivision out of the A.B. SMITH SURVEY,
ABSTRACT No. 1223, and the J.G. WARKEN SURVEY, ABSTRACT No.
2182, Parker County, Texas

February 2014

CARTER SURVEYING
& MAPPING

208 S. FRONT ST. - P.O. BOX 651 - ALEDO, TX 76008
(P) 817-441-LAND (5263) - (F) 817-441-1033



Detail Data Table

D1	N 00°39'40" E 30.00
D2	S 89°20'20" E 30.00
D3	S 00°39'40" W 30.99
D4	Arc 24.04 - Rad. 200.00
Ch.	N 86°45'30" W 24.02
D5	S 89°47'54" W 6.00
D6	N 00°39'40" E 30.99
D7	N 89°20'20" W 30.00

Line "A"
N 69°25'21" W 13.39'
Curve "B"
Radius - 200.00'
Arc - 72.53'
Ch - N 79°48'43" W 72.14'