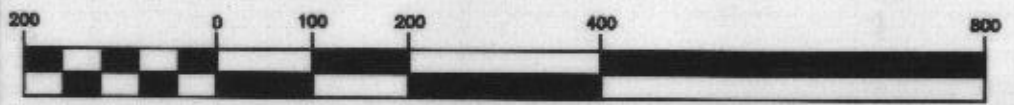




GRAPHIC SCALE

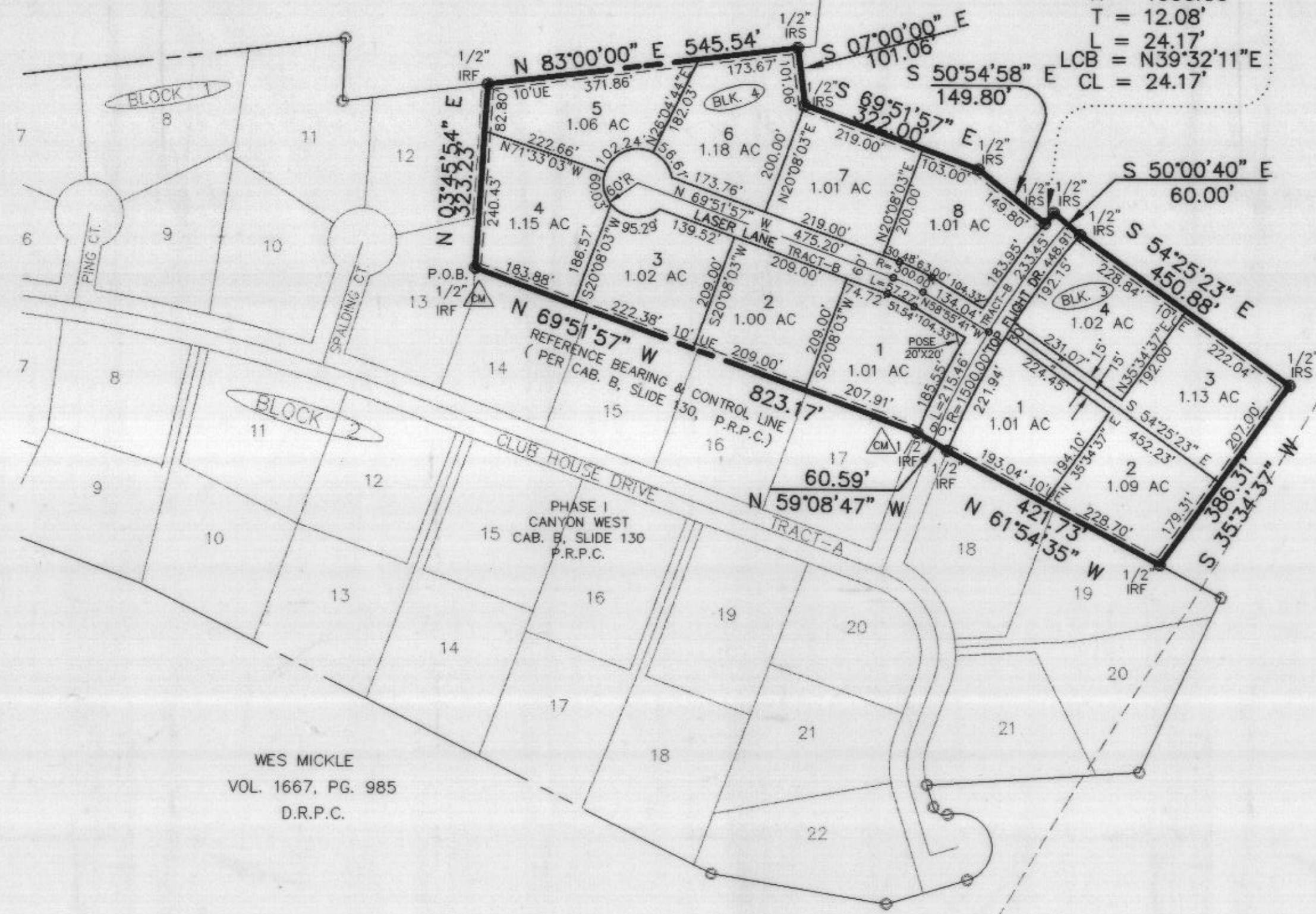
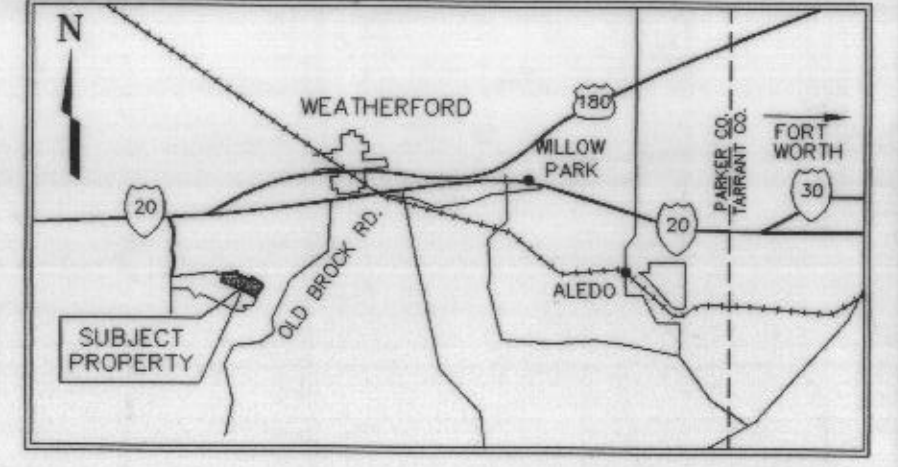


(IN FEET)
1 inch = 200 ft.

WILLIAM E. BRADBURY
VOL. 605, PG 557
D.R.P.C.

LARRY J. WOOD
VOL. 1217, PG 143
D.R.P.C.

LOCATION MAP



$\Delta = 00^{\circ}54'18''$
 $R = 1530.00'$
 $T = 12.08'$
 $L = 24.17'$
 $LCB = N39^{\circ}32'11''E$
 $CL = 24.17'$

WES MICKLE
VOL. 1667, PG. 985
D.R.P.C.

pc B 163
300618

RECEIVED AND FILED
FOR RECORD
3:45 O'clock P M

SEP 27 1996

Jeane Brunson, Co. Clerk
PARKER COUNTY, TEXAS
By *Vaneta Love* Deputy

STATE OF TEXAS COUNTY OF PARKER
I hereby certify that this instrument was filed
on the date and time stamped hereon by me and
was duly recorded in the volume and page of the
named records of Parker County as stamped here-
on by me.



RECORDED SEP 27 1996

Jeane Brunson
County Clerk, Parker County, Tex.

WES MICKLE
VOL. 1667, PG. 985
D.R.P.C.

FINAL PLAT
OF
PHASE II
CANYON WEST

LOTS 1 - 8, BLOCK 4
TRACT B, BLOCK 3
LOTS 1 - 4, BLOCK 3

A SUBDIVISION OF 15.98 ACRES OF LAND
IN THE CONRAD MACKELHOFF SURVEY ABST. - 916
PARKER COUNTY, TEXAS

JULY 29, 1996

GORDON S. SWIFT

CONSULTING ENGINEER, INC.

900 MONROE ST., FORT WORTH, TEXAS, 76102-6392
(817) 335-6464

page 1 of 2

E-1061 / 9425000 / PWD / 07-29-1996 / FPLAT-2