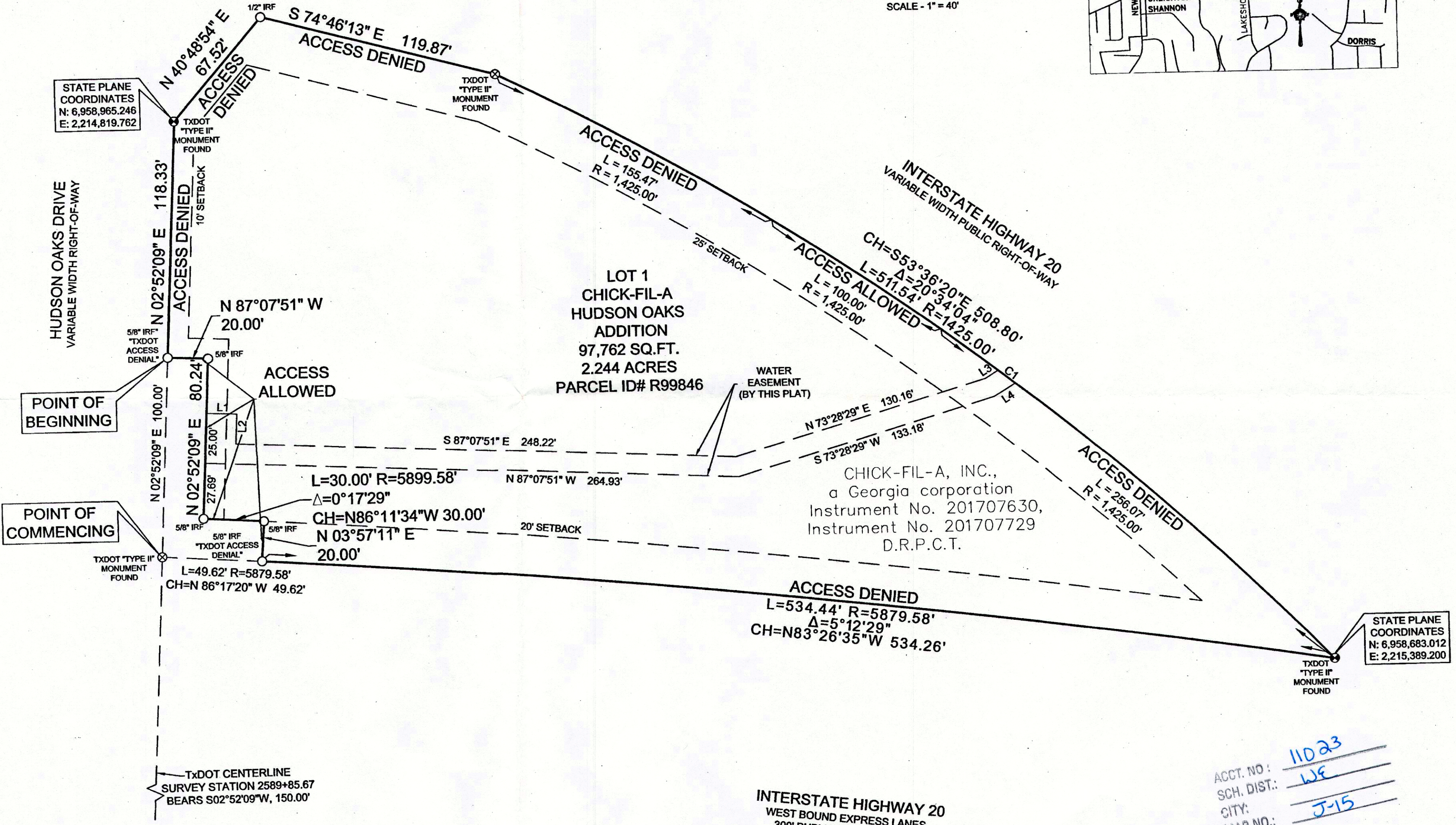


FORT WORTH HIGHWAY
U.S. HIGHWAY 180
VARIABLE WIDTH PUBLIC RIGHT-OF-WAY

LOT 1, BLOCK 1
DURANT CHEVROLET
ADDITION
VOLUME D, PAGE 75
M.R.P.C.T.

INTERSTATE HIGHWAY 20
(FRONTAGE ROAD)
300' PUBLIC RIGHT-OF-WAY



STATE PLANE
COORDINATES
N: 6,958,683.012
E: 2,215,389.200

ACCT. NO: 11023
SCH. DIST: WF
CITY: J-15
MAP NO:

WATER EASEMENT LINE TABLE

LINE #	LENGTH	DIRECTION
L1	15.00'	S87°07'51"E
L2	15.00'	S2°52'09"W
L3	7.47'	N58°28'29"E
L4	12.51'	S58°28'29"W

WATER EASEMENT CURVE TABLE

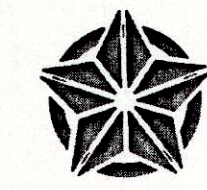
CURVE #	LENGTH	RADIUS	DELTA	CHORD
C1	10.67'	1425.00'	0°25'45"	S51° 59' 22"E 10.67'

LEGEND

- M.R.P.C.T. MAP RECORDS, PARKER COUNTY, TEXAS
- IRF ○ IRON ROD FOUND
- TXDOT "TYPE II" MONUMENT A 3" BRASS MONUMENT STAMPED
- TXDOT "Type II" on 5/8" IRF
- TXDOT ACCESS DENIAL MONUMENT 2" ALUMINUM DISK STAMPED "ACCESS DENIAL"

D-762

OWNER
CHICK-FIL-A, INC.,
a Georgia corporation
5200 Buffington Road
Atlanta, Georgia 30349
attn: Getra Thomason-Sanders
phone: 404-765-8000
email: getra.sanders@cfacorp.com



20440.014.000-00
TEXAS HERITAGE
SURVEYING, LLC
10610 Metric Drive, Suite 124, Dallas, TX 75243
Office 214-340-9700 Fax 214-340-9710
txheritage.com
Firm #10169300

FINAL PLAT
LOT 1
CHICK-FIL-A
HUDSON OAKS ADDITION
DAVID EDDLEMAN SURVEY,
ABSTRACT NO. 440
THE CITY OF HUDSON OAKS,
PARKER COUNTY, TEXAS
PREPARED NOVEMBER 30, 2016