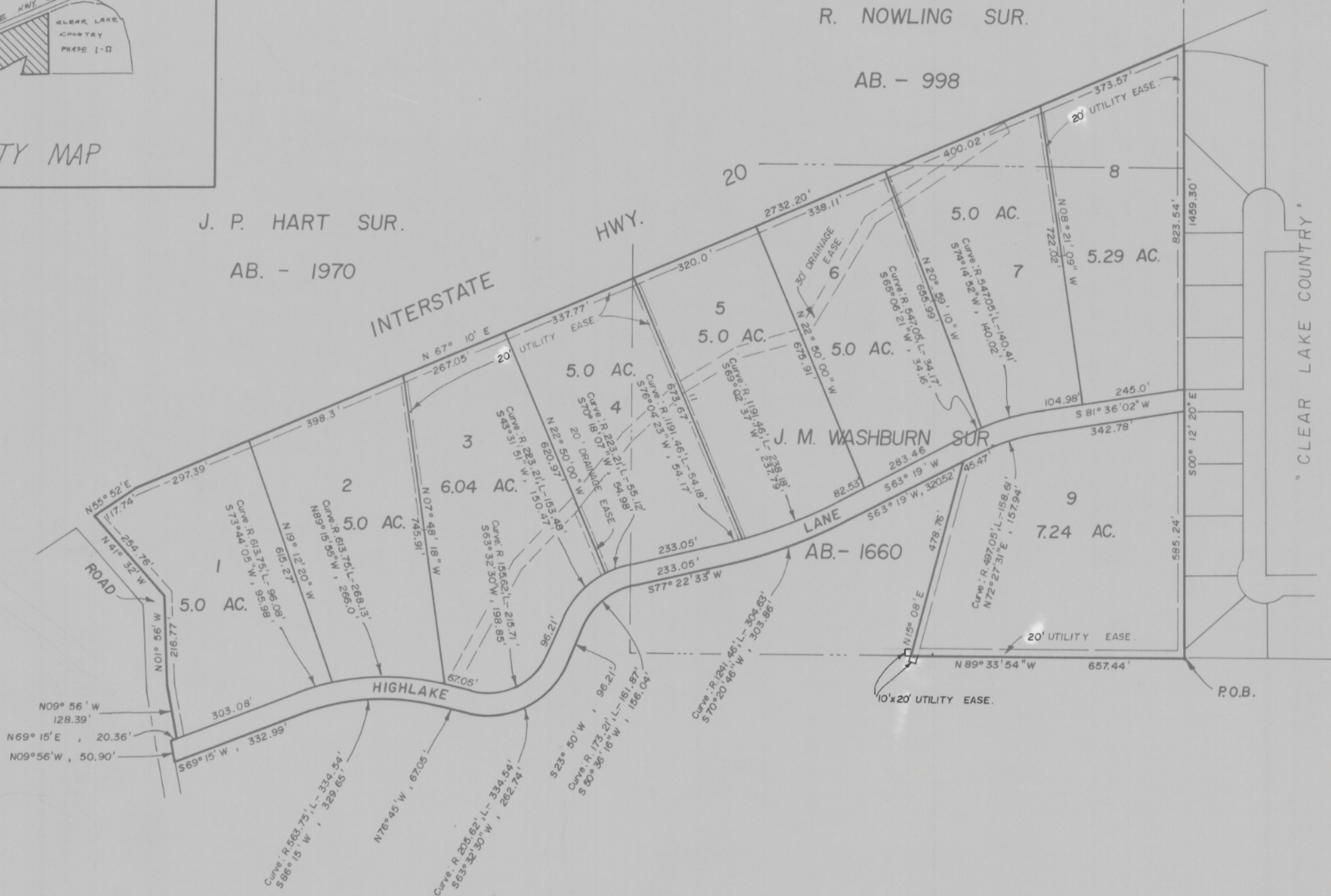


VICINITY MAP

J. P. HART SUR.
AB. - 1970

R. NOWLING SUR.

AB. - 998



G-36

CLEAR LAKE COUNTRY

PHASE III

AN ADDITION TO THE CITY OF WEATHERFORD
BEING A PART OF THE J. P. HART SUR. AB.-
1970, THE J. M. WASHBURN SUR. AB.- 1660
AND THE R. NOWLING SUR. AB. - 998.
PARKER COUNTY, TEXAS

SCALE 1" = 200'

HUGHES AND ASSOCIATES
LAND SURVEYING
CIVIL ENGINEERING
LAND PLANNING

111 E. COLUMBIA, SUITE E WEATHERFORD, TEXAS
OFFICE 594-5274 OR 441-7619 HOME 594-2165



I, *Tommie Hughes, Jr.* certify that this map was prepared from field notes of an actual survey made by me or under my supervision and to the best of my knowledge and belief represents said survey.

G-36

Date 3/85 No. 12,262