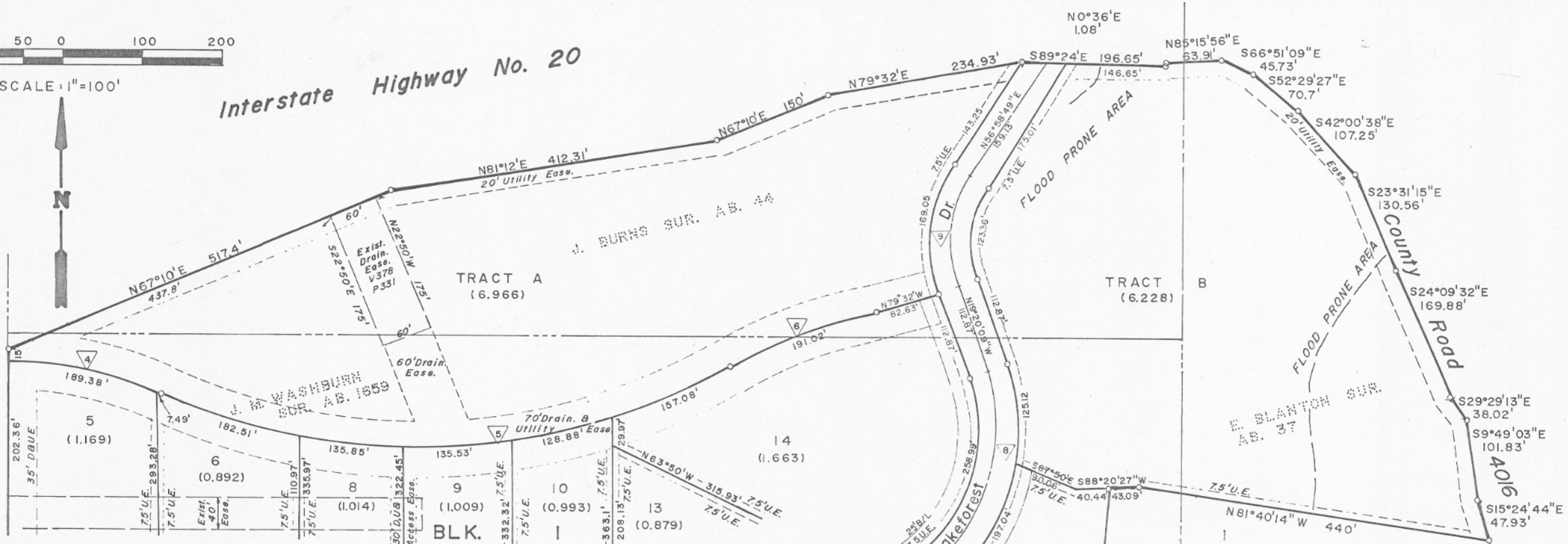


100 50 0 100 200

SCALE: 1"=100'

Interstate Highway No. 20

R. HOWLING SUR. AB. 988



STATE OF TEXAS | COUNTY OF PARKER |

WHEREAS, I, HANK GREMMINGER, as the owner of a tract of land out of the J.M. Washburn Survey, Abstract No. 1659, the E. Blanton Survey, Abstract No. 37, and the J. Burns Survey, Abstract No. 44 situated in Parker County, Texas, and being more particularly described by metes and bounds as follows:

BEGINNING at the southwest corner of the J.M. Washburn Survey, Abstract No. 1659,

THENCE N 00°02' 57" W, with the west line of said J.M. Washburn Survey, a distance of 1460.00 feet to a point for corner to the south right-of-way line of Interstate Highway Number 20;

THENCE with the said south right-of-way line of Interstate Highway Number 20 the following calls: 1. 67° 10' 00" E a distance of 517.40 feet; 2. 01° 21' 00" E a distance of 412.31 feet; 3. 02° 10' 00" E a distance of 50.00 feet; 4. 79° 12' 00" E a distance of 234.07 feet; 5. 40° 24' 00" E a distance of 171.48 feet; 6. 100° 38' 00" E a distance of 1.00 feet; and 7. 55° 18' 58" E a distance of 43.91 feet to an angle point in the west right-of-way line of County Road 4016;

THENCE with the said west right-of-way line of County Road 4016 the following calls: 1. 64° 51' 00" E a distance of 48.77 feet; 2. 52° 29' 22" E a distance of 70.70 feet; 3. 42° 00' 58" E a distance of 102.28 feet; 4. 23° 31' 15" E a distance of 130.56 feet; 5. 24° 09' 32" E a distance of 107.25 feet; 6. 29° 13' 13" E a distance of 30.00 feet; 7. 49° 03' E a distance of 371.81 feet; and 8. 15° 24' 44" E a distance of 47.93 feet to a point for corner, said point being the northeast corner of the Clear Lake Country Subdivision;

THENCE with the north and west lines of the said Clear Lake Country Subdivision the following calls: 1. 51° 40' 14" W a distance of 440.00 feet; 2. 8° 38' 20' 22" E a distance of 43.00 feet; 3. 4° 29' 55" W a distance of 300.00 feet; 4. 7° 29' 58" W a distance of 314.74 feet; 5. 8° 18' 45" W a distance of 224.00 feet; 6. 14° 22' 40" E a distance of 128.88 feet; 7. 13° 57' 10" S a distance of 30.00 feet; and 8. 0° 24' 35" W a distance of 316.00 feet to a point for a corner to the south line of said J.M. Washburn Survey, and said point being the southwest corner of the said Clear Lake Country Subdivision;

THENCE N 89° 46' 42" W, with the south line of said J.M. Washburn Survey, a distance of 1293.21 feet to the PLACE OF BEGINNING and containing 55.766 acres of land more or less.

NOW, THEREFORE KNOW ALL MEN BY THESE PRESENTS: THAT, I, HANK GREMMINGER, do hereby adopt this plat as Lots 1 through 14, Block 1, Lots 1 through 22, Block 2, Lots 1 through 22, Block 3, and Tracts A & B, CLEAR LAKE COUNTRY, 2nd INCREMENT, an addition to the City of Weatherford, Parker County, Texas, and to the County of Parker, Texas, and do hereby dedicate to the public the streets and easements shown herein.

Hank Gremminger

SURVEYOR'S CERTIFICATE: I, ROBERT LEE SCOTT, Registered Public Surveyor No. 2640, State of Texas, do hereby certify that the plat shown is a true and correct copy of a 74.700 acre tract made up of maps and associates, and that all lot corners are properly marked on the ground, and this plat correctly represents the survey.

STATE OF TEXAS | COUNTY OF PARKER |

Before me, the undersigned authority, a Notary Public in and for said county and state, on this day personally appeared Hank Gremminger known to me to be the person(s) whose name(s) are subscribed to the foregoing instrument and acknowledged to me that the same was the act of said person(s) for the purposes and considerations therein expressed and in the capacity therein stated.

Given under my hand and seal of office this _____ day of _____

NOTARY PUBLIC IN AND FOR PARKER COUNTY

APPROVED: City of Weatherford Planning Board

APPROVED: City Commission of City of Weatherford, Parker County, Texas

Mayor: [Signatures]

CERTIFICATE FOR APPROVAL

APPROVED FOR RECORDATION, this the 23 day of July, 1984 by the Commissioner's Court of Parker County, Texas.

[Signatures of Commissioners]

Adopted by the Commissioner's Court of Parker County, Texas, this 23 day of July, 1984.

ATTEST: [Signatures]

STATE OF TEXAS | COUNTY OF PARKER | I hereby certify that this instrument was filed on the date and time stamped hereon by me and was duly recorded in the volume and page of the named records of Parker County as stamped hereon by me.

RECORDED JUL 23 1984 [Seal]

Final Plat CLEAR LAKE COUNTRY 2nd INCREMENT

55.766 ACRES IN THE J. M. WASHBURN SURVEY ABS. NO. 1659, J. BURNS SURVEY ABS. NO. 44 AND THE E. BLANTON SURVEY ABS. NO. 37 PARKER COUNTY, TEXAS

MAY, 1984 OWNER: HANK GREMMINGER

PAGE 2 OF 2

VESELKA ENGINEERING CONSULTANTS, INC.

CIVIL MUNICIPAL HYDROLOGY PLANNING 325 S. MESQUITE ST. ARLINGTON, TEXAS 76010 METRO (817) 469-1671