

AWAY FIRST ADDITION

E. DAVIS SURVEY
Abst. 393

Curve Data
 Δ 20° 54' Δ 20° 54'
 D 4° 24' D 4° 14'
 T 240.50 T 250.13
 L 475.65 L 493.
 R 1303.97 R 1353.97

Curve Data
 Δ 31° 16' Δ 31° 16'
 D 30° 00' D 23° 44'
 T 54.06 T
 L 105.43 L
 R 193.18 R 243.18

S.B.L. R.E. DAVIS SURVEY
N.B.L. P.F. BRANNON SURVEY

P.F. BRANNON SURVEY
Abst. 207

Curve Data
 Δ 5° 52' Δ 5° 52'
 D 1° 24' D 1° 25'
 T 208.90' T 206.33
 L 417.44' L 412.32
 R 4076.81 R 4026.81

Curve Data
 Δ 35° 20' Δ 35° 20'
 D 12° 02' D 13° 29'
 T 151.57 T
 L 293.47 L
 R 475.88 R 425.88

Curve Data
 Δ 26° 00' Δ 26° 00'
 D 11° 34' D 10° 30'
 T 114.00 T
 L 224.14 L
 R 496.42 R 546.42

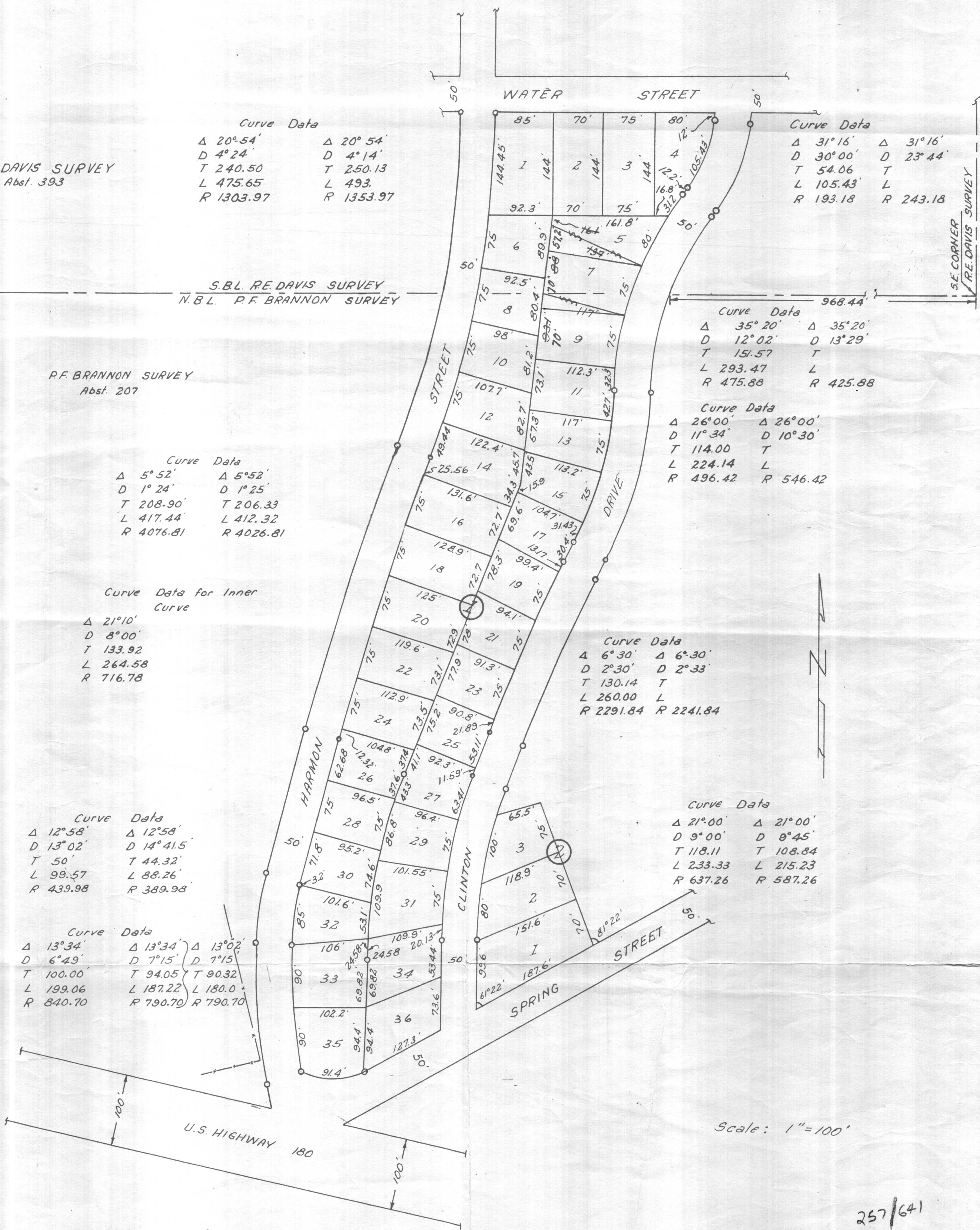
Curve Data for Inner Curve
 Δ 21° 10'
 D 8° 00'
 T 133.92
 L 264.58
 R 716.78

Curve Data
 Δ 6° 30' Δ 6° 30'
 D 2° 30' D 2° 33'
 T 130.14 T
 L 260.00 L
 R 2291.84 R 2241.84

Curve Data
 Δ 12° 58' Δ 12° 58'
 D 13° 02' D 14° 41.5'
 T 50' T 44.32'
 L 99.57 L 88.26'
 R 439.98 R 389.98

Curve Data
 Δ 21° 00' Δ 21° 00'
 D 9° 00' D 9° 45'
 T 118.11 T 108.84
 L 233.33 L 215.23
 R 637.26 R 587.26

Curve Data
 Δ 13° 34' Δ 13° 34' Δ 13° 02'
 D 6° 49' D 7° 15' D 7° 15'
 T 100.00 T 94.05 T 90.32
 L 199.06 L 187.22 L 180.0
 R 840.70 R 790.70 R 790.70



Scale: 1" = 100'

257/641

May 25, 1953

I certify that the survey was made on the ground and this map is a true representation of the survey.

L.C. McCanlies
 L.C. McCanlies, County Engineer - Surveyor
 of Parker County, Texas

RECEIVED and FILED
 FOR RECORD
 At 2:00 O'clock P.M.

JUN 5 - 1953

W. P. ASHCROFT, County Clerk
 Parker County, Texas

and recorded June 15, 1953
 at 9 o'clock A.M.